

4

3

2

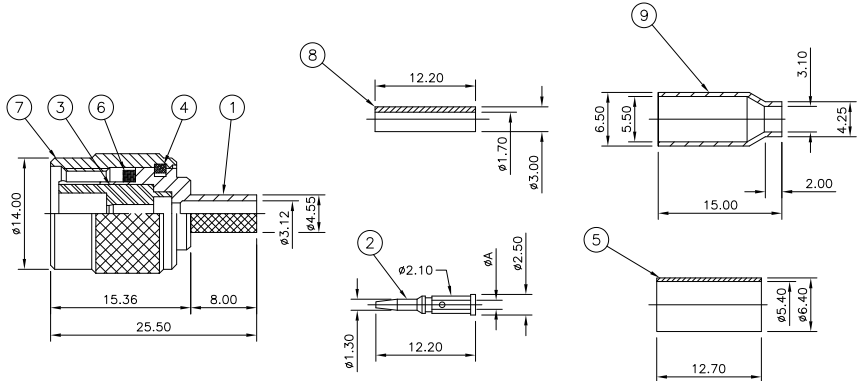
1

THIS DRAWING IS UNPUBLISHED. RELEASED FOR PUBLICATION SEPTEMBER, 2008.
 © COPYRIGHT 2006 BY TYCO ELECTRONICS CORPORATION. ALL RIGHTS RESERVED.

LOC	DIST	REV	DESCRIPTION	DATE	BY	APP'D
E	B	B	ECO-09-003420	11 Mar 09	RITA	BOB

QTY	REV	DESCRIPTION	DATE	BY	APP'D
1.1	9-1478242-0	RG58C/U, 141A/U, 303/U, URM43, 76, BELDEN 9907, KX15			5-1814800-3
1.1	9-1478242-0	RG58C/U, 141A/U, 303/U, URM43, 76, BELDEN 9907, KX15			5-1814800-2
0.57	9-1478242-0	RG174A/U, 188A/U, 316/U, URM95, KX3B, KX2A			5-1814800-1
0.57	9-1478242-0	RG174A/U, 188A/U, 316/U, URM95, KX3B, KX2A			5-1814800-0

- NOTES
- ▲ SINGLE PACK IN ACCORDANCE WITH AMP SPEC 107-3275
 - ▲ 100 TRAY PACK IN ACCORDANCE WITH AMP SPEC 107-3275
 - ▲ Au PLATING
 - ▲ Ni PLATING
 - ▲ THIS ITEM MUST BE WHITE
 - 6 HAND TOOL: 9-1478240-0
 - 7 DIE SET: SEE TABLE
 - 8 FOR TECHNICAL DATA REFER TO YOUR LOCAL TYCO ELECTRONICS SALES OFFICE
 - 9 ALL DIMENSIONS ARE NOMINAL FOR REFERENCE ONLY UNLESS OTHERWISE STATED



QTY	REV	DESCRIPTION	DATE	BY	APP'D
1	1	BRASS			▲ FERRULE 9
1	1	NYLON			▲ FISHER SLEEVE 8
1	1	ZINC ALLOY			▲ COUPLING NUT 7
1	1	SILICON RUBBER			▲ GASKET 6
1	1	BRASS			▲ FERRULE 5
1	1	BRASS			▲ CIRCLIP 4
1	1	POLYMETHYLENE			▲ INSULATOR 3
1	1	BRASS			▲ CONTACT 2
1	1	ZINC ALLOY			▲ BODY 1

THIS DRAWING IS A CONTROLLED DOCUMENT.

DIMENSIONS: MM
 TOLERANCES UNLESS OTHERWISE SPECIFIED:
 0 PL ±0.15
 1 PL ±0.25
 2 PL ±0.30
 3 PL ±0.40
 4 PL ±0.50
 ANGLES ±0.5°

MATERIAL: SEE TABLE
 FINISH: SEE TABLE

DRAWN: RITA ZUO 11 Mar 09
 CHK: ANSON MA 11 Mar 09
 APD: BOB ZHAO 11 Mar 09
 PRODUCT SPEC: 108-112000
 APPLICATION SPEC: SEE SHEET 2
 WEIGHT: -

NAME: TNC STRAIGHT PLUG HEX CRIMP 50 OHM
 SIZE: A2
 CASE CODE: 00779
 DRAWING NO: C=1814800
 RESTRICTED TO: -

CUSTOMER DRAWING
 SCALE: NTS
 SHEET: 1 OF 2
 REV: B

4

3

2

1

THIS DRAWING IS UNPUBLISHED. RELEASED FOR PUBLICATION SEPTEMBER, 2008.
 © COPYRIGHT 2006 BY TYCO ELECTRONICS CORPORATION. ALL RIGHTS RESERVED.

LOC	DIST	REV	DESCRIPTION	DATE	BY	APPD
E	B	F	LNK			
		-	SEE SHEET 1			

COMPONENTS

ITEM	DESCRIPTION	QUANTITY	UNIT
	MAIN BODY (ITEM 1,3,4,6,7 & 8)		
	CENTRE CONTACT (ITEM 2)		
	PUSHER SLEEVE (ITEM 9)		
	CRIMP FERRULES (ITEM 5 & 10)		

ASSEMBLY INSTRUCTION

STEP	DESCRIPTION	DIAGRAMS
STEP 1	1. SLIDE METAL CRIMP FERRULE OVER CABLE	
STEP 2	1. STRIP CABLE TO DIMENSIONS AS SHOWN	
STEP 3	1. FIT CONTACT OVER CENTRE CONDUCTOR TO BUTT AGAINST DIELECTRIC. 2. CRIMP USING TOOL AS NOTES ON PAGE 1.	 RECOMMENDED CENTRE CONTACT A/F HEX
STEP 4	1. PRESS SUB-ASSEMBLY INTO BODY, UNTIL CONTACT IS FULLY LOCATED BY AN AUDIBLE CLICK. 2. ENSURE THAT KNURLED HOUSING INSERTS BETWEEN THE DIELECTRIC AND CABLE BRAID.	
STEP 5	1. SLIDE CRIMP FERRULE ALONG THE CABLE UNTIL IT BUTTS AGAINST THE HOUSING BODY. 2. CRIMP USING TOOL AS NOTED ON PAGE 1. 3. CRIMP DIMENSION AS SHOWN.	 RECOMMENDED CRIMP SLEEVE A/F HEX

THIS DRAWING IS A CONTROLLED DOCUMENT.		DRN: RITA ZUO 11 Mar 09	Tyco Electronics Corporation	
DIMENSIONS: MM		CHK: ANSON MA 11 Mar 09	Kunshan, Jiangsu, PRC 215312	
TOLERANCES UNLESS OTHERWISE SPECIFIED		APPD: BOB ZHAO 11 Mar 09	NAME	
0. PLC ±0.15		PRODUCT SPEC: 108-112000		
1. PLC ±0.10		APPLICATION SPEC: SHEET 2		
2. PLC ±0.05		SIZE: A2		
3. PLC ±0.02		CASE CODE: 00779		
4. RADIUS ±0.02		DRAWING NO: 1814800		
ANGLES ±0.5		CUSTOMER DRAWING		
FINISH		SCALE: NTS		
MATERIAL: SEE TABLE		SHEET 2 OF 2		
FINISH: SEE TABLE		REV B		

AMP 1471-9 REV 31MM2000

1814800

A