

4

3

2

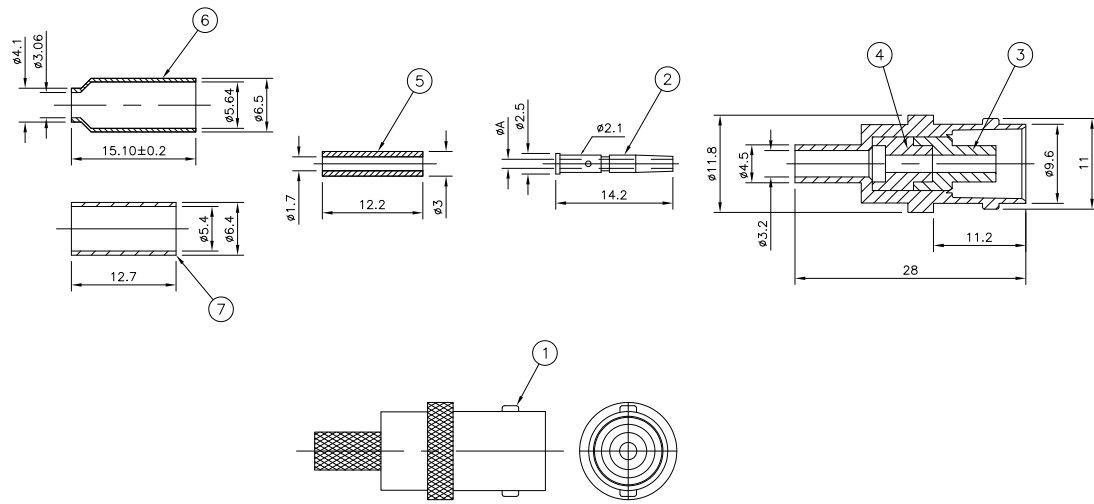
1

THIS DRAWING IS UNPUBLISHED. RELEASED FOR PUBLICATION JUNE 2004.  
 © COPYRIGHT 2004 BY TYCO ELECTRONICS CORPORATION. ALL RIGHTS RESERVED.

- NOTES
- 1. IP PACK: 1PC/ONE BAG, 100PCS/INNER BOX, 1000PCS/OUTER BOX
  - 2. BULK PACK: 100PCS/ONE BAG, 100PCS/INNER BOX, 1000PCS/OUTER BOX
  - 3. Ni PLATING OVER Ni PLATING OVER Cu PLATING
  - 4. Ni PLATING OVER Cu PLATING
  - 5. HAND TOOL: 9-1478240-0
  - 6. DIE SET: SEE TABLE
  - 7. FOR TECHNICAL DATA REFER TO YOUR LOCAL TYCO ELECTRONICS SALES OFFICE
  - 8. ALL DIMENSIONS ARE NOMINAL FOR REFERENCE ONLY UNLESS OTHERWISE STATED

LOC	DIST	REV	DESCRIPTION	DATE	BY	APP
E	B	F	C1	ECO-09-023525	20 OCT 09	RITA BOB

QTY	PLC	DESCRIPTION	DATE	BY	APP
1.1	9-1478242-0	RG58C/U, 141A/U, URM43, 76, BELDEN 9907, KX 15			5-1634511-3
1.1	9-1478242-0	RG58C/U, 141A/U, URM43, 76, BELDEN 9907, KX 15			5-1634511-2
0.57	9-1478242-0	RG174A/U, 188A/U, 316/U, URM95, KX 3B, KX 22A			5-1634511-1
0.57	9-1478242-0	RG174A/U, 188A/U, 316/U, URM95, KX 3B, KX 22A			5-1634511-0
DIMENSIONS			DIE SET		CABLE GROUPS
					PART NO.



QTY	PLC	DESCRIPTION	DATE	BY	APP
1	1	BRASS			7
1	1	BRASS			6
1	1	NYLON			5
1	1	POLYMETHYLENE			4
1	1	POLYMETHYLENE			3
1	1	PHOSPHOR BRONZE			2
1	1	ZINC ALLOY			1
MATERIAL			DESCRIPTION ITEM		

THIS DRAWING IS A CONTROLLED DOCUMENT.

DRW: RITA ZUO 24 Feb 09  
 CHK: ANSON MA 24 Feb 09  
 APD: BOB ZHAO 24 Feb 09

TYCO Electronics  
 Kunshan, Jiangsu, PRC 215312

PRODUCT SPEC: 108-112000  
 APPLICATION SPEC: SEE SHEET 2  
 WEIGHT: -

SIZE: A2  
 QTY: 00779  
 C=1634511

RESTRICTED TO: -

CUSTOMER DRAWING SCALE: NTS SHEET 1 OF 2 REV: C1

4

3

2

1

THIS DRAWING IS UNPUBLISHED. RELEASED FOR PUBLICATION JUNE 2004.  
 © COPYRIGHT 2004 BY TYCO ELECTRONICS CORPORATION. ALL RIGHTS RESERVED.

LOC	DIST	REV	DESCRIPTION	DATE	BY	APPD
E	B	F	SEE SHEET 1	-	-	-

COMPONENTS

ITEM NO.	DESCRIPTION	QUANTITY	UNIT
	MAIN BODY (ITEM 1,3, & 4)		
	CONTACT (ITEM 2)		
	PUSHER SLEEVE (ITEM 5)		
	CRIMP FERRULES (ITEM 6 & 7)		

ASSEMBLY INSTRUCTION

CABLES: RS58C/U, 141A/U, URM43, 76, BELDEN 9907, KX 15

CABLES: RG174A/U, 188A/U, 316/U, URM95, KX 3B, KX 22A

**STEP 1**  
1. SLIDE METAL CRIMP FERRULE OVER CABLE

**STEP 1**  
1. SLIDE METAL CRIMP FERRULE OVER CABLE

**STEP 2**  
1. STRIP CABLE TO DIMENSIONS AS SHOWN

**STEP 2**  
1. STRIP CABLE TO DIMENSIONS AS SHOWN

**STEP 3**  
1. FIT CONTACT OVER CENTRE CONDUCTOR TO BUTT AGAINST DIELECTRIC.  
2. CRIMP USING TOOL AS NOTES ON PAGE 1.

RECOMMENDED CENTRE CONTACT A/F HEX 1.75

**STEP 3**  
1. SLIDE ITEM 10 PUSHER SLEEVE OVER DIELECTRIC BEFORE FITTING THE CONTACT.  
2. FIT CONTACT OVER CENTRE CONDUCTOR TO BUTT AGAINST DIELECTRIC.  
3. CRIMP USING TOOL AS NOTES ON PAGE 1.

RECOMMENDED CENTRE CONTACT A/F HEX 1.75

**STEP 4**  
1. PRESS SUB-ASSEMBLY INTO BODY, UNTIL CONTACT IS FULLY LOCATED BY AN AUDIBLE CLICK.  
2. ENSURE THAT KNURLED HOUSING INSERTS BETWEEN THE DIELECTRIC AND CABLE BRAID.

HOUSING END UNDER BRAID

**STEP 4**  
1. PRESS SUB-ASSEMBLY INTO BODY, UNTIL CONTACT IS FULLY LOCATED BY AN AUDIBLE CLICK.  
2. ENSURE THAT KNURLED HOUSING INSERTS BETWEEN THE PUSHER SLEEVE AND CABLE BRAID.

HOUSING END UNDER BRAID

**STEP 5**  
1. SLIDE CRIMP FERRULE ALONG THE CABLE UNTIL IT BUTTS AGAINST THE HOUSING BODY.  
2. CRIMP USING TOOL AS NOTED ON PAGE 1.  
3. CRIMP DIMENSION AS SHOWN.

RECOMMENDED CRIMP SLEEVE A/F HEX 5.80

**STEP 5**  
1. SLIDE CRIMP FERRULE ALONG THE CABLE UNTIL IT BUTTS AGAINST THE BODY HOUSING.  
2. CRIMP USING TOOL AS NOTED ON PAGE 1.  
3. CRIMP DIMENSION AS SHOWN.

RECOMMENDED CRIMP SLEEVE A/F HEX 5.60

THIS DRAWING IS A CONTROLLED DOCUMENT.		DRN RITA ZUO 24 Feb 09	Tyco Electronics Corporation Kunshan, Jiangsu, PRC 215312
		CHK ANSON MA 24 Feb 09	
		APPD BOB ZHAO 24 Feb 09	
DIMENSIONS: MM		PRODUCT SPEC: 108-112000	NAME: BNC STRAIGHT JACK CRIMP
TOLERANCES UNLESS OTHERWISE SPECIFIED:		APPLICATION SPEC: SHEET 2	50 OHM
0 PLC ± 0.5		SIZE: A2	00779
1 PLC ± 0.3		DRAWING NO: 1634511	RESTRICTED TO: -
2 PLC ± 0.2		SCALE: NTS	SHEET 2 OF 2
3 PLC ± -		CUSTOMER DRAWING	REV C1
4 PLC ± -			
ANGLES ± -			
FINISH: SEE TABLE			

1634511

A