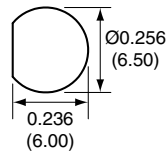
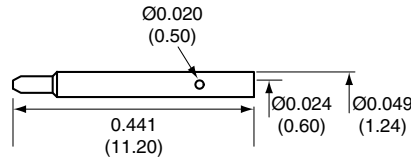


1		
Description	Material	Finish
Body	Brass	Nickel
Pin	Brass	Gold
Insulation	Teflon	Teflon
O Ring	Si Rubber	Rubber
Crimp Ring	Brass	Nickel
Washer	Brass	Nickel
Nut	Brass	Nickel

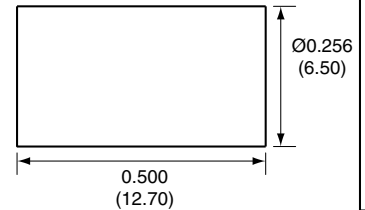
RECOMMENDED MOUNTING HOLE



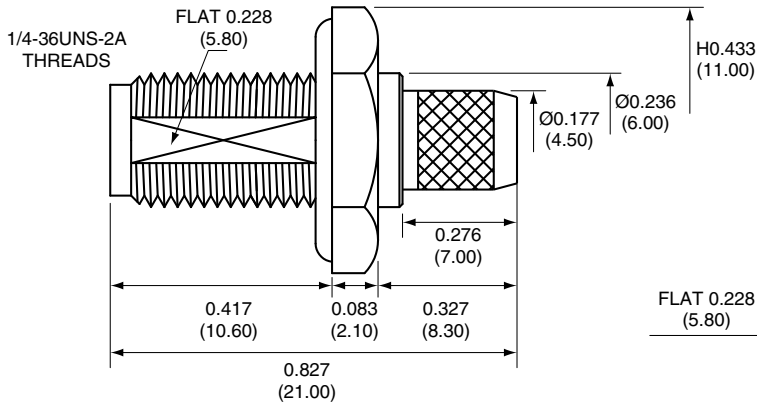
PIN



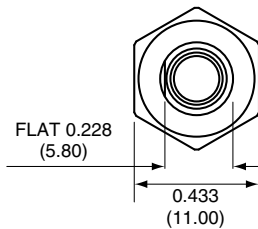
CRIMP RING



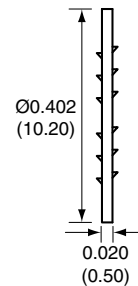
SIDE VIEW



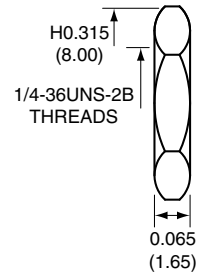
BACK VIEW



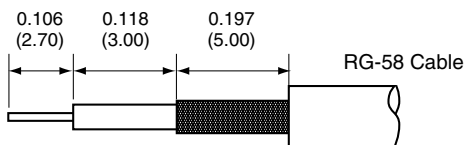
WASHER



NUT



RECOMMENDED CABLE STRIPPING DIMENSIONS



CONREVSMA014-R58 ASSEMBLY INSTRUCTIONS

1. Solder the pin to the center conductor.
2. Insert the pin, center conductor, and insulation into the body.
3. Wrap the braid around the tail of the body and crimp the ring with a hex crimp tool.

Title RP-SMA FEMALE BULKHEAD MOUNT CABLE END CRIMP WITH O-RING FOR RG58 CABLE		CONNECTOR CITY 159 ORT LANE MERLIN, OR 97532	
Part No. CONREVSMA014-R58	Revision: 1.0	PH (541)-471-6256 FAX (541)-471-6251	
Dimensions: INCHES (mm)	Date: 1/19/2007	Sheet 1 of 1	

CONNECTOR CITY
THE VALUE OF CONNECTIONS

1

2

3

4