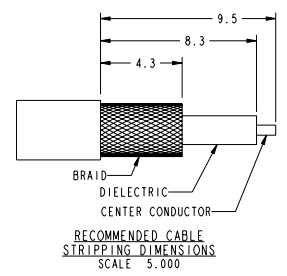
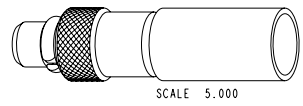


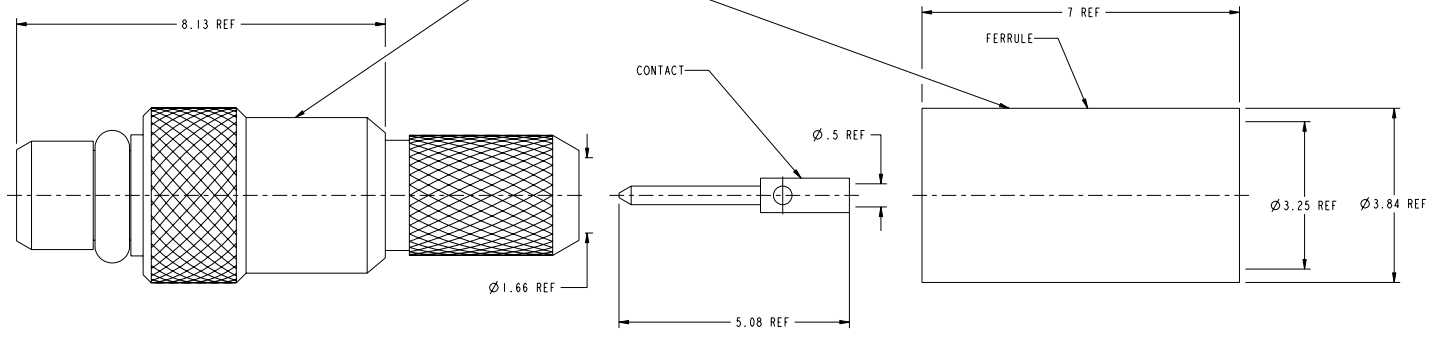
NOTES:

- MATERIALS AND FINISHES:
 BODY COMPONENTS - BeCu, WHITE BRONZE (Cu, Sn, Zn) PLATING
 CONTACT AND C-RING - BeCu, GOLD PLATING OVER WHITE BRONZE (Cu, Sn, Zn)
 FERRULE - COPPER TUBING, WHITE BRONZE (Cu, Sn, Zn) PLATING
 INSULATOR - PTFE
- ELECTRICAL:
 A. IMPEDANCE: 50 OHM
 B. FREQUENCY RANGE: DC - 6 GHz
 C. VSWR (RETURN LOSS): 1.20:1 (21 dB), MAX.
 D. DIELECTRIC WITHSTANDING VOLTAGE: 500 VRMS, MIN.
- MECHANICAL:
 A. DURABILITY: 500 CYCLES, MIN.
 B. TEMPERATURE RANGE: -65° C TO 165° C
 C. SOLDER CONTACT
 D. CRIMP FERRULE WITH .128 INCH HEX
- PACKAGING:
 A. QUANTITY: BULK PACK 100 PER
 B. MARKING: BAG TO BE MARKED
 "AMPHENOL, 908-NM41300, DATE CODE, AND NON MAGNETIC"

908-NM41300		REVISIONS			
PART NO.	REV	DESCRIPTION	DATE	ECO	APPR
THIRD ANGLE PROJ.	A	RELEASE TO MFG.	8/8/06	46108	KJC
	B	SEE SHEET 2.	10/24/06	46304	KJC



THESE SURFACES MARKED "NM"
TO SIGNIFY NON MAGNETIC PARTS



CUSTOMER OUTLINE DRAWING
ALL OTHER SHEETS ARE FOR INTERNAL USE ONLY

METRIC DRAWING

UNLESS OTHERWISE SPECIFIED, DIMENSIONS ARE METRIC AND TOLERANCES ARE: 1 PLACE DECIMAL ± 0.3MM (0.012") 2 PLACE DECIMAL ± .10 MM (0.004") ANGLES ± 1° NOTICE: These drawings, specifications, or other data (1) are, and remain the property of Amphenol Corp., (2) must be returned upon request; and (3) are confidential and not to be disclosed to any person other than those to whom they are given by Amphenol Corp. The furnishing of these drawings, specifications, or other data by Amphenol Corp., or to any other person in any manner, licensing, granting rights to permitting such holder or any other person to manufacture, use or sell any product, process or design, patented or otherwise, that may in any way be related to or disclosed by said drawings, specifications, or other data.	MATERIAL	DRAWN K. CAPOZZI	DATE 18-Jul-06	TITLE ASSEMBLY MMCX, PLUG STR RG-316 NON MAGNETIC			Amphenol RF Danbury CT USA, Taiwan, Taiwan, Shenzhen, China www.amphenolrf.com
	REFERENCE EAR # 1952 AND	ENGINEER K. CAPOZZI	DATE 18-Jul-06				
	CONFIGURATION LEVEL: Engineering Change	APPROVED B. C. GLEISSNER	DATE 8/8/06	SCALE: 12.0:1.0	SHEET 2 OF 2	ITEM NO.	
	FINISH	CAD FILE Root Folder/MMCX/908-NM41300	SCALE: 12.0:1.0	DWG SIZE B	CODE ID 74868	REV B	PART NO. 908-NM41300