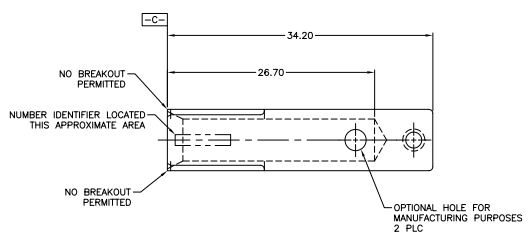
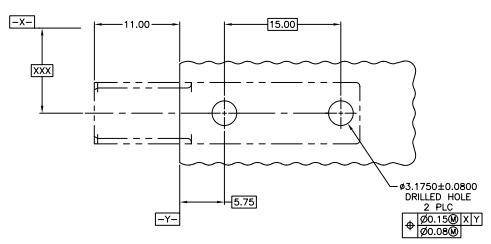
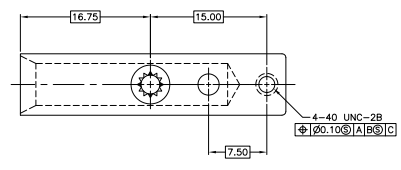
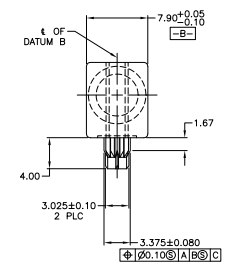
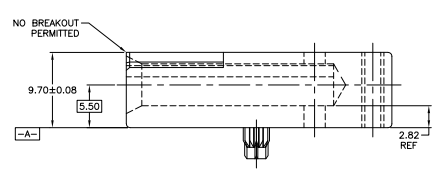
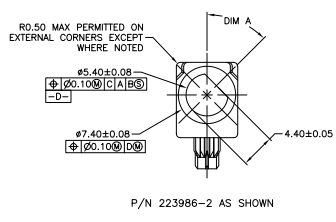


REV	DATE	DESCRIPTION	BY	APP
AD 00		REVISED PER EDD-11-004835	11MMR11	RK HMR



△ MATERIAL: ZINC ALLOY DIE CASTING.  
 △ SURFACE FINISH: CHROMATE CONVERSION COATING.  
 (ROHS COMPATIBLE).



FOOT PRINT

REV	DATE	DESCRIPTION	BY	APP
8	315'	5223986-8		
7	270'	5223986-7		
6	225'	5223986-6		
5	180'	5223986-5		
4	135'	5223986-4		
3	90'	5223986-3		
2	45'	5223986-2		
1	0'	5223986-1		

THIS DRAWING IS A CONTROLLED DOCUMENT.

UNLESS OTHERWISE SPECIFIED: DIMENSIONS ARE IN MILLIMETERS	UNLESS OTHERWISE SPECIFIED: DIMENSIONS ARE IN MILLIMETERS	UNLESS OTHERWISE SPECIFIED: DIMENSIONS ARE IN MILLIMETERS	UNLESS OTHERWISE SPECIFIED: DIMENSIONS ARE IN MILLIMETERS	UNLESS OTHERWISE SPECIFIED: DIMENSIONS ARE IN MILLIMETERS
--	--	--	--	--

TE Connectivity  
 MODULE, FEMALE, UNIVERSAL POWER MODULE

SIZE: A1 DATE: 100779 DRAWING NO: 5223986

CUSTOMER DRAWING