

4

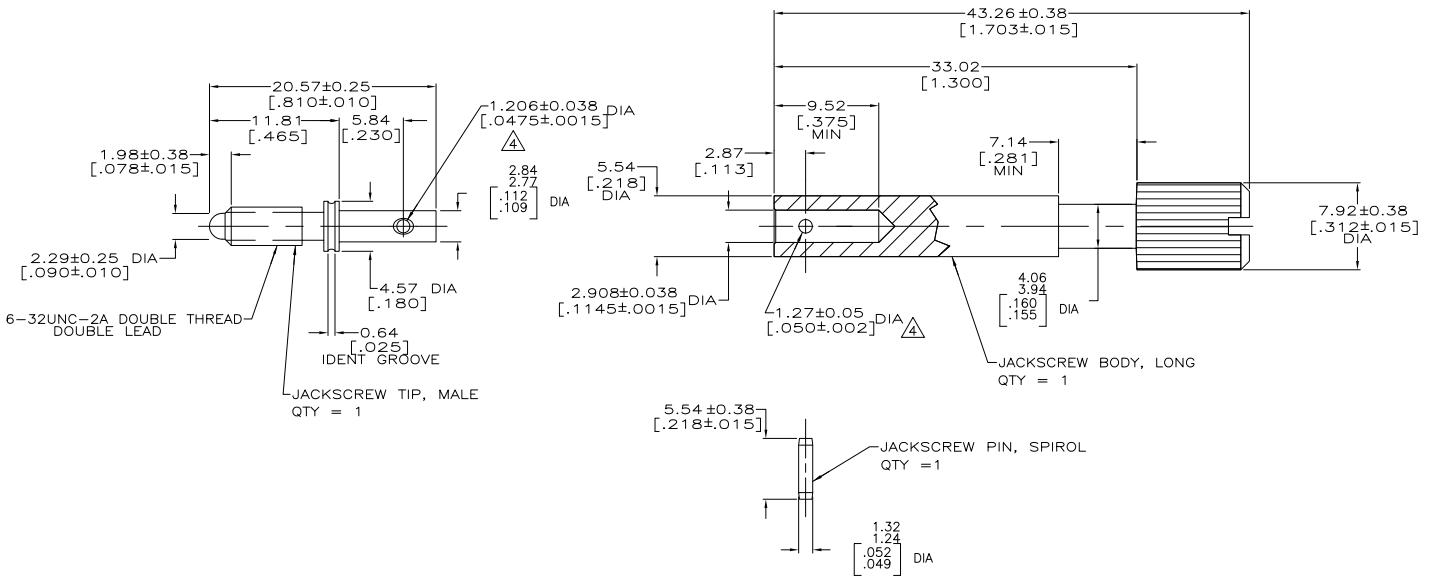
3

2

1

THIS DRAWING IS UNPUBLISHED. RELEASED FOR PUBLICATION. ALL RIGHTS RESERVED.

LOC	DIST	REVISIONS		
F	LNK	DESCRIPTION	DATE	BY
BD	0			
	AC1	REVISED PER ECO-11-005027	11MAR11	RK HMR



- ① ZINC.
- ② STAINLESS STEEL.
- 3 TO ASSEMBLE JACKSCREW REFER TO INSTRUCTION SHEET #1189.
- ④ HOLE CENTRALLY LOCATED WITHIN ±0.07[.003] OF THE 5.54[.218] DIA AND THE 2.77/2.84[.109/.112] DIA CENTER LINES.
- ⑤ CHROMATE CONVERSION CLEAR.
- ⑥ NON-HEXAVALENT CHROMATE COATING ON JACKSCREW BODY.

⑥	1-200871-0
⑥	200871-1
NOTES	PART NUMBER

THIS DRAWING IS A CONTROLLED DOCUMENT.		DRW	K. COLTZ	02/23/04
		CHK	R. STONE	04/16/04
		APPD		
		NAME	JACKSCREW KIT, UNASSEMBLED, MALE, M SERIES	
DIMENSIONS: mm		PRODUCT SPEC		
TOLERANCES UNLESS OTHERWISE SPECIFIED:		APPLICATION SPEC		
0 P.L.C.	±	WEIGHT		
1 P.L.C.	±	SIZE	A2	00779
2 P.L.C.	±	CAGE CODE	C=200871	
3 P.L.C.	± 0.13 (.005)	DRAWING NO		
4 P.L.C.	±	RESTRICTED TO		
ANGLES	±			
MATERIAL	FINISH	CUSTOMER DRAWING	SCALE	4:1
JACKSCREW BODY: ④	JACKSCREW BODY: ④		SHEET	1 of 1
JACKSCREW TIP: ①	JACKSCREW PIN: ②		REV	AC1