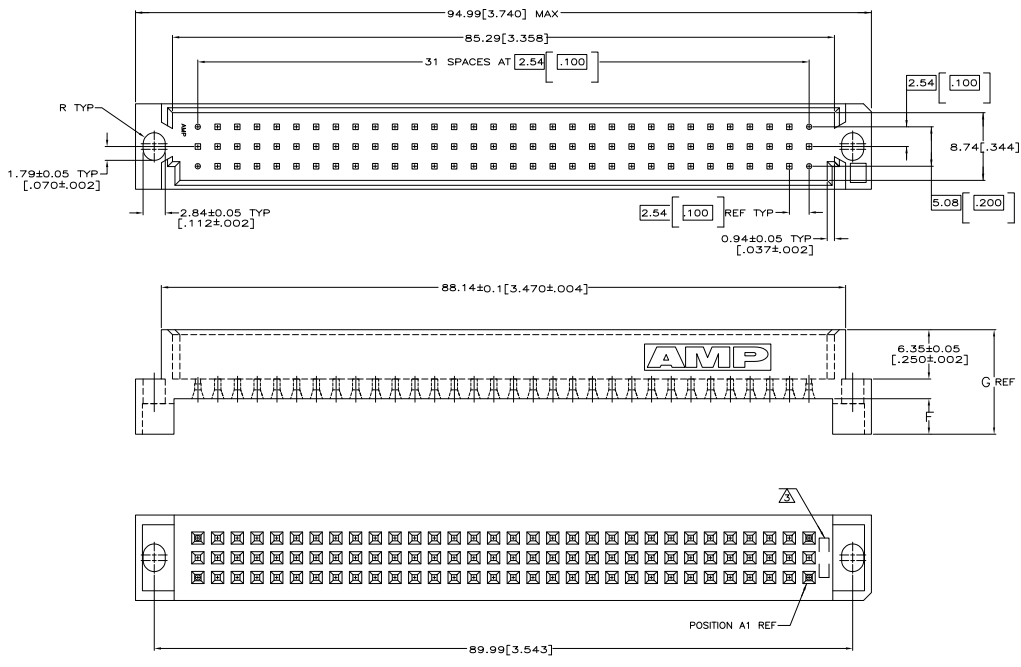
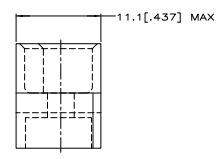


REV	DATE	DESCRIPTION	BY	CHK	APP
AD 00					
H		REV PER EC 0512-002-05		30NOV05	BC AS



- △ HOUSING MATERIAL: GLASS-FILLED POLYESTER. COLOR: GRAY.
- 2. INTERFERENCE CAVITIES LOCATED AT POSITIONS 1,32 IN ROWS "A" AND "C".
- △ AMP PART NUMBER MOLDED IN THIS APPROXIMATE AREA.



OBsolete	16.99	2.36	16.05	7.16	535074-4
OBsolete	13.23	2.36	12.32	3.43	535074-3
	16.99	3.18	15.24	6.35	535074-2
	13.23	3.18	11.43	2.54	535074-1
CONNECTOR					
TAIL LENGTH			G	F	PART NUMBER
BOARD THICKNESS					

THIS DRAWING IS A CONTROLLED DOCUMENT. IT IS THE PROPERTY OF AMP INC. AND IS NOT TO BE REPRODUCED OR TRANSMITTED IN ANY FORM OR BY ANY MEANS, ELECTRONIC OR MECHANICAL, INCLUDING PHOTOCOPYING, RECORDING, OR BY ANY INFORMATION STORAGE AND RETRIEVAL SYSTEM.

DESIGNED BY: J. PATERSON  
 CHECKED BY: J. PATERSON  
 DATE: 05/12/05

SHROUD, EUROCARD WITH MOUNTING HOLES

SIZE: A1  
 DATE: 05/12/05  
 DRAWING NO: G=535074  
 REVISED TO: H

CUSTOMER DRAWING