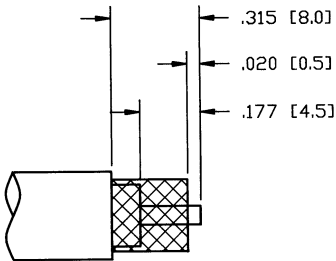
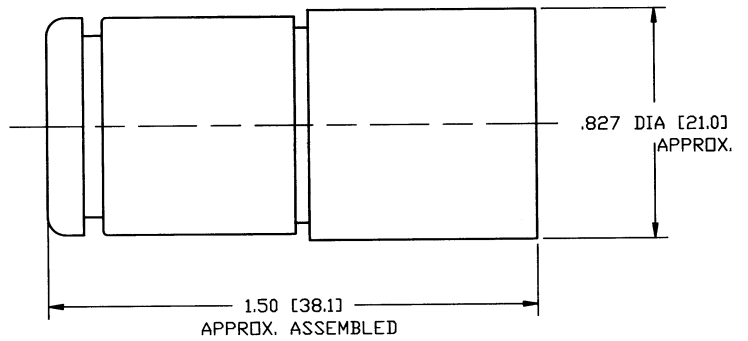


DO NOT SCALE THIS DRAWING



RECOMMENDED CABLE STRIPPING DIM'S

82-202-RFX		REVISIONS			
DRAWING NUMBER	SYM	DESCRIPTION	DATE	E.C.O. NO.	APPR.
	A	OFFICIAL ENG. RELEASE TO MFG.	10/2/91	38063	DR



NOTES:

1. BRASS BODY, NICKEL PLATED.
2. TEFLON INSULATOR.
3. GOLD PLATED, BRASS CONTACT, .000003.
4. PACKAGED IN BAG 999-378
6. CAPTIVATED CONTACT, .090 WIRE ENTRY.

ENGLISH [METRIC]

PART NO.	QUAN	UOM	ITEM LINE NO	DESCRIPTION	CODE	FINISH
----------	------	-----	--------------	-------------	------	--------

LIST OF MATERIAL

REMOVE ALL BURRS, BREAK CORNERS AND SHARP EDGES, TO MAXIMUM UNLESS OTHERWISE SPECIFIED.

H:\DEPT611\N\082\ASSY\202RFX

NOTICE - These drawings, specifications, or other data (1) are, and remain the property of Amphenol Corp. (2) must be returned upon request; and (3) are confidential and are not to be disclosed to any person other than those to whom they are given by Amphenol Corp. The furnishing of these drawings, specifications, or other data by Amphenol Corp. or by any other person to anyone for any purpose is not to be regarded by implication or otherwise as in any manner licensing, granting rights or permitting such holder or any other person to manufacture, use or sell any product, process or design, patented or otherwise, that may in any way be related to or disclosed by said drawings, specifications or other data.

MATERIAL	NEXT ASSY	USED ON

UNLESS OTHERWISE SPECIFIED DIMENSIONS ARE IN INCHES. TOLERANCES NOT OTHERWISE SPECIFIED ARE:	2 PLACE DECIMAL ±.015 (0.381 mm)	3 PLACE DECIMAL ±.005 (0.127 mm)	ANGLES ± 1°
REFERENCE DRAWING NO.	EAR 962370		

DRAWN BY	DATE
TERRI ALBERA	4-29-90
CHECKED	DATE
<i>[Signature]</i>	2/13/91
ENGINEER	DATE
<i>[Signature]</i>	2/13/91
QUALITY ASSURANCE	DATE
<i>[Signature]</i>	2/13/91
MFG. ENG.	DATE
<i>[Signature]</i>	9-19-91

TITLE
N CLAMP SOLDER PLUG FOR RG8, 213 & 214 CABLE UG21D/U TYPE, 50 OHM

Amphenol Corporation			
RF/Microwave Operations Danbury, Conn. U.S.A.			
SCALE NTS	SHEET OF		
CODE IDENTIFICATION	DRAWING SIZE	DRAWING NO.	ISSUE
74868	B	82-202-RFX	A