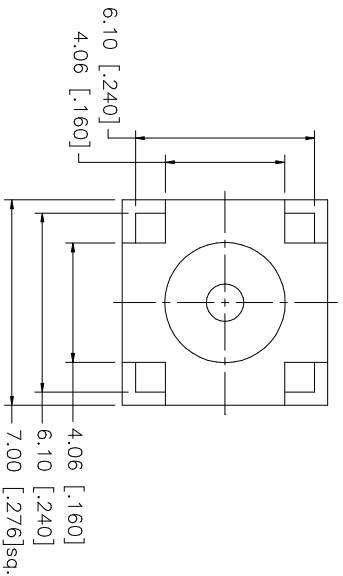
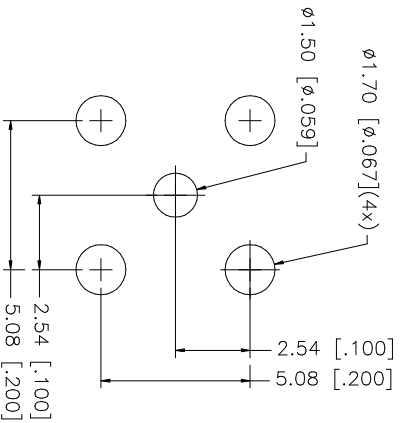
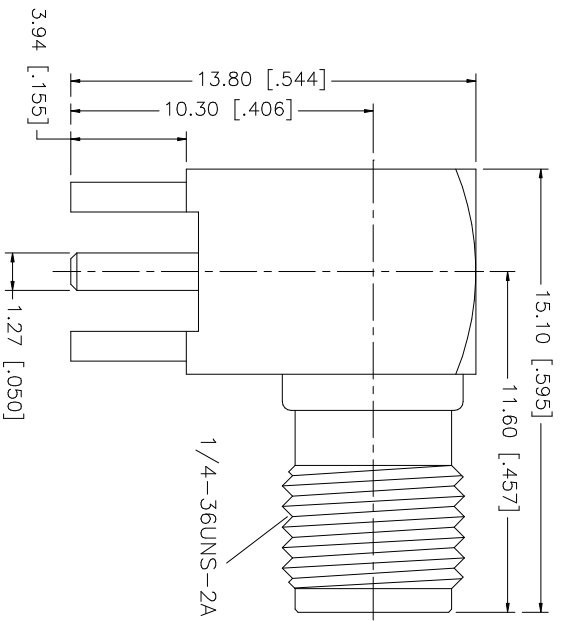


REV.	DATE	DESCRIPTION
A	03/18/03	UPDATE DRAWINGS FORMATS/ PLATING TO GOLD
B	07/14/05	MODIFY BODY MATERIAL TO BRASS



QTY	FINISH	MATERIAL	DESCRIPTION
1	GOLD	BRASS	CONTACT PIN
1	NATURAL	TEFLON	INSULATOR
1	GOLD	BRASS	BODY

UNLESS OTHERWISE SPECIFIED DIMENSIONS ARE IN MILLIMETERS. DIMENSIONS IN [] ARE IN INCHES AND FOR CUSTOMER REFERENCE ONLY.	UNLESS OTHERWISE SPECIFIED DIMENSIONS ARE IN MILLIMETERS. DIMENSIONS IN [] ARE IN INCHES AND FOR CUSTOMER REFERENCE ONLY.	UNLESS OTHERWISE SPECIFIED DIMENSIONS ARE IN MILLIMETERS. DIMENSIONS IN [] ARE IN INCHES AND FOR CUSTOMER REFERENCE ONLY.
0.5 - 8mm ± 0.20mm	0.020 - .315 = ± 0.007"	DO NOT SCALE DRAWING
8 - 30mm ± 0.40mm	.315 - 1.180 = ± 0.015"	
30 - 120mm ± 0.50mm	1.180 - 4.724 = ± 0.020"	

APPROVALS	DATE
DRAWN G.R.S.	07/14/05
CHECKED	
ISSUED	
SHEET 1 OF 1	

PART DESCRIPTION	PART NO.
SMA R/A P.C.B. RECEPTACLE REVERSE POLARIZED	132136RP

CAD FILE	DWG. NO.	REV.	SIZE	SCALE
C:/132/132136RP.DWG	132136RP.DWG	B	A	NA

Amphenol Connex

SMA R/A P.C.B. RECEPTACLE
REVERSE POLARIZED

132136RP