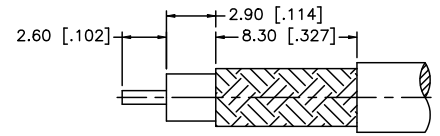
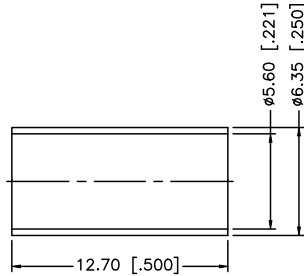
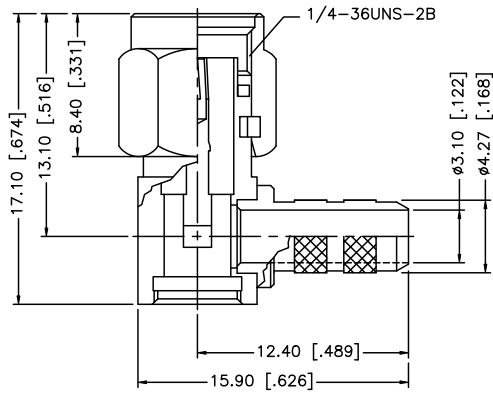


REV.	DATE	ECR NO.	DESCRIPTION
A	04/31/03	-	UPDATE DRAWING FORMAT
B	06/21/05	-	CHANGE 59/U TO 58/U IN PART DESCRIPTION
C	09/10/08	-	CHANGE 58/U TO 55/U IN PART DESCRIPTION



RECOMMENDED  
CABLE STRIPPING DIM'S

NOTE:

1. CRIMPED FERRULE HEX CRIMP SIZE .213" [5.41]
2. CONTACT PIN TO SOLDER.

DESCRIPTION	MATERIAL	FINISH	QTY	DO NOT SCALE DRAWING	APPROVALS	DATE	<h2 style="color: blue; margin: 0;">Amphenol Connex</h2>	
8				UNLESS OTHERWISE SPECIFIED DIMENSIONS ARE IN MILLIMETERS. DIMENSIONS IN [ ] ARE IN INCHES AND FOR CUSTOMER REFERENCE ONLY.	DRAWN	GRS		<p>PART DESCRIPTION</p> <p style="text-align: center;"><b>SMA R/A CRIMP PLUG</b> (FOR RG-55/U, 223/U, 142/U, 400/U CABLE)</p>
7	FERRULE	COPPER	GOLD	1	CHECKED			
6	COVER	BRASS	GOLD	1	ISSUED			
5	GASKET	SILICONE	RED	1	SHEET	1 OF 1		
4	RETAINER RING	BER. COPPER	NATURAL	1			PART NO.	
3	CONTACT PIN	BRASS	GOLD	1			<b>132194</b>	
2	INSULATOR	PTFE	NATURAL	1			DWG. NO.	
1	BODY/BARREL	BRASS	GOLD	1			132194.DWG	
					CAD FILE	C:/132/132194.DWG	REV. NC	
							SIZE A	
							SCALE NA	

UNLESS OTHERWISE SPECIFIED DIMENSIONS ARE IN MILLIMETERS. DIMENSIONS IN [ ] ARE IN INCHES AND FOR CUSTOMER REFERENCE ONLY.

UNLESS OTHERWISE SPECIFIED TOLERANCES FOR MILLIMETERS ARE:  
0.5 - 8mm ± 0.20mm  
8 - 30mm ± 0.40mm  
30 - 120mm ± 0.50mm

UNLESS OTHERWISE SPECIFIED TOLERANCES FOR INCHES ARE:  
.020 - .315 = ± 0.007"  
.315 - 1.180 = ± 0.015"  
1.180 - 4.724 = ± 0.020"

## Amphenol Connex

PART DESCRIPTION

**SMA R/A CRIMP PLUG**  
(FOR RG-55/U, 223/U, 142/U, 400/U CABLE)

PART NO. **132194**

DWG. NO. 132194.DWG    REV. NC    SIZE A    SCALE NA