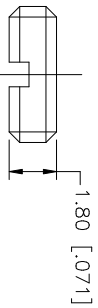
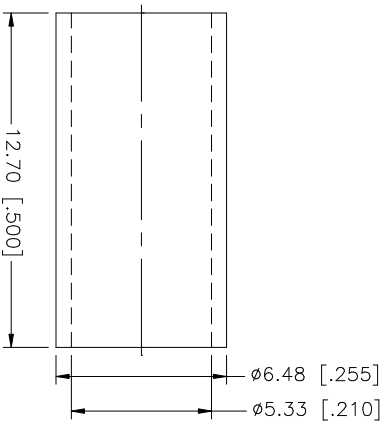
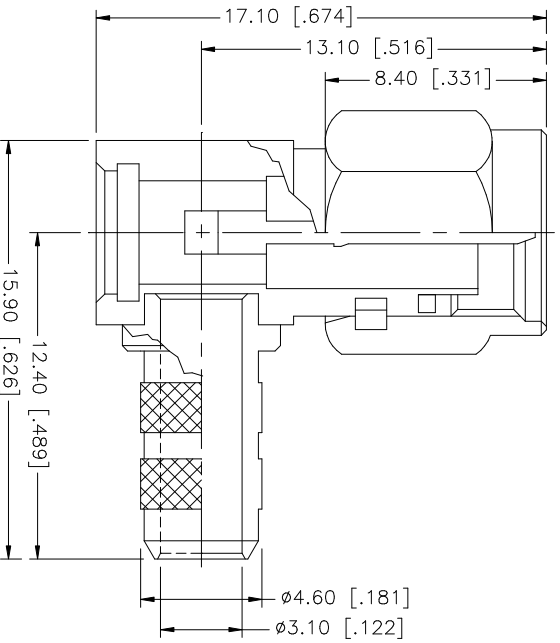
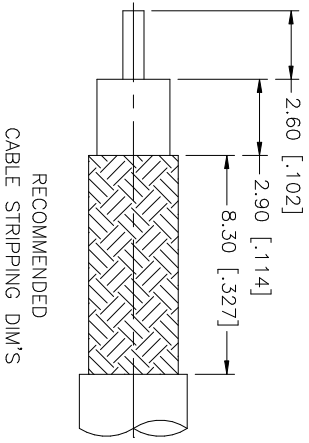


REV.	DATE	DESCRIPTION
NC	02/24/03	INITIAL RELEASE



- NOTE:
1. CRIMPED FERRULE
HEX CRIMP SIZE .213"
 2. CONTACT PIN TO SOLDER

QTY	DESCRIPTION	MATERIAL	FINISH	DO NOT SCALE DRAWING	APPROVALS	DATE	PART DESCRIPTION	DWG. NO.	REV.	SIZE	SCALE
1	INSULATOR	TEFLON	NATURAL	1.180 - 4.724 = ± 0.020"			Amphenol Connex SMA R/A CRIMP PLUG (FOR RG-141/U CABLE)	132122	NC	A	NA
1	HOUSING W/ BARREL	BRASS	GOLD	.315 - 1.180 = ± 0.015"							
1	CONTACT PIN	BRASS	GOLD	.020 - .315 = ± 0.007"							
1	COVER	BRASS	GOLD	8 - 30mm ± 0.40mm							
1	FERRULE	COPPER	GOLD	0.5 - 8mm ± 0.20mm							
1	CONTACT PIN	BRASS	GOLD	30 - 120mm ± 0.50mm							
1	HOUSING W/ BARREL	BRASS	GOLD	1.180 - 4.724 = ± 0.020"							
1	INSULATOR	TEFLON	NATURAL	.315 - 1.180 = ± 0.015"							
1	HOUSING W/ BARREL	BRASS	GOLD	1.180 - 4.724 = ± 0.020"							
1	CONTACT PIN	BRASS	GOLD	.020 - .315 = ± 0.007"							
1	COVER	BRASS	GOLD	8 - 30mm ± 0.40mm							
1	FERRULE	COPPER	GOLD	0.5 - 8mm ± 0.20mm							
1	CONTACT PIN	BRASS	GOLD	30 - 120mm ± 0.50mm							
1	HOUSING W/ BARREL	BRASS	GOLD	1.180 - 4.724 = ± 0.020"							
1	INSULATOR	TEFLON	NATURAL	.315 - 1.180 = ± 0.015"							
1	HOUSING W/ BARREL	BRASS	GOLD	1.180 - 4.724 = ± 0.020"							