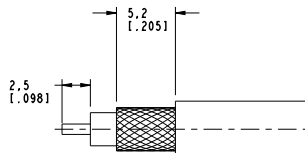
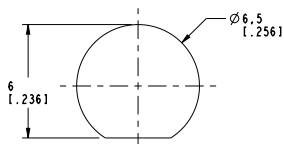
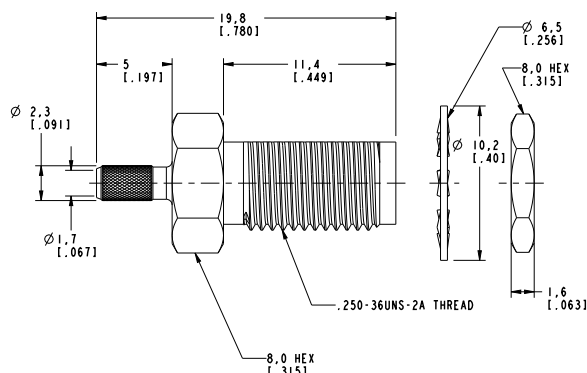
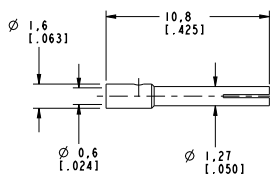
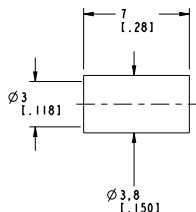
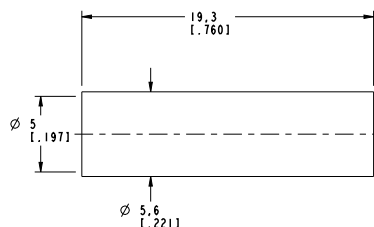


1. MATERIALS OF CONSTRUCTION:
BODY & HEX NUT = BRASS (ASTM-B16 H02, C36000), GOLD PLATED (.000003 MIN THICK)
CONTACT PIN = BeCu (Q0-C-5301), GOLD PLATED (.000050 MIN THICK)
LOCKWASHER = BRASS (Q0-B-6131), GOLD PLATED (.000003 MIN THICK)
FERRULE = COPPER, GOLD PLATED (.000003 MIN THICK)
INSULATOR = PTFE, ASTM D 1710 OR EQUIV.
HEAT SHRINK TUBING = COLOR BLACK

SCALE 1.500



RECOMMENDED MOUNTING
HOLE DIMENSIONS
SCALE 5.000

RECOMMENDED CABLE
STRIPPING DIMENSIONS
SCALE 3.000

CUSTOMER OUTLINE DRAWING
ALL OTHER SHEETS ARE FOR INTERNAL USE ONLY

UNLESS OTHERWISE SPECIFIED, DIMENSIONS ARE IN MM (INCHES) AND TOLERANCES ARE: 0.5 - 6mm 6 - 30mm 30 - 120mm		MATERIAL	DRAWN C. McGRATH	DATE 10/11/02	TITLE SMA BULKHEAD CRIMP JACK (FOR RG-174/U, 88GA/U, 316/U CABLES)	Amphenol Amphenol Corporation Communication and Network Products Division Danbury, CT, U.S.A. 06810
NOTICE - These drawings, specifications, or other data (1) are, and remain the property of Amphenol Corp. (2) must be returned upon request; and (3) are confidential and not to be disclosed to any person other than those to whom they were given by Amphenol Corp. The foregoing specifications, tolerances, dimensions and data by Amphenol Corp., or to any other person to anyone for any purpose is not to be copied by or otherwise used by any other person without written rights or permitting such holder or any other person to manufacture, use or sell any product, process or design, patented or otherwise, that may in any way be related to or disclosed by said drawings, specifications, or other data.		REFERENCE GENV 901-10039-RFX-ASSY EAR 966280-3 & 111-954413	ENGINEER O. BARTHELME	DATE 10/11/02		
			APPROVED O. BARTHELME	DATE 10/20/02		
		CAD FILE 1:\SMA\901-9875			CODE ID DWG SIZE DRAWING NO. 74868 B 901-9875	
						REV C