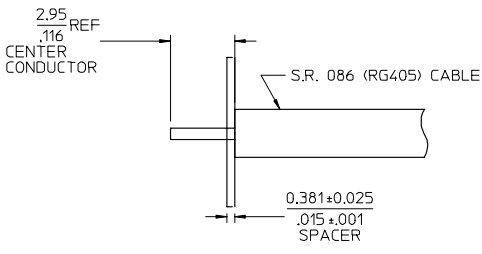
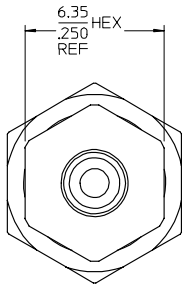
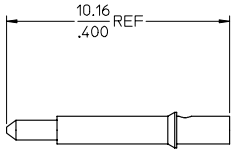
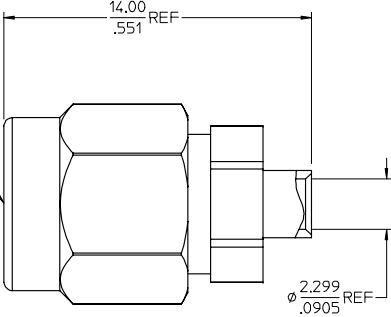
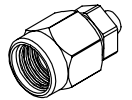


13 12 11 10 9 8 7 6 5 4 3 2 1

J MATERIALS AND FINISHES
 BODY STAINLESS STEEL
 PLATED GOLD (10 MICRONS MIN)
 I COUPLING NUT STAINLESS STEEL
 PLATED PASSIVATED
 H CENTER CONTACT BRASS
 PLATED GOLD (30 MICRONS MIN)
 G INSULATOR TEFLON
 F GASKET SILICONE RUBBER



RECOMMENDED STRIP DIMENSIONS

NOTE: MUST USE SPACER TO SOLDER
 CENTER CONTACT TO CENTER
 CONDUCTOR OF CABLE

MIL-STD-348A, FIG. 310.1	INTERFACE
SPECIFICATION	DESCRIPTION

PART # 73251-2430

B UNLESS OTHERWISE SPECIFIED DIMS ARE MILLIMETERS AND ANGLES ARE DEGREES. ● ALL OVER. ● NO CHATTER OR NON-UNIFORM SURFACE FINISH ALLOWED. ● PARTS TO BE FREE OF BURRS & SHARP EDGES 0.13(.005) MAX BREAK. ● EXTERNAL THREADS TO BE ROLLED OR SINGLE POINT. ● DIAMETERS TO BE CONCENTRIC WITHIN 0.08(.003) TR.	CHG: REDREW TO SHOW NEW CONT & STRIPPING CABLING INSTRS. ON THE MAIN LENS BERYLLIUM COPPER. EEC NO: URF2005-0350 DRAWN: ROBERTSON 2005/02/24 CHKD: SHAH 2005/02/24 APPR: JENSEN 2005/02/24	QUALITY SYMBOLS ▽=0 ▽=0	GENERAL TOLERANCES (UNLESS SPECIFIED) <table border="1"> <tr> <th></th> <th>mm</th> <th>INCH</th> </tr> <tr> <td>4 PLACES</td> <td>± .005</td> <td>± .0005</td> </tr> <tr> <td>3 PLACES</td> <td>± .005</td> <td>± .0005</td> </tr> <tr> <td>2 PLACES</td> <td>± .005</td> <td>± .0005</td> </tr> <tr> <td>1 PLACE</td> <td>± .005</td> <td>± .0005</td> </tr> </table>		mm	INCH	4 PLACES	± .005	± .0005	3 PLACES	± .005	± .0005	2 PLACES	± .005	± .0005	1 PLACE	± .005	± .0005	DIMENSION STYLE MM/IN	SCALE DESIGN UNITS METRIC	THIRD ANGLE PROJECTION
			mm	INCH																	
4 PLACES	± .005	± .0005																			
3 PLACES	± .005	± .0005																			
2 PLACES	± .005	± .0005																			
1 PLACE	± .005	± .0005																			
DRAFT WHERE APPLICABLE MUST REMAIN WITHIN DIMENSIONS			DRAWN BY: TEF 2005/01/26 CHECKED BY: SSS 2005/01/26 APPROVED BY: JDW 2005/01/26	TITLE SMA PLUG, STR FOR RG405 50 OHMS, EWR-2409 SMA-PC																	
MATERIAL NO. 732512430 SIZE C			DOCUMENT NO. SD-73251-243		SHEET NO. 1 OF 1																

tb_frame_C_P_AM_T
 Rev. D 2004/06/28

12 11 10 9 8 7 6 5 4 3 2 1