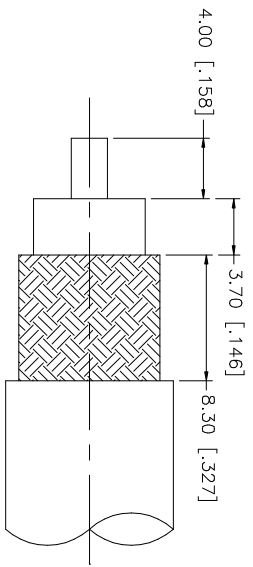
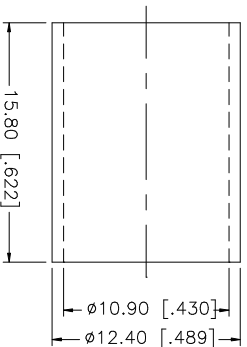
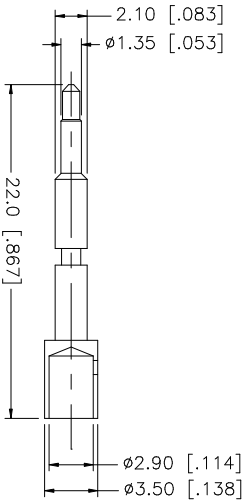
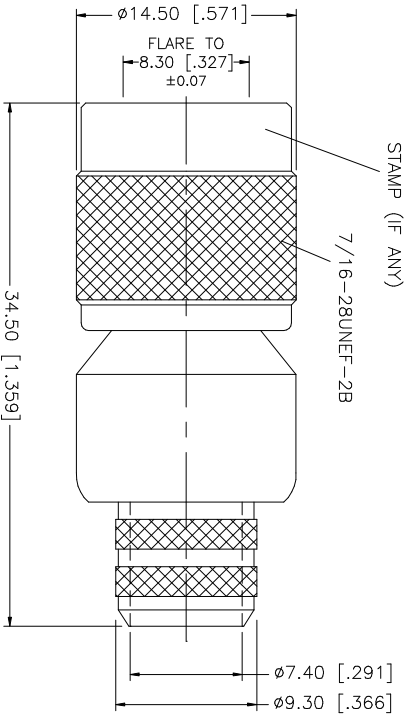


REV.	DATE	DESCRIPTION
A	01/15/04	UPDATE DRAWING FORMAT



RECOMMENDED CABLE STRIPPING DIMENSIONS



- NOTE:
1. CRIMPED FERRULE
HEX CRIMP SIZE .429"
 2. CONTACT PIN TO SOLDER
OR .118" HEX CRIMP

QTY	DESCRIPTION	MATERIAL	FINISH	QTY	DO NOT SCALE DRAWING	APPROVALS	DATE	PART DESCRIPTION
1	BODY	BRASS	NICKEL	1	1.180 - 1.180 = ± 0.015" 1.180 - 4.724 = ± 0.020"			TNC CRIMP PLUG (FOR BELDEN 8214, 9913, 9914 CABLE)
1	INSULATOR	TEFLON	NATURAL	1	.315 - 1.180 = ± 0.015"			
1	CONTACT PIN	PHOS. BRONZE	GOLD	1	.020 - .315 = ± 0.007"			
1	FERRULE	COPPER	NICKEL	1	0.5 - 8mm ± 0.20mm 8 - 30mm ± 0.40mm 30 - 120mm ± 0.50mm			
6								
7								
8								
9								

Amphenol Connex

TNC CRIMP PLUG
(FOR BELDEN 8214, 9913, 9914 CABLE)

122393

ISSUED	CHECKED	DATE
1 OF 1		01/15/04

CAD FILE
C:/122/122393.DWG

DWG. NO.	REV.	SIZE	SCALE
122393.DWG	A	A	NA