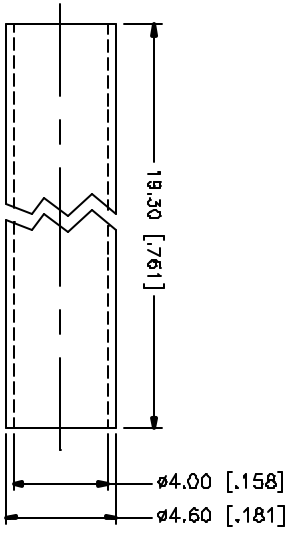
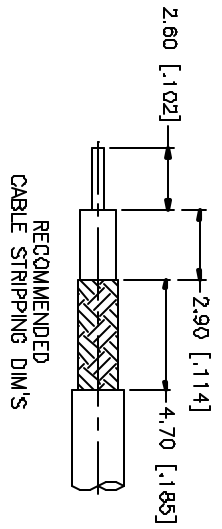
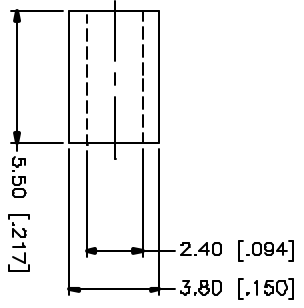
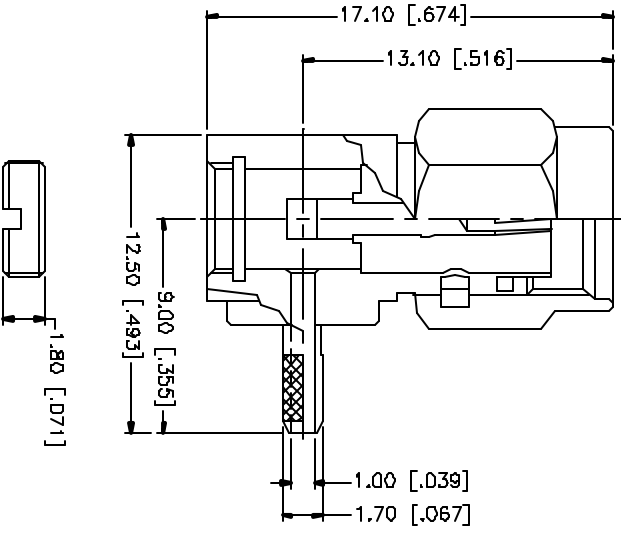


REV.	DATE	DESCRIPTION
A	05/01/04	UPDATE DRAWING FORMAT



NOTE:
 1. CRIMPED FERRULE
 HEX CRIMP SIZE .128"
 2. CONTACT PIN TO SOLDER

REV.	DATE	DESCRIPTION	MATERIAL	FINISH	QTY
8					
7					
6		HEAT SHRINK TUBING	BLACK		
5		FERRULE	COPPER	GOLD	1
4		COVER	BRASS	GOLD	1
3		CONTACT PIN	BRASS	GOLD	1
2		INSULATOR	TEFLON	NATURAL	1
1		HOUSING/BODY	BRASS	GOLD	1
DESCRIPTION					

UNLESS OTHERWISE SPECIFIED, DIMENSIONS ARE IN INCHES AND FOR CHARACTERISTICS, SEE MIL-SPECIFICATIONS FOR MATERIALS AND DIMENSIONS FOR MILLIMETER FIGS.	
UNLESS OTHERWISE SPECIFIED, DIMENSIONS FOR MILLIMETER FIGS.	
D.5 - 30mm ± 0.20mm	
B - 30mm ± 0.40mm	
30 - 120mm ± 0.50mm	
UNLESS OTHERWISE SPECIFIED, DIMENSIONS FOR INCHES FIGS.	
.020 - .315 - ± 0.007"	
.315 - 1.180 - ± 0.015"	
1.180 - 4.724 - ± 0.020"	

APPROVALS	DATE
DRAWN G.R.S.	05/01/04
CHECKED	
ISSUED	
SHEET 1 OF 1	

CAD FILE	C:/132/132173.DWG
DWG. NO.	132173.DWG
REV.	A
SIZE	A
SCALE	NA

PART DESCRIPTION	
SMA R/A CRIMP PLUG (FOR RG-178B/U, 196A/U)	
PART NO.	132173

Amphenol Connex