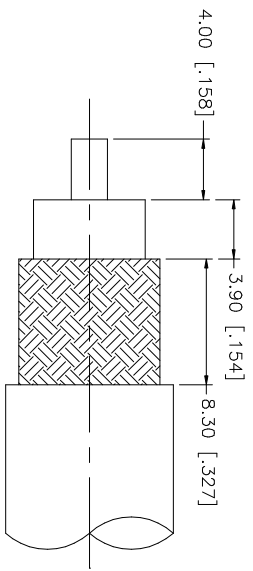
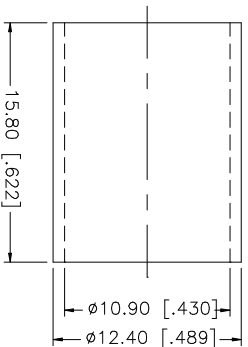
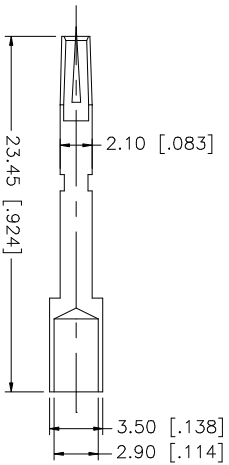
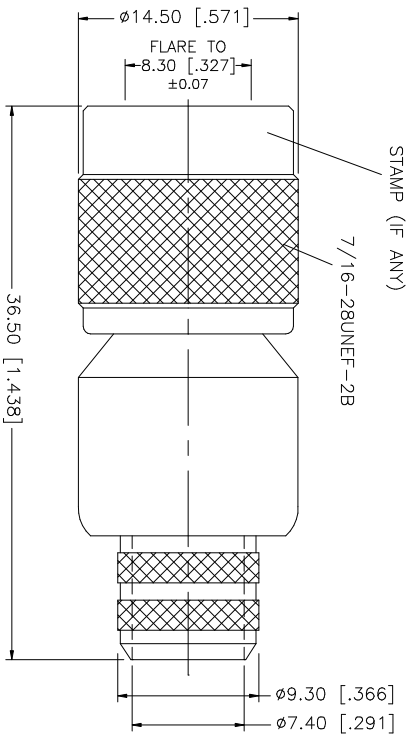


REV.	DATE	DESCRIPTION
A	04/05/03	UPDATE DRAWING FORMAT



RECOMMENDED CABLE STRIPPING DIMENSIONS



- NOTE:
1. CRIMPED FERRULE
HEX CRIMP SIZE .429"
 2. CONTACT PIN TO SOLDER
OR .118" HEX CRIMP

QTY	DESCRIPTION	MATERIAL	FINISH	QTY	DO NOT SCALE DRAWING	APPROVALS	DATE	PART DESCRIPTION
1	SHELL/BODY	BRASS	NICKEL	1	1.180 - 4.724 = ± 0.020"			
1	INSULATOR	TEFLON	NATURAL	1	.315 - 1.180 = ± 0.015"			
1	CONTACT PIN	PHOS. BRONZE	GOLD	1	.020 - .315 = ± 0.007"			
4	GASKET	RUBBER	RED	1	UNLESS OTHERWISE SPECIFIED TOLERANCES FOR MILLIMETERS ARE: 0.5 - 8mm ± 0.20mm 8 - 30mm ± 0.40mm 30 - 120mm ± 0.50mm			
5	FERRULE	COPPER	NICKEL	1	UNLESS OTHERWISE SPECIFIED TOLERANCES FOR MILLIMETERS ARE: 0.5 - 8mm ± 0.20mm 8 - 30mm ± 0.40mm 30 - 120mm ± 0.50mm			
8								
9								

Amphenol Connex

TNC REVERSE POLARITY CRIMP PLUG
(FOR BELDEN 8214, 9913 LMR 400 CABLE)

CAD FILE	C:/122/122393RP.DWG	DWG. NO.	122393RP.DWG	REV.	A	SIZE	A	SCALE	NA
----------	---------------------	----------	--------------	------	---	------	---	-------	----