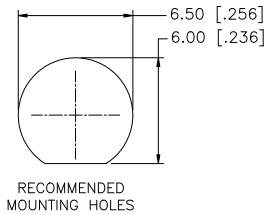
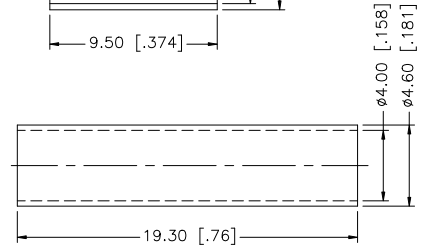
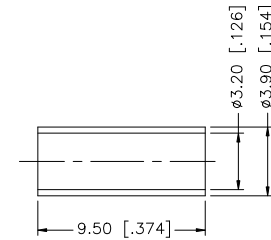
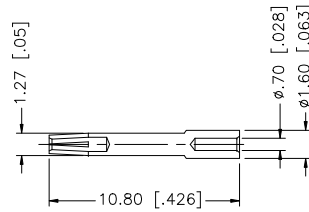
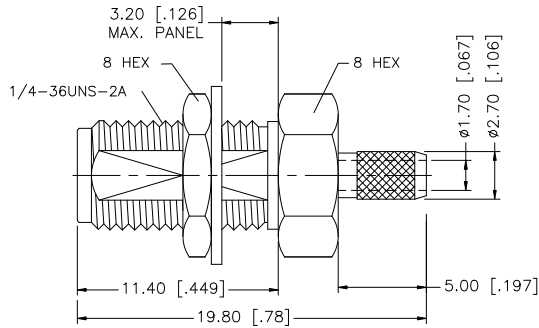
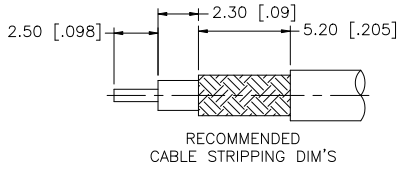


REV.	DATE	ECR NO.	DESCRIPTION
A	01/29/00	-	UPDATE FERRULE
B	01/02/01	-	MODIFY BARREL, ADD HEAT SHRINK
C	04/31/03	-	UPDATE DRAWING FORMAT
D	04/20/08	100009	REVISE BARREL O.D., FERRULE O.D. AND I.D.



NOTES:

1. CRIMPED FERRULE HEX CRIMP SIZE .128"
2. CONTACT PIN TO SOLDER
3. MAX. PANEL THICKNESS = 3.2mm

				UNLESS OTHERWISE SPECIFIED DIMENSIONS ARE IN MILLIMETERS. DIMENSIONS IN [] ARE IN INCHES AND FOR CUSTOMER REFERENCE ONLY.	APPROVALS	DATE	Amphenol Connex					
8											PART DESCRIPTION SMA BULKHEAD CRIMP JACK (FOR RG-174/U, 188A/U, 316/U CABLE)	
7	HEAT SHRINK TUBING			1	DRAWN	GRS	04/23/08	PART NO. 132119				
6	FERRULE	COPPER	GOLD	1	CHECKED							DWG. NO. 132119.DWG
5	HEX NUT	BRASS	GOLD	1	ISSUED			REV. D SIZE A SCALE NA				
4	LOCK WASHER	BRASS	GOLD	1	SHEET	1 OF 1						CAD FILE C:/132/132119.DWG
3	CONTACT PIN	BER. COPPER	GOLD	1				DO NOT SCALE DRAWING				
2	INSULATOR	PTFE	NATURAL	1								
1	BODY	BRASS	GOLD	1								
				UNLESS OTHERWISE SPECIFIED TOLERANCES FOR MILLIMETERS ARE: 0.5 - 8mm ± 0.20mm 8 - 30mm ± 0.40mm 30 - 120mm ± 0.50mm UNLESS OTHERWISE SPECIFIED TOLERANCES FOR INCHES ARE: .020 - .315 = ± 0.007" .315 - 1.180 = ± 0.015" 1.180 - 4.724 = ± 0.020"								