

MATERIALS AND FINISHES

BODY, REAR BODY, COUPLING NUT BRASS
PLATED GOLD

CENTER CONTACT BRASS
PLATED GOLD

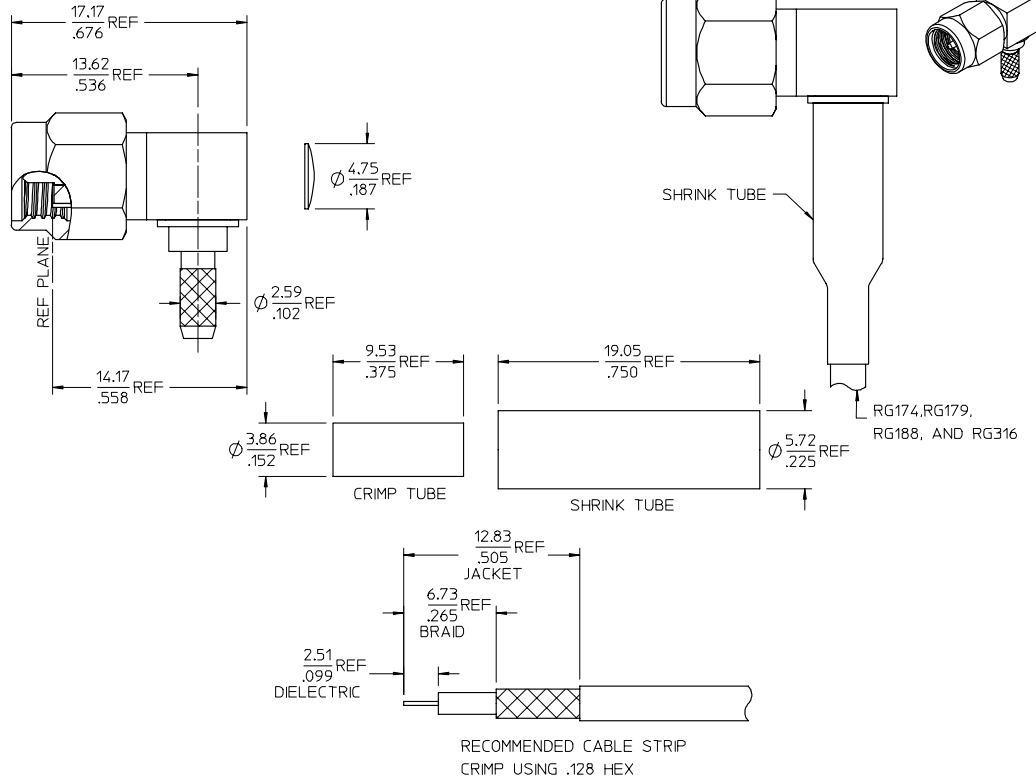
INSULATOR TEFLON

CAP STAINLESS STEEL
PASSIVATED

C-RING BERYLLIUM COPPER

CRIMP TUBE BRASS
PLATED NICKEL FOR 73391-0230 THRU -0232
PLATED GOLD FOR 73391-0233

SHRINK TUBE VERSAFIT



PART NO.
73391-0230 WITH OUT SHRINK TUBE
73391-0231 WITH SHRINK TUBE
73391-0233 WITH OUT SHRINK TUBE

ES-89675-1600	CABLE ASSY INSTRUCTION
PS-89675-2900	ELECTRO/MECH PERFORM.
MIL-STD-348A, FIG. 310-1	INTERFACE
SPECIFICATION	DESCRIPTION

73391-0232	73391-0230 BY TRAY (20 CAV.), NICKEL
PART NO.	PACKAGING

CHG: ELECTRO/MECH SPECIFICATION	2007/09/06
WAS: NICKEL PLATE	2007/09/06
SK: NICKEL PLATE	2007/09/06
PER: MIL-DTL-23033/5 (CLASS I AND III)	2007/09/06
EC NO: URF2008-0195	2007/09/06
DR: WISSWAH	2007/09/06
CHK: FLAHERTY	2007/09/06
APPR: JEWENER	2007/09/06
REV	DESCRIPTION
A5	

QUALITY SYMBOLS	GENERAL TOLERANCES (UNLESS SPECIFIED)
▽=0	4 PLACES ± .005
▽=0	3 PLACES ± .005
	2 PLACES ± .005
	1 PLACE ± .005
	ANGULAR ± 2°
	DRAFT WHERE APPLICABLE MUST REMAIN WITHIN DIMENSIONS

DIMENSION STYLE	SCALE	DESIGN UNITS	THIRD ANGLE PROJECTION
MM/IN		METRIC	
DRAWN BY	DATE	TITLE	
LYNN LIN	2001/01/30	SMA PLUG R/A 50 OHMS FOR	
CHECKED BY	DATE	RG174,179,187,188,316	
KERRIE	2001/01/30	SMA-PC/RA	
APPROVED BY	DATE	MOLEX INCORPORATED	
MISEN	2001/01/30		
MATERIAL NO.	DOCUMENT NO.	SHEET NO.	
SEE TABLE	SD-73391-023	1 OF 1	

THIS DRAWING CONTAINS INFORMATION THAT IS PROPRIETARY TO MOLEX INCORPORATED AND SHOULD NOT BE USED WITHOUT WRITTEN PERMISSION	
---	--