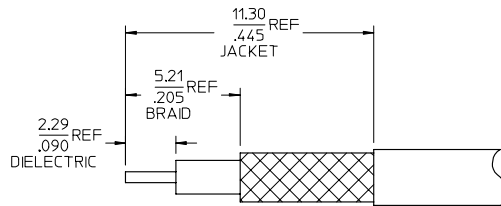
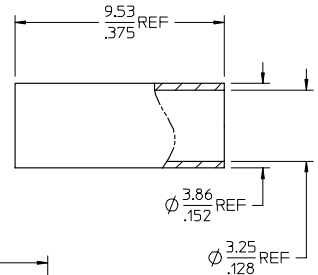
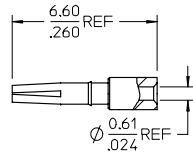
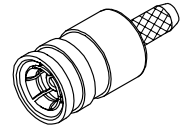
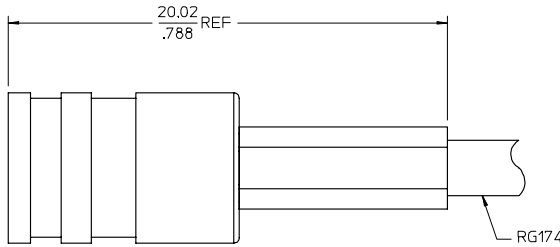
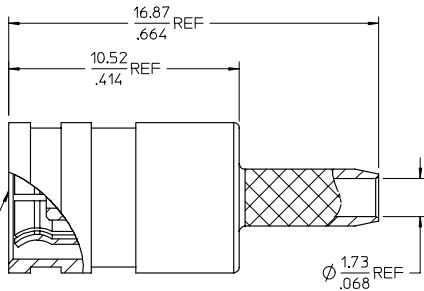


MATERIALS AND FINISHES,

- J BODY ZINC ALLOY
PLATED NICKEL
- I CENTER CONTACT PHOSPHOR BRONZE
PLATED GOLD
- H INSULATOR TEFLON
- H OUTER CONTACT BERYLLIUM COPPER
PLATED NICKEL
- G CRIMP TUBE BRASS
PLATED NICKEL

SMB PLUG
INTERFACE



RECOMMENDED STRIPPING DIMENSIONS
CRIMP HEX SIZE 3.25(.128)

PART # 73404-0710

MIL-STD-348A, FIG. 311-2	INTERFACE
SPECIFICATION	DESCRIPTION

CHG: NEW RELEASE
ADDED STRIPPING
DIMENSIONS

EC NO. URF2007-0386
DRAWN: SSSAH 2007/03/20
CHKD: FLAHERTY 2007/03/20
APPR: JWIENER 2007/03/20

QUALITY SYMBOLS
▽=0
▽=0

GENERAL TOLERANCES (UNLESS SPECIFIED)	
mm	INCH
4 PLACES ± .005	± .0004
3 PLACES ± .008	± .0005
2 PLACES ± .010	± .0006
1 PLACE ± .015	± .0008
ANGULAR ± 2°	

DIMENSION STYLE	
MM/IN	SCALE
DRAWN BY SSS	DATE 2001/11/10
CHECKED BY TEF	DATE 2001/11/10
APPROVED BY GMH	DATE 2001/11/10

DESIGN UNITS	THIRD ANGLE PROJECTION
METRIC	<input checked="" type="checkbox"/>
TITLE: SMB PLUG, STR, RG174 50 OHMS, EWR1503 SMB-PC	
MOLEX INCORPORATED	
MATERIAL NO. 734040710	DOCUMENT NO. SD-73404-071
SIZE C	SHEET NO. 1 OF 1

DRAFT WHERE APPLICABLE MUST REMAIN WITHIN DIMENSIONS

THIS DRAWING CONTAINS INFORMATION THAT IS PROPRIETARY TO MOLEX INCORPORATED AND SHOULD NOT BE USED WITHOUT WRITTEN PERMISSION