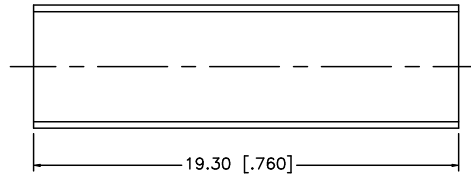
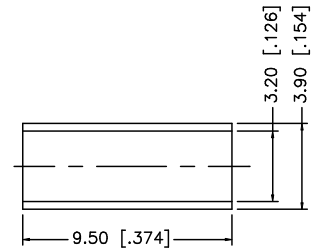
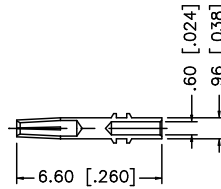
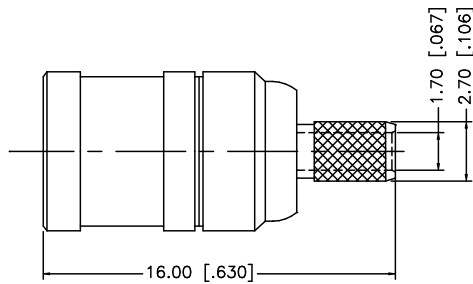
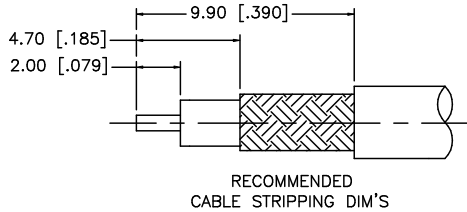


REV.	DATE	DESCRIPTION
A	04/31/03	UPDATE DRAWING FORMAT
B	05/08/07	REVISE BARREL , FERRULE DIMENSIONS



NOTE:

1. CRIMPED FERRULE HEX CRIMP SIZE .128"
2. CONTACT PIN TO SOLDER.

DESCRIPTION	MATERIAL	FINISH	QTY	UNLESS OTHERWISE SPECIFIED DIMENSIONS ARE IN MILLIMETERS. DIMENSIONS IN [ ] ARE IN INCHES AND FOR CUSTOMER REFERENCE ONLY.	APPROVALS	DATE	Amphenol Connex							
8					DRAWN	G.R.S.	05/08/07	<b>SMB CRIMP PLUG</b> (FOR RG-174/U, 188A/U, 316/U)						
7					CHECKED		PART DESCRIPTION							
6					ISSUED		PART NO.							
5	HEAT SHRINK TUBE	BLACK	1	UNLESS OTHERWISE SPECIFIED TOLERANCES FOR MILLIMETERS ARE: 0.5 - 8mm ± 0.20mm 8 - 30mm ± 0.40mm 30 - 120mm ± 0.50mm	SHEET	1 OF 1	142186							
4	FERRULE	COPPER	GOLD	1	CAD FILE	C:/142/142186.DWG	DWC. NO. 142186.DWG							
3	CONTACT PIN	BER. COPPER	GOLD	1			REV. B							
2	INSULATOR	TEFLON	NATURAL	1			SIZE A							
1	BODY	BRASS	GOLD	1			SCALE NA							
				UNLESS OTHERWISE SPECIFIED TOLERANCES FOR INCHES ARE: .020 - .315 = ± 0.007" .315 - 1.180 = ± 0.015" 1.180 - 4.724 = ± 0.020"	DO NOT SCALE DRAWING									