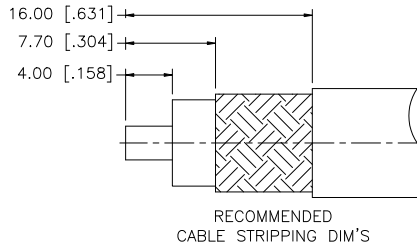
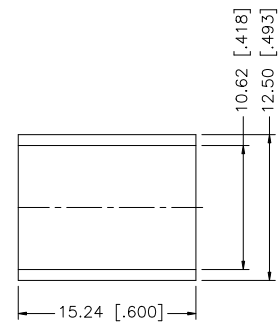
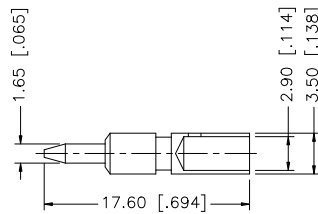
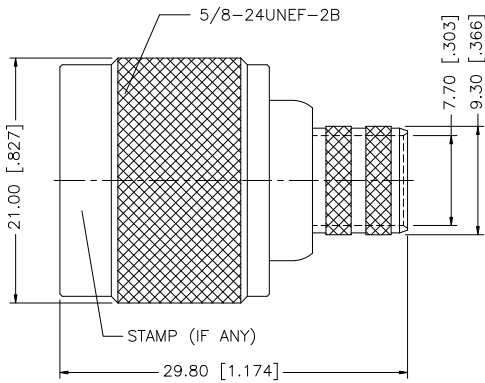


REV.	DATE	ECR NO.	DESCRIPTION
A	02/08/03	-	UPDATE DRAWING FORMAT
B	02/23/06	-	MODIFY FERRULE DIAMETERS
C	05/22/06	-	MODIFY FERRULE LENGTH
D	05/27/08	100021	REVISE CONTACT PIN (ITEM 5) PLATING TO "GOLD"



NOTE:

1. CRIMPED FERRULE HEX CRIMP SIZE .429"
2. CRIMPED CONTACT PIN HEX CRIMP SIZE .118"

DESCRIPTION	MATERIAL	FINISH	QTY	DO NOT SCALE DRAWING	CAD FILE	DWG. NO.	REV.	SIZE	SCALE		
8											
7											
6	FERRULE	COPPER	NEXCOTE	1							
5	CONTACT PIN	BRASS	GOLD	1							
4	RETAINER RING	SUS 304	NATURAL	1							
3	GASKET	SILICONE	RED	1							
2	INSULATOR	TEFLON	NATURAL	1							
1	SHELL/BODY	BRASS	NEXCOTE	1							
				<small>UNLESS OTHERWISE SPECIFIED DIMENSIONS ARE IN MILLIMETERS. DIMENSIONS IN [] ARE IN INCHES AND FOR CUSTOMER REFERENCE ONLY.</small> <small>TOLERANCES FOR MILLIMETERS ARE:</small> 0.5 - 8mm ± 0.20mm 8 - 30mm ± 0.40mm 30 - 120mm ± 0.50mm <small>TOLERANCES FOR INCHES ARE:</small> .020 - .315 = ± 0.007" .315 - 1.180 = ± 0.015" 1.180 - 4.724 = ± 0.020"		APPROVALS DRAWN G.R.S. DATE 05/27/08 CHECKED ISSUED SHEET 1 OF 1		Amphenol Connex PART DESCRIPTION N CRIMP PLUG (FOR LMR400, B9913 CABLE) PART NO. 172102H243			
					C:/172/172102H243.DWG	172102H243.DWG	D	A	NA		