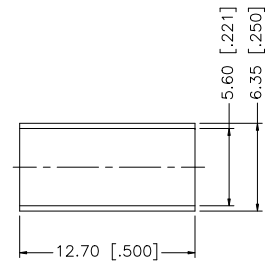
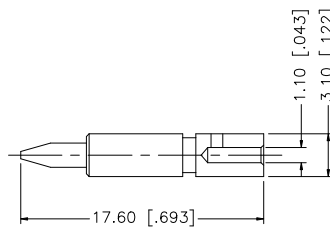
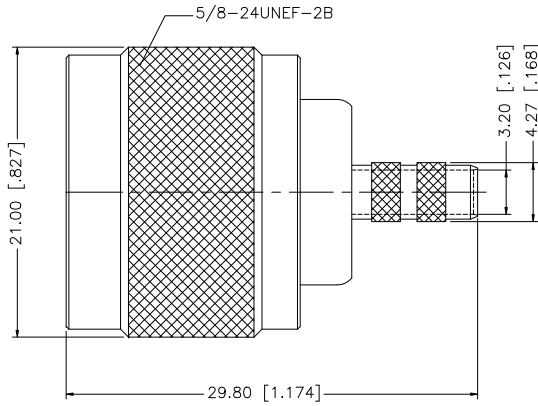
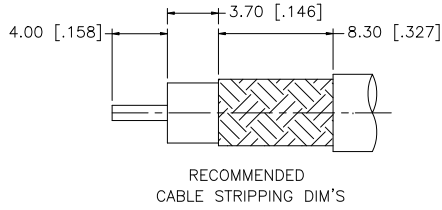


REV.	DATE	ECR NO.	DESCRIPTION
A	01/30/04	-	UPDATE DRAWING FORMAT
B	03/03/09	-	REVISE NOTE 2 - HEX CRIMP TO .100"



NOTES:

1. CRIMPED FERRULE HEX CRIMP SIZE .213" [5.41]
2. CRIMPED CONTACT PIN HEX CRIMP SIZE .100" [2.54]

				APPROVALS	DATE	Amphenol Connex					
8				DRAWN	GRS					03/03/09	N CRIMP PLUG (FOR RG-55/U, 142A/U, 223/U, 400/U)
7				CHECKED			172142				
6				ISSUED							172142
5				SHEET	1 OF 1		172142				
4	FERRULE	COPPER	NEXCOTE	1	172142.DWG						
3	CONTACT PIN	BRASS	GOLD	1					REV. B SIZE A SCALE NA		
2	INSULATOR	PTFE	NATURAL	1	172142.DWG						
1	BODY	BRASS	NEXCOTE	1					172142.DWG		
DESCRIPTION MATERIAL FINISH QTY				DO NOT SCALE DRAWING		CAD FILE		C:/172/172142.DWG			

UNLESS OTHERWISE SPECIFIED DIMENSIONS ARE IN MILLIMETERS. DIMENSIONS IN [] ARE IN INCHES AND FOR CUSTOMER REFERENCE ONLY.

UNLESS OTHERWISE SPECIFIED TOLERANCES FOR MILLIMETERS ARE:
0.5 - 8mm ± 0.20mm
8 - 30mm ± 0.40mm
30 - 120mm ± 0.50mm

UNLESS OTHERWISE SPECIFIED TOLERANCES FOR INCHES ARE:
.020 - .315 = ± 0.007"
.315 - 1.180 = ± 0.015"
1.180 - 4.724 = ± 0.020"