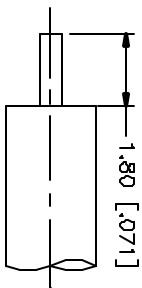
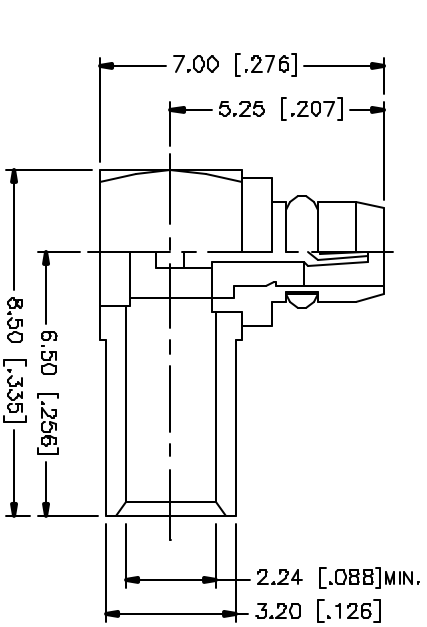
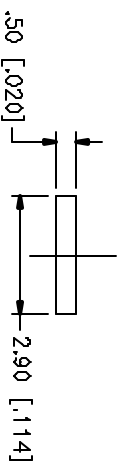
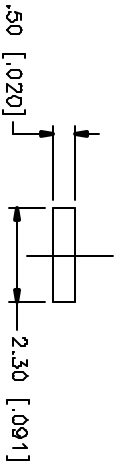


REV.	DATE	DESCRIPTION
A	05/01/04	UPDATE DRAWING FORMAT



RECOMMENDED CABLE STRIPPING DIM'S.



NOTE:

1. CONTACT PIN TO SOLDER

REV.	DATE	DESCRIPTION
B		
7		
6		
5		
4		
3		
2		
1		

DESCRIPTION	MATERIAL	FINISH	QTY
COVER	BRASS	GOLD	1
INSULATOR	TEFLON	NATURAL	1
RETAINER RING	BER. COPPER	GOLD	1
CONTACT PIN	BRASS	GOLD	1
INSULATOR	TEFLON	NATURAL	1
BODY	BRASS	GOLD	1

UNLESS OTHERWISE SPECIFIED DIMENSIONS ARE IN MILLIMETERS AND DECIMALS IN INCHES AND FOR DIMENSIONAL TOLERANCES UNLESS OTHERWISE SPECIFIED.

UNLESS OTHERWISE SPECIFIED TOLERANCES FOR MILLIMETERS ARE:  
 0.5 - .30mm ± 0.20mm  
 .30 - 12.0mm ± 0.50mm

UNLESS OTHERWISE SPECIFIED TOLERANCES FOR INCHES ARE:  
 .020 - .315 = ± 0.007"  
 .315 - 1.180 = ± 0.015"  
 1.180 - 4.724 = ± 0.020"

DO NOT SCALE DRAWING

APPROVALS	DATE
DRAWN G.R.S.	05/01/04
CHECKED	
INSULATED	
BRIST 1 OF 1	

APP. FILE C:/262/262113.DWG

PART DESCRIPTION	PART NO.
MMCX R/A SEMI-RIGID PLUG (FOR .085", .086")	262113

DWG. NO. 262113.DWG REV. A SIZE A SCALE NA

**Amphenol Connex**

MMCX R/A SEMI-RIGID PLUG (FOR .085", .086")

262113