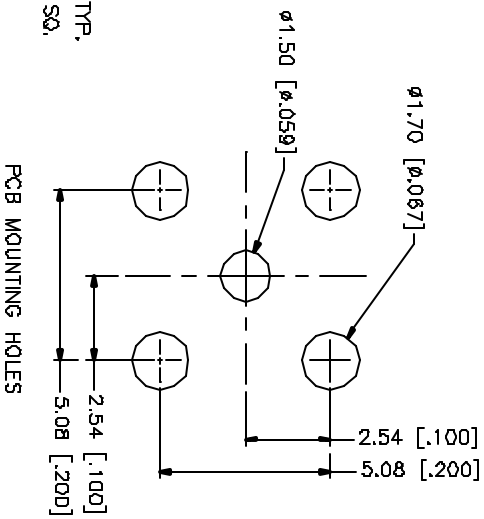
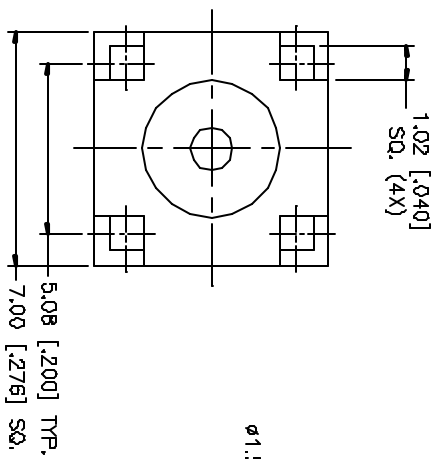
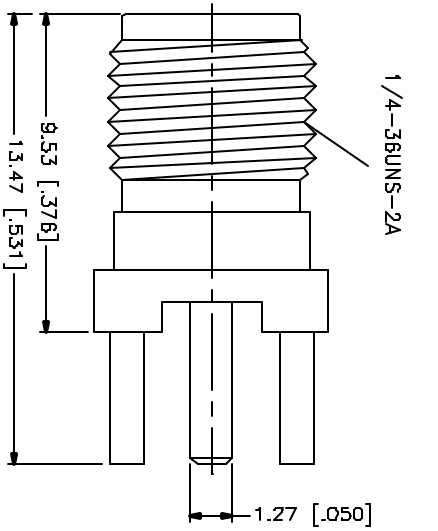


| REV. | DATE     | DESCRIPTION                   |
|------|----------|-------------------------------|
| A    | 04/31/03 | UPDATE DRAWING FORMAT         |
| B    | 11/29/04 | MODIFY FLANGE TO 7.0mm SQUARE |



| B | DESCRIPTION | MATERIAL    | FINISH  | QTY |
|---|-------------|-------------|---------|-----|
| 7 |             |             |         |     |
| 6 |             |             |         |     |
| 5 | RING        | BRASS       | GOLD    | 1   |
| 4 | INSULATOR   | TEFLON      | NATURAL | 1   |
| 3 | CONTACT PIN | BER. COPPER | GOLD    | 1   |
| 2 | INSULATOR   | TEFLON      | NATURAL | 1   |
| 1 | BODY        | BRASS       | GOLD    | 1   |

| APPROVALS    | DATE     |
|--------------|----------|
| DRAWN G.R.S. | 11/29/04 |
| CHECKED      |          |
| ASSEMBLED    |          |
| BUILT 1 OF 1 |          |

| PART DESCRIPTION                  | PART NO. |
|-----------------------------------|----------|
| SMA P.C.B JACK<br>(EXTENDED LEGS) | 1 32134  |

| DATE       | REV. | SIZE | SCALE |
|------------|------|------|-------|
| 132134.DWG | B    | A    | NA    |

| UNLESS OTHERWISE SPECIFIED, DIMENSIONS ARE IN MILLIMETERS (DIMENSIONS IN [ ] ARE IN INCHES AND ARE CUSTOMER REFERENCE ONLY). |
|--|
| UNLESS OTHERWISE SPECIFIED, DIMENSIONS FOR MATERIALS ARE:  |
| 0.15 - BRONZE ± 0.25mm   |
| 0 - 30mm ± 0.40mm  |
| 30 - 125mm ± 0.50mm  |
| UNLESS OTHERWISE SPECIFIED, DIMENSIONS FOR FINISH ARE:   |
| .020 - .315 ± 0.0075   |
| .315 - 1.180 ± 0.015   |
| 1.180 - 4.724 ± 0.020  |
| DO NOT SCALE DRAWING   |

**Amphenol Connex**

SMA P.C.B JACK  
(EXTENDED LEGS)

1 32134

132134.DWG

REV. B

SIZE A

SCALE NA