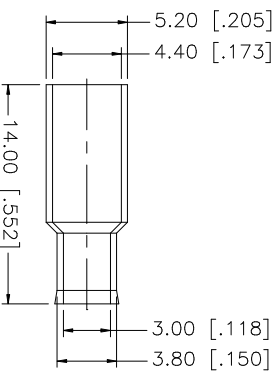
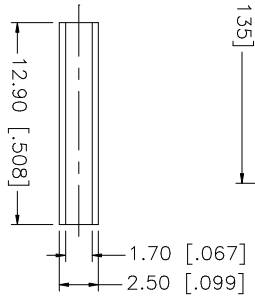
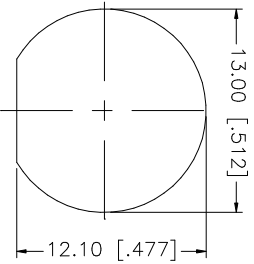
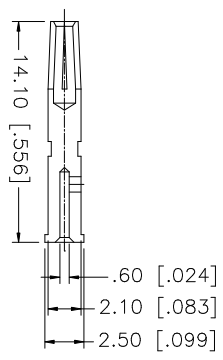
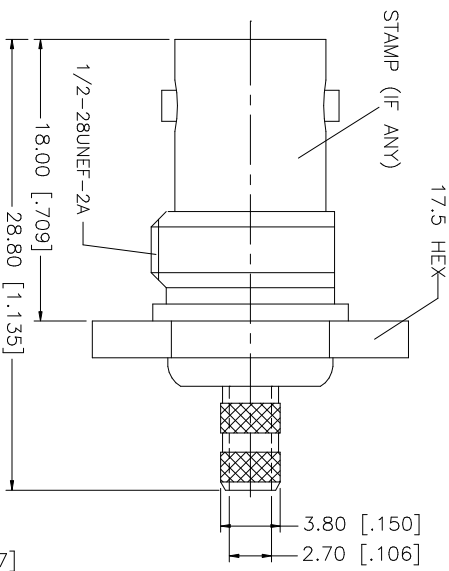
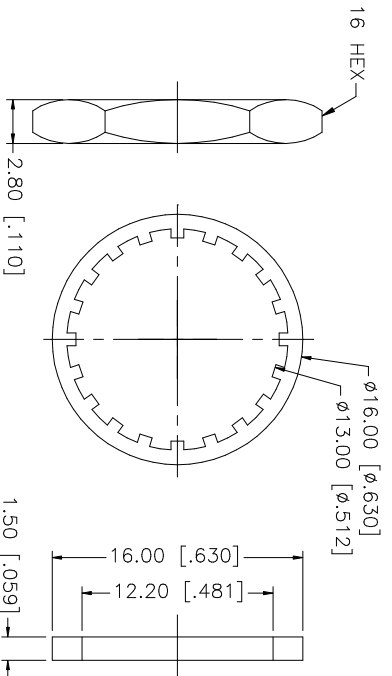
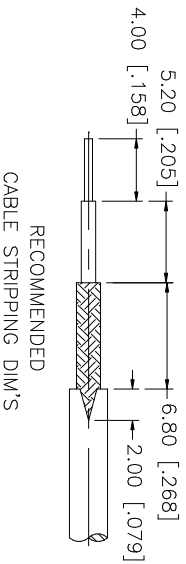


REV.	DATE	DESCRIPTION
A	06/05/03	UPDATE DRAWING FORMAT



CRIMP NOTES:

1. CRIMPED FERRULE HEX CRIMP SIZE .178"
2. CRIMPED CONTACT PIN HEX CRIMP SIZE .068"
3. MAX. PANEL THICKNESS = 3.5mm

DESCRIPTION	MATERIAL	FINISH	QTY	UNLESS OTHERWISE SPECIFIED DIMENSIONS ARE IN MILLIMETERS, DIMENSIONS IN [] ARE IN INCHES AND FOR CUSTOMER REFERENCE ONLY.	APPROVALS	DATE	PART DESCRIPTION			
9 FERRULE	BRASS	NICKEL	1	UNLESS OTHERWISE SPECIFIED DIMENSIONS ARE IN MILLIMETERS, DIMENSIONS IN [] ARE IN INCHES AND FOR CUSTOMER REFERENCE ONLY. TOLERANCES FOR MILLIMETERS ARE: 0.5 - 8mm ± 0.20mm 8 - 30mm ± 0.40mm 30 - 120mm ± 0.50mm	DRAWN G.R.S.	06/05/03	BNC BULKHEAD CRIMP JACK (FOR RG-174/U, 188A/U, 316/U CABLE)			
8 SLEEVE	DELRIN	NATURAL	1							
7 CONTACT PIN	PHOS. BRONZE	GOLD	1							
6 HEX NUT	BRASS	NICKEL	1							
4 LOCK WASHER	BRASS	NICKEL	1							
3 GASKET	RUBBER	NICKEL	1							
2 INSULATOR	DELRIN	NATURAL	1	UNLESS OTHERWISE SPECIFIED DIMENSIONS ARE IN MILLIMETERS, DIMENSIONS IN [] ARE IN INCHES AND FOR CUSTOMER REFERENCE ONLY. TOLERANCES FOR INCHES ARE: .020 - .315 = ± 0.007" .315 - 1.180 = ± 0.015" 1.180 - 4.724 = ± 0.020"	CAD FILE C:/112/112234.DWG	DWG. NO. 112234.DWG	REV. Q	SIZE A	SCALE NA	
1 BODY	BRASS	NICKEL	1	DO NOT SCALE DRAWING						

Amphenol **Comnex**

BNC BULKHEAD CRIMP JACK
(FOR RG-174/U, 188A/U, 316/U CABLE)

112234