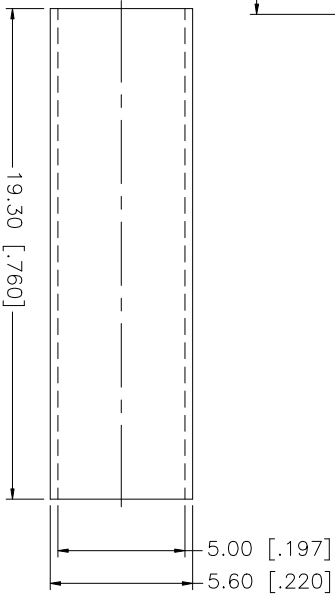
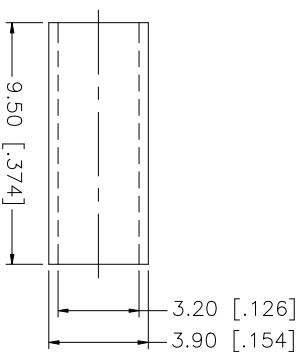
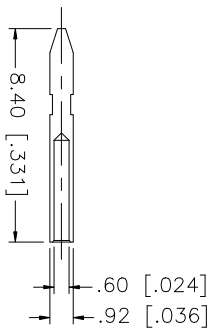
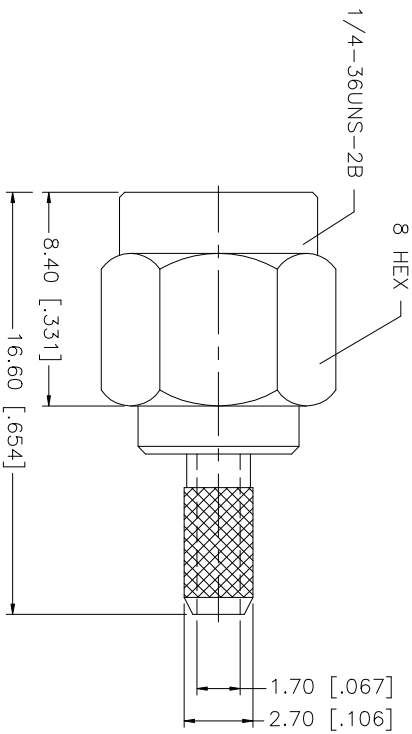
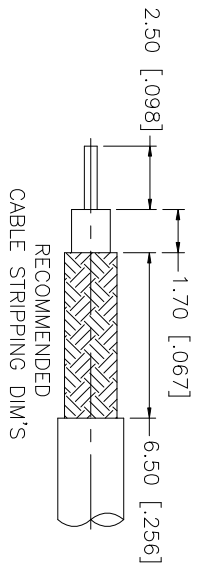


REV.	DATE	DESCRIPTION
NC	02/04/03	UPDATE DRAWING FORMAT



NOTE:  
1. CRIMPED FERRULE  
HEX CRIMP SIZE .128"

QTY	FINISH	MATERIAL	DESCRIPTION
1	GOLD	BRASS	SHELL/BODY
1	NATURAL	TEFLON	INSULATOR
1	RED	SILICONE	GASKET
1	GOLD	BRASS	CONTACT PIN
1	GOLD	COPPER	FERRULE
			HEAT SHRINK TUBING

APPROVALS	DATE
DRAWN G.R.S.	02/04/03
CHECKED	
ISSUED	
SHEET 1 OF 1	

UNLESS OTHERWISE SPECIFIED DIMENSIONS ARE IN MILLIMETERS. DIMENSIONS IN [ ] ARE IN INCHES AND FOR CUSTOMER REFERENCE ONLY. TOLERANCES FOR MILLIMETERS ARE:
0.5 - 8mm ± 0.20mm
8 - 30mm ± 0.40mm
30 - 120mm ± 0.50mm
UNLESS OTHERWISE SPECIFIED DIMENSIONS ARE IN INCHES. TOLERANCES FOR INCHES ARE:
.020 - .315 = ± 0.007"
.315 - 1.180 = ± 0.015"
1.180 - 4.724 = ± 0.020"

DO NOT SCALE DRAWING
----------------------

CAD FILE	DWG. NO.	REV.	NC	SIZE	SCALE
C:/132/132114.DWG	132114.DWG			A	NA

**Amphenol Connex**

PART DESCRIPTION  
SMA CRIMP PLUG  
(RG-174/U, 188A/U, 316/U)

PART NO. 132114