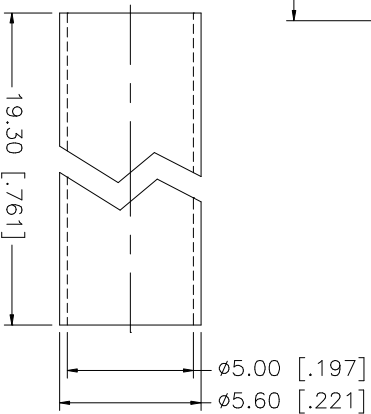
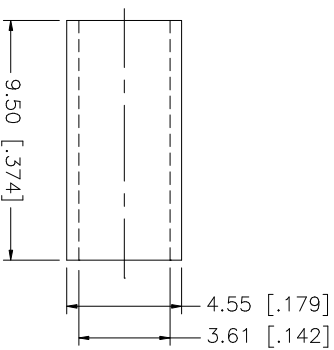
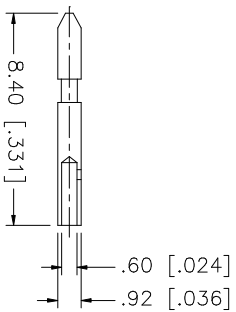
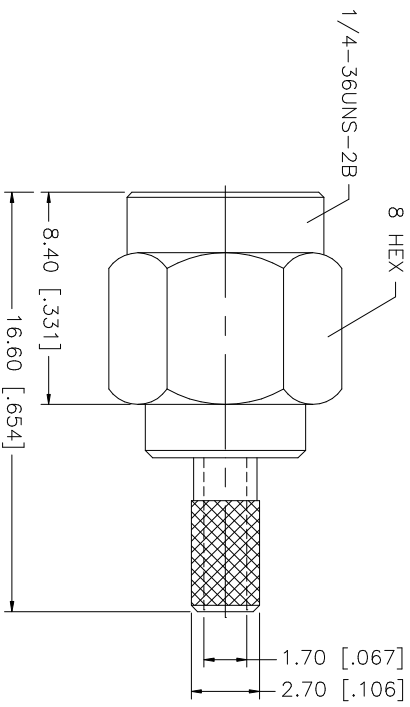
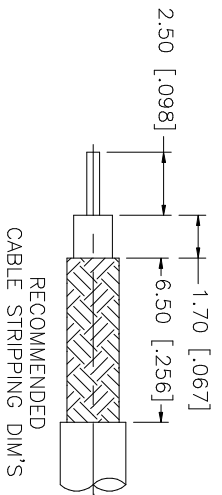


REV.	DATE	DESCRIPTION
D	11/08/99	UPDATE STRIPPING DIM'S
E	01/23/03	REFORMAT DRAWING/ UPDATE FERRULE DIMS



- NOTE:
1. CRIMPED FERRULE
HEX CRIMP SIZE .151"
 2. CONTACT PIN TO SOLDER

QTY	FINISH	MATERIAL	DESCRIPTION
1	GOLD	COPPER	HEAT SHRINK TUBE
1	GOLD	BRASS	FERRULE
1	RED	SILICONE	CONTACT PIN
1	NATURAL	BER, COPPER	GASKET
1	NATURAL	TEFLON	INSULATOR
1	GOLD	BRASS	SHELL/BODY

UNLESS OTHERWISE SPECIFIED DIMENSIONS ARE IN MILLIMETERS. DIMENSIONS IN [] ARE IN INCHES AND FOR CUSTOMER REFERENCE ONLY.	UNLESS OTHERWISE SPECIFIED TOLERANCES FOR MILLIMETERS ARE:	UNLESS OTHERWISE SPECIFIED TOLERANCES FOR INCHES ARE:
0.5 - 8mm ± 0.20mm	8 - 30mm ± 0.40mm	.020 - .315 = ± 0.007"
30 - 120mm ± 0.50mm		.315 - 1.180 = ± 0.015"
		1.180 - 4.724 = ± 0.020"

APPROVALS	DATE
DRAWN G.R.S.	01/23/03
CHECKED	
ISSUED	
SHEET 1 OF 1	

CAD FILE	DWG. NO.	REV.	SIZE	SCALE
C:/132/132178.DWG	132178.DWG	E	A	NA

PART NO.	PART DESCRIPTION
132178	SMA CRIMP PLUG (FOR RG-316/U DOUBLE BRAID CABLE)