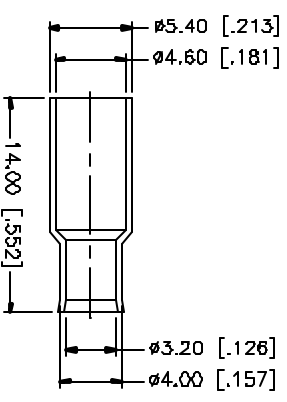
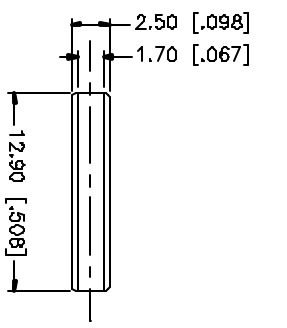
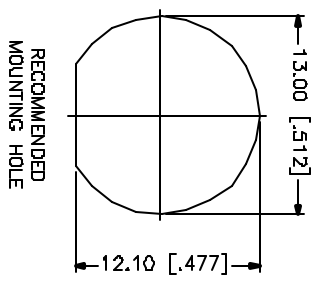
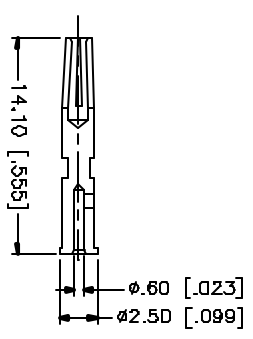
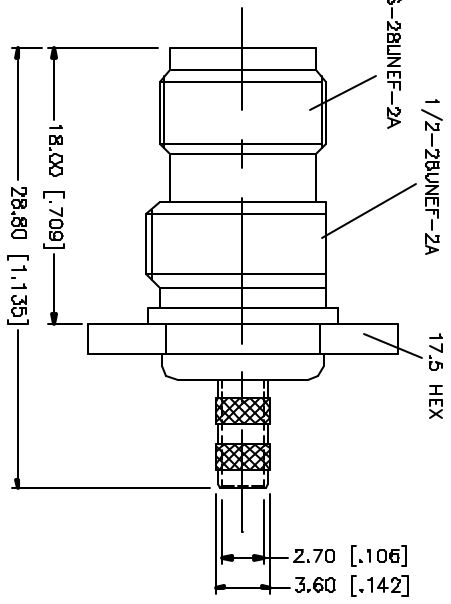
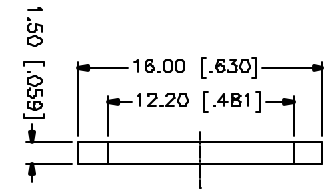
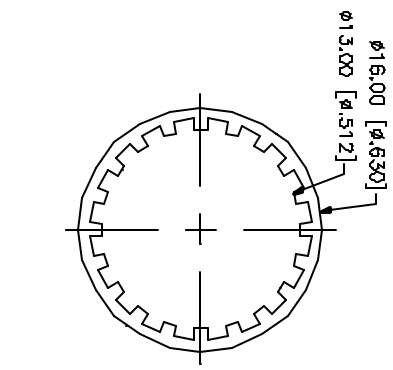
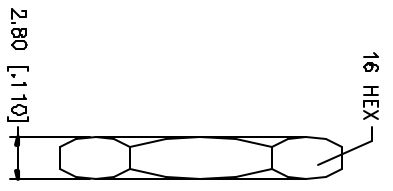
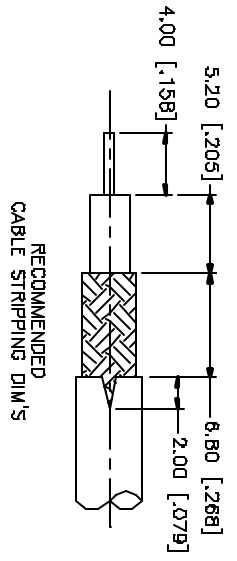


REV.	DATE	DESCRIPTION
A	03/20/05	UPDATE DRAWING FORMAT



QTY	FINISH	MATERIAL	DESCRIPTION
1	NICKEL	COPPER	FERRULE
1	NATURAL	DELFIN	INSULATOR
1	NICKEL	BRASS	HEX NUT
1	NICKEL	BRASS	LOCK WASHER
1	RED	SILICONE	GASKET
1	GOLD	BER. COPPER	CONTACT PIN
1	NATURAL	DELFIN	INSULATOR
1	NICKEL	BRASS	BODY

APPROVALS	DATE
G.R.S.	03/20/05

CAD FILE	DWG. NO.	REV.	SIZE	SCALE
C:/122/122358.DWG	122358.DWG	A	A	NA

PART DESCRIPTION	PART NO.
TNC BULKHEAD GRIMP JACK (FOR RG-174/U, 316/U DOUBLE BRAID)	122358

MASS DIMENSIONS	MASS DIMENSIONS
MASS DIMENSIONS PROVIDED FOR REFERENCE ONLY. DIMENSIONS FOR MANUFACTURING ARE TOLERANCES FOR MANUFACTURING ARE:	MASS DIMENSIONS PROVIDED FOR REFERENCE ONLY. DIMENSIONS FOR MANUFACTURING ARE:
0.5 - 30mm ± 0.20mm	30 - 120mm ± 0.50mm
MASS DIMENSIONS PROVIDED FOR REFERENCE ONLY. DIMENSIONS FOR MANUFACTURING ARE:	MASS DIMENSIONS PROVIDED FOR REFERENCE ONLY. DIMENSIONS FOR MANUFACTURING ARE:
.020 - .312 ± 0.001"	.312 - 1.180 ± 0.015"
1.180 - 4.724 ± 0.020"	

Amphenol Connex