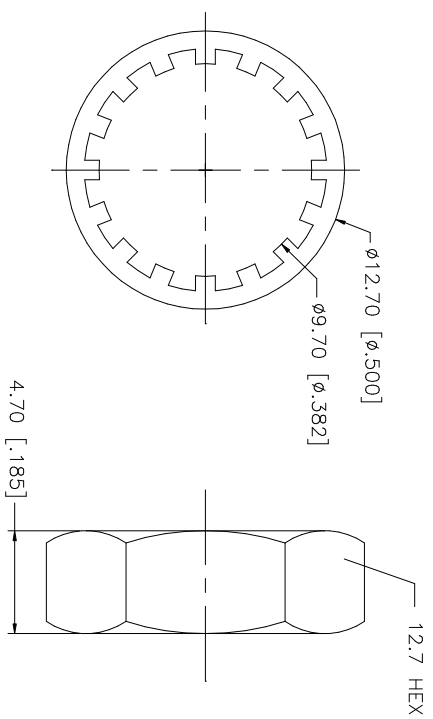
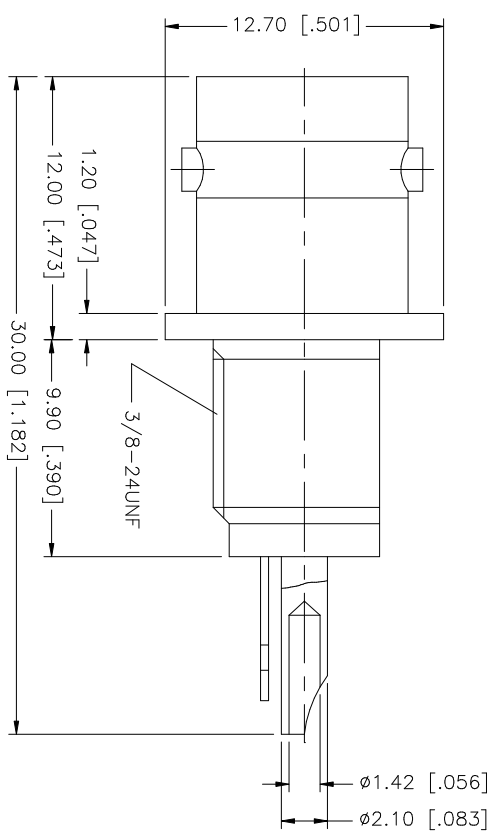
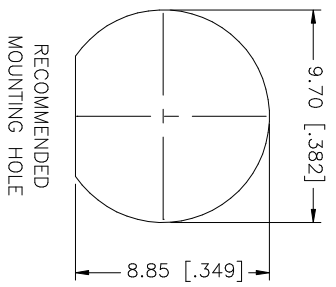


REV.	DATE	DESCRIPTION
A	11/19/03	UPDATE DRAWING FORMAT



NOTE:

1. MAX. PANEL THICKNESS = 3.2mm
2. RECOMMENDED TORQUE: A MAXIMUM
- 12 INCH-LBS MAY BE APPLIED ON HEX NUT WHEN MOUNTING CONNECTOR IN PANEL

UNLESS OTHERWISE SPECIFIED DIMENSIONS ARE IN MILLIMETERS DIMENSIONS IN INCHES ARE FOR CUSTOMER REFERENCE ONLY. TOLERANCES FOR MILLIMETERS ARE:	UNLESS OTHERWISE SPECIFIED DIMENSIONS ARE IN INCHES DIMENSIONS IN MILLIMETERS ARE FOR CUSTOMER REFERENCE ONLY. TOLERANCES FOR INCHES ARE:	APPROVALS	DATE	PART DESCRIPTION
0.3 - 8mm ± 0.20mm	0.020 - .315 ± 0.0007"	DRAWN	11/19/03	<p><b>Amphenol Connex</b></p> <p>BNC BULKHEAD RECEPTACLE ISOLATED JACK - 50ohm</p>
8 - 30mm ± 0.40mm	.315 - 1.180 ± 0.015"	CHECKED		
30 - 120mm ± 0.50mm	1.180 - 4.724 ± 0.020"	ISSUED		
		SHEET	1 OF 1	
DO NOT SCALE DRAWING		CAD FILE	C:/112/112431.DWG	PART NO.
		DWG. NO.	112431.DWG	112431
		REV.	A	SIZE
				A
				SCALE
				N/A