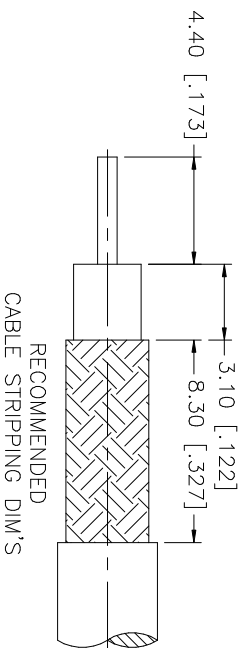
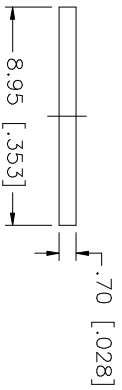
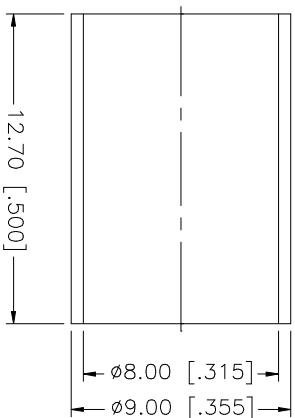
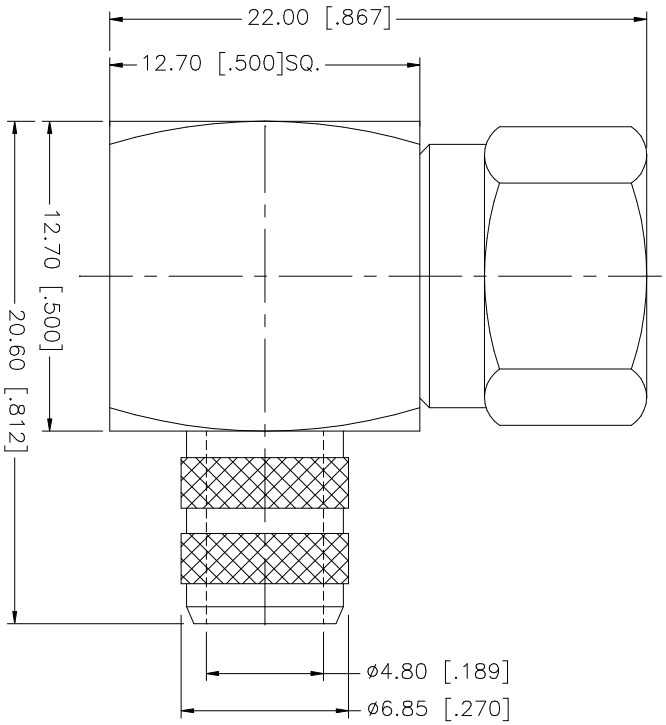


REV.	DATE	DESCRIPTION
NC	12/06/99	INITIAL RELEASE
A	01/13/00	ADD CABLE SIZE TO DESCRIPTION
B	09/26/05	UPDATE DRAWING FORMAT



NO.	DESCRIPTION	MATERIAL	FINISH	QTY
1	BODY	BRASS	NICKEL	1
2	INSULATOR	TEFLON	NATURAL	1
3	CONTACT PIN	BRASS	GOLD	1
4	FERRULE	COPPER	NICKEL	1
5				
6				
7				
8				

UNLESS OTHERWISE SPECIFIED DIMENSIONS ARE IN INCHES AND FOR CUSTOMER REFERENCE ONLY.
 UNLESS OTHERWISE SPECIFIED TOLERANCES FOR MILLIMETERS ARE:
 0.5 - 8mm ± 0.20mm
 8 - 30mm ± 0.40mm
 30 - 120mm ± 0.50mm
 UNLESS OTHERWISE SPECIFIED TOLERANCES FOR INCHES ARE:
 .020 - .315 = ± 0.007"
 .315 - 1.180 = ± 0.015"
 1.180 - 4.724 = ± 0.020"

DO NOT SCALE DRAWING

APPROVALS	DATE
DRAWN G.R.S.	09/26/05
CHECKED	
ISSUED	
SHEET 1 OF 1	

CAD FILE C:/222/222164.DWG

DWG. NO. 222164.DWG

REV. B

SIZE A

SCALE NA

Amphenol Connex

PART DESCRIPTION
 F R/A CRIMP PLUG
 (FOR RG-6/U CABLE)

PART NO. 222164