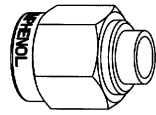


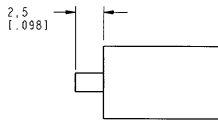
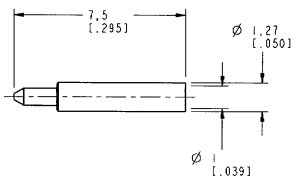
NOTES:

- I. MATERIALS OF CONSTRUCTION:
- BODY & SHELL = BRASS, GOLD PLATED
- CONTACT PIN = BRASS, GOLD PLATED
- INSULATOR = TEFLON, MIL-P-19468
- RETAINER RING = B2Cu, NATURAL
- GASKET = SILICONE RUBBER, COLOR RED

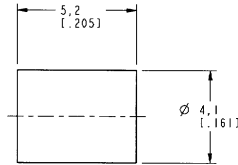
901-9868-RFX		REVISIONS			
DRAWING NO.	REV	DESCRIPTION	DATE	ECO	APPR
THIRD ANGLE PROJ.	A	RELEASE TO MFG.	2/2/01	43661	CPM



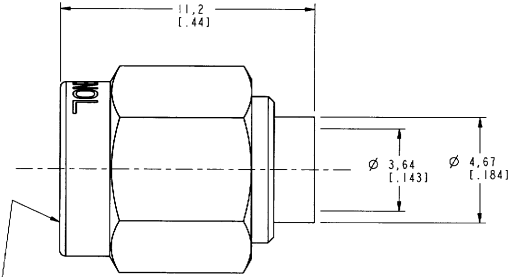
SCALE 3.000



RECOMMENDED CABLE STRIPPING DIMENSIONS
SCALE 3.000



.250-36UNS-2B INTERNAL THREAD



CUSTOMER OUTLINE DRAWING
FOR REFERENCE ONLY

UNLESS OTHERWISE SPECIFIED, DIMENSIONS ARE IN INCHES AND TOLERANCES ARE: 0.5 - 6mm ±0.2mm 6 - 30mm ±0.4mm 30 - 120mm ±0.6mm	MATERIAL REFERENCE EAR 907698-0 GENB 901-9868-RFX.ASSY	DRAWN C. McGRATH DATE 1/24/01	TITLE SMA SOLDER PLUG FOR .141 DIA SEMI-RIGID CABLE	Amphenol Amphenol Corporation Communication and Network Products Division Danbury, CT U.S.A. 06810 SCALE: 6.0:1 SHEET 2 OF 2		
		ENGINEER O. BARTHELMES DATE 1/24/01			APPROVED DATE 1/31/01	
NOTICE - These drawings, specifications, or other data (1) are, and remain the property of Amphenol Corp. (2) must be returned upon request; and (3) are confidential and not to be disclosed to any person other than those to whom they are given by Amphenol Corp. The furnishing of these drawings, specifications, or other data by Amphenol Corp., or to any other person for any purpose is not to be regarded by implication or otherwise in any manner, licensing, granting rights or permitting such holder or any other person to manufacture, use or sell any product, process or design, patented or otherwise, that may in any way be related to or disclosed by said drawings, specifications, or other data.		CAD FILE 1:\SMA\901-9868-RFX	CODE ID 74868	DWG SIZE B	DRAWING NO. 901-9868-RFX	REV A