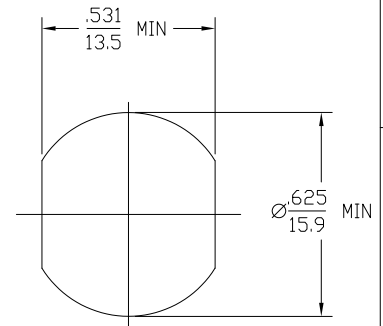
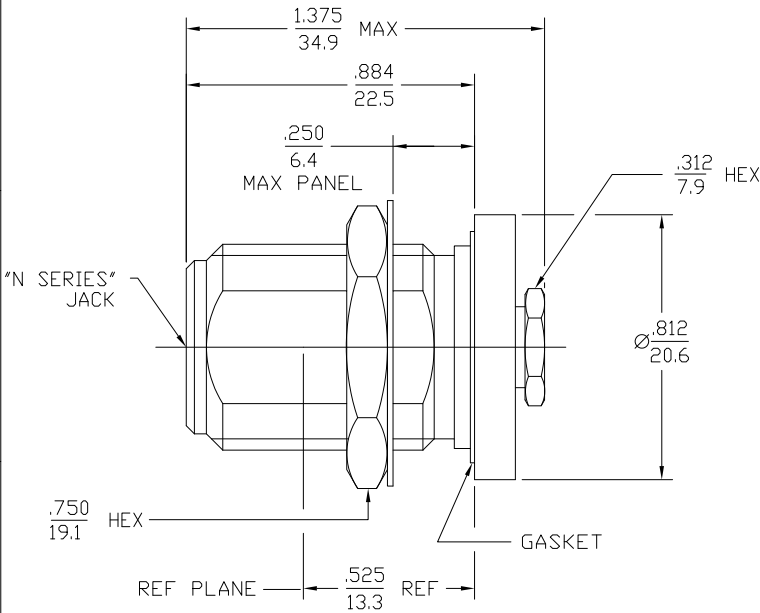


THIS DRAWING IS UNPUBLISHED. RELEASED FOR PUBLICATION
 © COPYRIGHT BY TYCO ELECTRONICS CORPORATION. ALL RIGHTS RESERVED.

DESIGNED FOR USE WITH RG-141/U	
CABLE ENTRY DIAMETER MINIMUM	
COLLAR	.122
CLAMP NUT	.220
CONTACT	.042

REVISIONS				
P	LR	DESCRIPTION	DATE	APPD
B		REV PER EDD 07-027471	1/16/2008	DW JL



1057138-1
PART NUMBER

COMPONENT	MATERIAL	FINISH
HOUSING	BRASS PER ASTM-B-16, HALF HARD	NICKEL PLATE PER QQ-N-290
CLAMP NUT	PTFE FLUOROCARBON PER ASTM-D-1457	N/A
MOUNTING NUT	BRASS PER ASTM-B-16, HALF HARD	GOLD PLATE PER MIL-G-45204
DIELECTRIC	PHOSPHOR BRONZE PER QQ-B-750, GRADE B2 OR TIN BRASS PER ASTM-B-591	NICKEL PLATE PER QQ-N-290
CENTER CONTACT	BRASS PER ASTM-B-16, HALF HARD	GOLD PLATE PER MIL-G-45204
LOCKWASHER	SILICONE RUBBER PER ZZ-R-765	N/A
COLLAR		
GASKET		

THIS DRAWING IS A CONTROLLED DOCUMENT.		DATE: 9/25/79	BY: [Signature]
DIMENSIONS: INCHES		DATE: 10-1-79	BY: [Signature]
OTHER DIMENSIONS: MILLIMETERS		DATE: 10-3-79	BY: [Signature]
MATERIAL: -		DATE: -	BY: -
FINISH: -		DATE: -	BY: -
APPLICATION SPEC: 30-045		DATE: -	BY: -
RIGHT: -		DATE: -	BY: -
CUSTOMER DRAWING		SCALE: 1:1	SHEET: 1 of 1

1057138-1
PART NUMBER