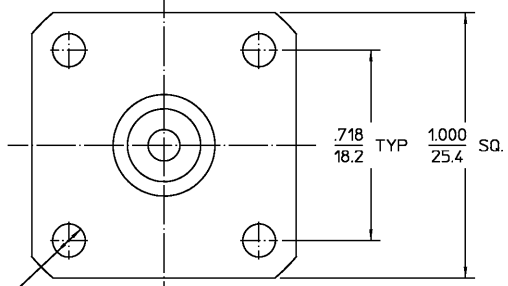
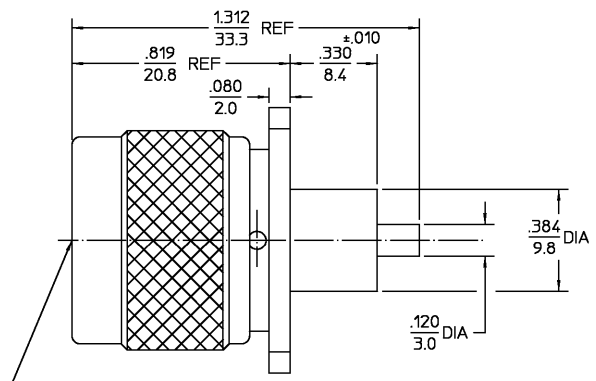


REVISIONS			
REV	DESCRIPTION	DATE	APPROVED
03 <sub>2</sub>	REVISED	DAC 3/22/99	Wbg 3/21/99
B	PER EC 0U20-0615-00	20SEP01	(C-7/1000) 20SEP01



TYPE 'N'  
PLUG

.125  
3.2  
DIA  
(4 PLCS)

HOUSING	BRASS PER ASTM-B-16 HALF HARD	NICKEL PLATE QQ-N-290
COUPLING NUT	TFE FLUOROCARBON PER ASTM-D-1457	N/A
DIELECTRIC	BRASS PER ASTM-B-16, HALF HARD	GOLD PLATE PER MIL-G-45204
CENTER CONTACT	BERYLLIUM COPPER PER ASTM-B-194, ALLOY C17200, CONDITION H	N/A
RETAINING RING	SILICONE RUBBER PER ZZ-R-765	N/A
GASKET		

COMPONENT	MATERIAL	FINISH
-----------	----------	--------

UNLESS OTHERWISE SPECIFIED DIMENSIONS ARE IN INCHES	DRAWN BY R. M. L.	DATE 3/5/73	<b>AMP Incorporated</b> 140 Fourth Avenue Waltham, MA 02451-7599
FRAC. + 1/64	DEC. + .005	ANGLES + °	
CHECKED BY R. M. F.	APPR BY B. W. C.	3/5/73	

THESE DRAWINGS AND SPECIFICATIONS ARE THE PROPERTY OF AMP INTERCONNECT DIV. AND SHALL NOT BE REPRODUCED OR COPIED OR USED IN WHOLE OR IN PART AS THE BASIS FOR THE MANUFACTURE OR SALE OF ITEMS WITHOUT WRITTEN PERMISSION.	USE ASSY PROCEDURE	TITLE TYPE N FLANGE MOUNT PLUG RECEPTACLE - STRAIGHT TERMINAL	
	NO. AP. N/A	SIZE B	CODE IDENT NO. 26805
		SCALE 3:1	3051-1201-10

NOTES:  
1. CAPTURED CENTER CONTACT

.XXX = in  
XX.X = mm

CUSTOMER DRAWING  
AMP PART # 1057279-1  
SHEET 1 OF 1 REV B