

4

3

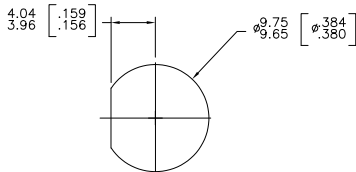
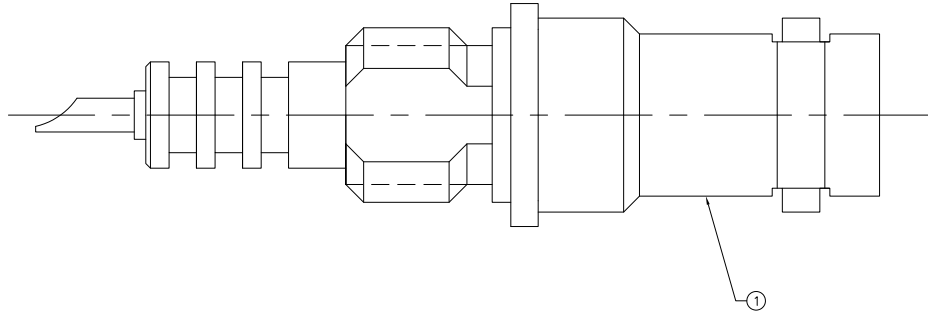
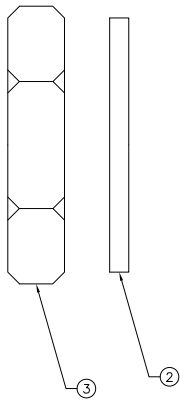
2

1

THIS DRAWING IS UNPUBLISHED. RELEASED FOR PUBLICATION. ALL RIGHTS RESERVED.  
 © COPYRIGHT BY TYCO ELECTRONICS CORPORATION.

LOC	DIST	REVISIONS		
AJ	17	F	LWR	
		F	REV PER ECO 07-030186	08JAN2008 DW JL
		G	ECO-09-001460	02-27-09 AEG JTL

- USE INSTRUCTION SHEET 408-2187.
- ACCOMMODATES 0.79 [.031] TO 4.78 [.188] PANEL THICKNESS.



RECOMMENDED PANED CUTOUT  
SCALE 4:1

.461 oz	1-330249-1	1-329492-1	51531-2	51494-2
.423 oz	9-330249-0	9-329492-0	9-51531-0	51494-1
WEIGHT	③ JAM NUT QTY: 1	② LOCK WASHER QTY: 1	① JACK ASSEMBLY QTY: 1	PART NUMBER

THIS DRAWING IS A CONTROLLED DOCUMENT.		DWG	DESIGNER	DATE	REV	APP'D
DIMENSIONS: mm [INCHES]		D. WALLACE	J. LIPPERT			
TOLERANCES UNLESS OTHERWISE SPECIFIED:		J. LIPPERT	J. LIPPERT			
0 PLC	± .005	TYCO ELECTRONICS CORPORATION		Harrisburg, PA 17105-3608		
1 PLC	± .002	SHV BULKHEAD SOLDER JACK		RESTRICTED TO		
2 PLC	± .001	APPLICATION SPEC: ---		SIZE: A2		CAGE CODE: 00779
3 PLC	± .0005	WEIGHT: ---		DRAWING NO: C-51494		REV: G
4 PLC	± .0002	FINISH: ---		SCALE: 1:1		SHEET: 1 of 1
ANGLES	± .0001	CUSTOMER DRAWING		SCALE: 1:1		SHEET: 1 of 1

AMP 1471-9 REV 31MAR2000

51494

A