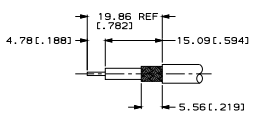
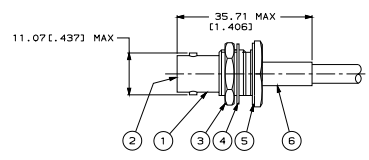
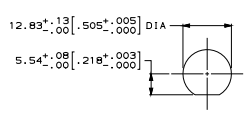


REV	DF	XO	#	ZONE	LN	DESCRIPTION	DATE	APPD
U	REV	PER	ECO	06-20590	CT		8-29-06	BM



RECOMMENDED STRIP LENGTH



SUGGESTED PANEL CUTOUT

1. MAX PANEL THICKNESS: 6.10 (.240)  
 2. SEE I.S. 1914-3

220009-1	RG-174/U & 188/U	TYCO 6-331693-2	-	21427-4	9-329631-0	9-329632-0	329633	1883188-1	1-331368-2	1883623-1	6-331693-2
OBsolete	69477-2	TWISTED PAIR (SPECIAL)	-	21427-4	1-329631-2	1-329632-2	329633	2-329461-7	3-331368-9	227461-1	3-331693-0
OBsolete	69477-1	RG-174/U	AMP & 2-331693-9	-	329631	329632	329633	50428-1	1-331368-2	1-331786-0	2-331693-8
OBsolete	69477-2	IBM 5353914 & BRAND REX T209	-	226171-2	1-329631-2	1-329632-2	329633	2-329049-4	2-331368-2	227461-1	2-331693-8
OBsolete	69477-2	RAYCHEM 752441312	AMP & 2-331693-7	-	329631	329632	329633	329461	2-331368-3	1-331786-1	2-331693-7
OBsolete	69477-2	TWISTED PAIR (SPECIAL)	AMP & 2-331693-6	21427-4	329631	329632	329633	329461	2-331368-3	1-331786-1	2-331693-6
OBsolete	69477-2	IBM 5353914 & BRAND REX T209A	-	226171-2	329631	329632	329633	2-329049-1	2-331368-2	1-331786-7	2-331693-5
SUPERSEDED BY 225398-6	69478-1	RG-142/U, 142A/U & 142B/U	00779 M39012/1980006 YY WW	-	1-329631-9	329632	329633	329099	2-331368-4	331786	1-331693-8
SUPERSEDED BY 225398-3	69478-1	RG-55/U, 55A/U, 55B/U & 223/U	00779 M39012/1980004 YY WW	-	1-329631-9	329632	329633	329099	2-331368-3	331786	1-331693-6
SUPERSEDED BY 225398-9	69477-2	RG-180/U, 180A/U & 195/U	AMP & 1-331693-4	-	329631	329632	329633	329461	1-331368-4	1-331786-1	1-331693-4
SUPERSEDED BY 225398-8	220009-1	RG-179/U & 187/U	AMP & 1-331693-3	21427-4	329631	329632	329633	2-328666-3	1-331368-4	1-331786-1	1-331693-3
	220009-1	RG-174/U & 188/U	AMP & 1-331693-2	21427-4	329631	329632	329633	2-328666-3	1-331368-2	1-331786-1	1-331693-2
	69478-1	RG-58/U, 58A/U, 58B/U & 58C/U	00779 M39012/1980003 YY WW	-	1-329631-9	329632	329633	50427-1	2-331368-3	331786	1-331693-1
	69477-2	AMPHENOL 21-597	AMP & 1-331693-0	-	329631	329632	329633	329461	1-331368-2	1-331786-1	1-331693-0
OBsolete	69477-1	RG-59/U, 59A/U, 59B/U, 62/U, 62A/U & 62B/U	00779 M39012/1980007 YY WW	-	1-329631-9	329632	329633	50428-1	3-331368-9	1-331786-0	331693
USE CRIMPING TOOL	FOR USE WITH CABLE	STAMPING	⑧ TUBING QTY=1	⑦ BUSHING QTY=1	⑥ JAM NUT QTY=1	⑤ LOCK WASHER	④ GASKET QTY=1	③ FERRULE QTY=1	② CONTACT QTY=1	① JACK ASSY QTY=1	ASSY NO

DO NOT SCALE PRINT. UNLESS SPECIFIED DIMENSIONS IN MM (INCHES) TOLERANCES ON: 1. ALL DIM. ±.11(.016) INCHES 2. ALL DIM. ±.005 (0.0005) INCHES

DR 5-7-96 P. ALBRECHT  
 CHK 3/8/90 R.E. ROTH  
 APPD 8/20/90 R.E. ROTH  
 MATERIAL -  
 PRODUCT SPEC 108-12020

AMP Incorporated  
 Harrisburg, PA 17105-3608

**JACK, BULKHEAD, DUAL CRIMP, BNC**

FINISH -  
 WEIGHT -

APPLICATION SPEC  
 SIZE ①  
 SCALE 2:1

CAGE CODE 00779  
 DRAWING NO 331693  
 SHEET 1 OF 1