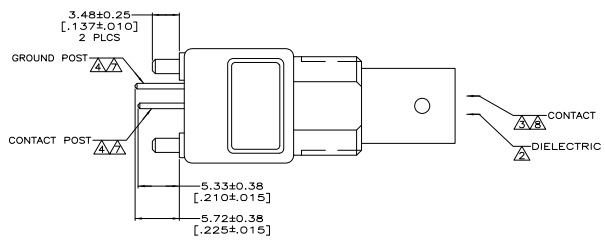
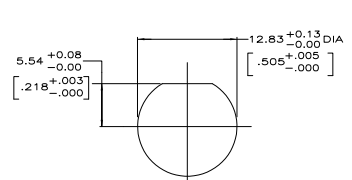
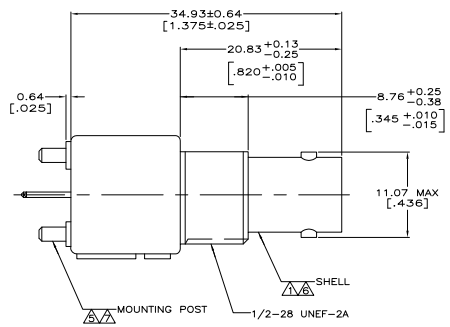
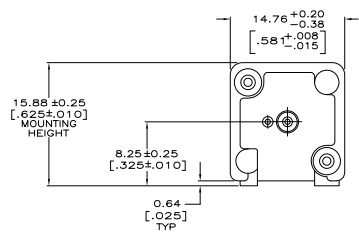


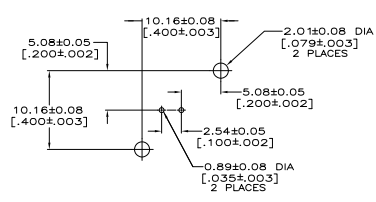
REV	DATE	DESCRIPTION	BY	CHK	APP
AJ 16		REVISIONS			
A		REVISED PER EC 0514-0150-05	306/005	EM	JL



- ▲ ZINC PER QQ-Z-363.
- ▲ POLYMETHYLPENTENE, GENERAL PURPOSE.
- ▲ BERYLLIUM COPPER PER QQ-C-530.
- ▲ BRASS PER ASTM-B-453.
- ▲ BRASS PER ASTM-B-16.
- ▲ NICKEL PLATE PER QQ-N-290, 3.81 μm [.000150] MINIMUM THICK.
- ▲ TIN PLATE PER ASTM-B-545, 3.81 μm [.000150] MINIMUM THICK.
- ▲ GOLD PLATE PER MIL-G-45204, 0.76 μm [.000030] MINIMUM THICK.
- 9. SEE INSTRUCTION SHEET 408-2769.



RECOMMENDED PANEL CUTOUT



PCB CONFIGURATION

5222132-1
PART NUMBER

THIS DRAWING IS A CONTROLLED DOCUMENT.		ALCOSTA	DESIGN	EXPAN	TYSO Electronics Corporation
DRAWING NO. 5222132-1		REV. 16	DATE 05/14/05	BY 306/005	Harrisburg, Pa 17102-3608
DESIGNED BY	DESIGNED DATE	DESIGNED BY	DESIGNED DATE	DESIGNED BY	DESIGNED DATE
DRW. NO. 5222132-1	DRW. DATE 05/14/05	DRW. NO. 5222132-1	DRW. DATE 05/14/05	DRW. NO. 5222132-1	DRW. DATE 05/14/05
SEE NOTES 1-5	SEE NOTES 6-8	CUSTOMER DRAWING	DATE 05/14/05	REV. 16	REV. A