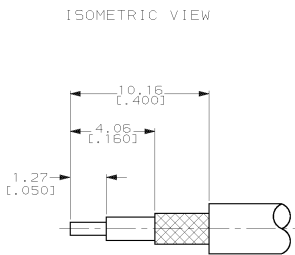
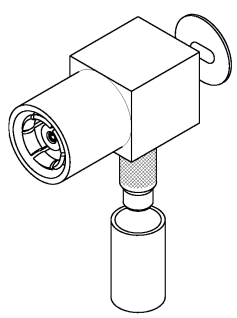
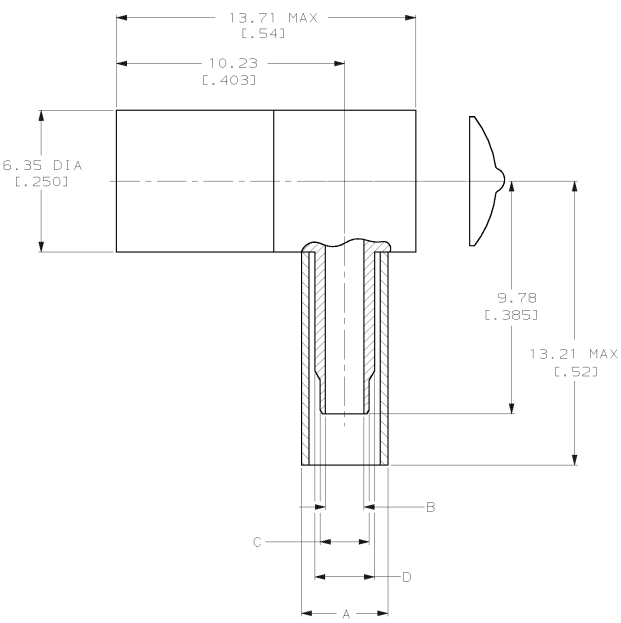


DRAWING MADE IN THIRD ANGLE PROJECTION
 THIS DRAWING IS UNPUBLISHED. RELEASED FOR PUBLICATION
 © COPYRIGHT 19 BY AMP INCORPORATED. ALL INTERNATIONAL RIGHTS RESERVED.

| LOG | DIST | P | F | ZONE | LTR | REVISIONS | DATE | APPD |
|-----|------|---|---|------|-----|----------------------|---------|------|
| AJ | 16 | | | | J | REV PER 0020-0130-00 | 30MAY90 | MO |



RECOMMENDED STRIP LENGTHS
SCALE NTS

- MATERIALS:
 BODY...BRASS PER QQ-B-626
 INNER AND OUTER CONTACTS...
 BERYLLIUM COPPER PER QQ-C-533
 DIELECTRIC...TEFLON PER LP-403
- FINISH:
 BODY AND OUTER CONTACTS...
 GOLD PER MIL-G-45204 OVER
 NICKEL PER QQ-N-290.
 CENTER CONTACT...GOLD PER MIL-G-45204
 AT INTERFACE AND AT SOLDER END; OVER
 NICKEL PER QQ-N-290
- FINISH:
 BODY...NICKEL PER QQ-N-290 OVER
 COPPER PER MIL-C-14550
 OUTER CONTACTS...GOLD PER MIL-G-45204
 OVER NICKEL PER QQ-N-290
 CENTER CONTACT...GOLD PER MIL-G-45204
 AT INTERFACE AND AT SOLDER END; OVER
 NICKEL PER QQ-N-290
- FINISH:
 BODY AND OUTER CONTACT...NICKEL
 PER QQ-N-290 OVER COPPER PER
 MIL-C-14550
 CENTER CONTACT...GOLD PER MIL-C-45204
 AT INTERFACE AND AT SOLDER END; OVER
 NICKEL PER QQ-N-290
- INTERFACE PER MIL-C-39012.
- SEE I.S. SHEET 2987-9

| SUP5D BY | POSITION LETTER | AMP DIE SET | HEX SIZE | DANIELS DIE SET | D DIA | C DIA | B DIA | A DIA | NOTES | CABLE | PART NO |
|----------|-----------------|-------------|----------|-----------------|--------------|--------------|--------------|--------------|-------|-----------------------------------|------------|
| 414002-4 | C | 58483-1 | .151 | HX4-1637 | 2.64 [0.104] | 2.16 [0.085] | 1.70 [0.067] | 4.54 [0.179] | △ | RG 174,188,316 (ALL DBL SHIELDED) | 1-414002-0 |
| | A | 58483-1 | .105 | HX4-1637 | 1.98 [0.076] | 1.37 [0.055] | 0.96 [0.040] | 3.86 [0.152] | △ | RG 178,196 | 414002-9 |
| 414002-8 | A | 58483-1 | .105 | HX4-1637 | 1.98 [0.076] | 1.37 [0.055] | 0.96 [0.040] | 3.86 [0.152] | △ | RG 178,196 | 414002-8 |
| | A | 58483-1 | .105 | HX4-1637 | 1.98 [0.076] | 1.37 [0.055] | 0.96 [0.040] | 3.86 [0.152] | △ | RG 178,196 | 414002-7 |
| 414363-6 | C | 58483-1 | .151 | HX4-1637 | 2.64 [0.104] | 2.16 [0.085] | 1.70 [0.067] | 4.54 [0.179] | △ | RG 174,188,316 (ALL DBL SHIELDED) | 414002-6 |
| | B | 58483-1 | .128 | HX4-1637 | 2.64 [0.104] | 2.16 [0.085] | 1.70 [0.067] | 3.86 [0.152] | △ | RG 174,188,316 | 414002-5 |
| | C | 58483-1 | .151 | HX4-1637 | 2.64 [0.104] | 2.16 [0.085] | 1.70 [0.067] | 4.54 [0.179] | △ | RG 174,188,316 (ALL DBL SHIELDED) | 414002-4 |
| | B | 58483-1 | .128 | HX4-1637 | 2.64 [0.104] | 2.16 [0.085] | 1.70 [0.067] | 3.86 [0.152] | △ | RG 174,188,316 | 414002-3 |
| | C | 58483-1 | .151 | HX4-1637 | 2.64 [0.104] | 2.16 [0.085] | 1.70 [0.067] | 4.54 [0.179] | △ | RG 174,188,316 (ALL DBL SHIELDED) | 414002-2 |
| | B | 58483-1 | .128 | HX4-1637 | 2.64 [0.104] | 2.16 [0.085] | 1.70 [0.067] | 3.86 [0.152] | △ | RG 174,188,316 | 414002-1 |

| POSITION LETTER | AMP DIE SET | HEX SIZE | DANIELS DIE SET |
|-----------------|---------------------------------|--------------|-----------------|
| | AMP PRO-CRIMPER FOR BRAID CRIMP | M 22520/5-01 | FOR BRAID CRIMP |

TOOLING INFORMATION

| DO NOT SCALE PRINT. UNLESS SPECIFIED DIMENSIONS IN MM (INCHES) TOLERANCES ON: | | DR | DATE | AMP | |
|---|---------------------------|-----------|---------|--|-----------|
| 2 PL C DEC ± 0.25 (.010) | 3 PL C DEC ± 0.130 (.005) | J. McLEOD | 11/8/90 | AMP Incorporated Harrisburg, PA 17105-3608 | |
| ANGLES ± 1° | | J. McLEOD | 11/9/90 | NAME | |
| MATERIAL | | K. HEILIG | 1/28/91 | PRODUCT SPEC | |
| SEE NOTES | | | | PLUG, RTANG CRIMP, HEX CRIMP, SMB | |
| FINISH | | | | SIZE | CAGE CODE |
| SEE NOTES | | | | C | 00779 |
| WEIGHT | | | | DRAWING NO | SHEET |
| | | | | 414002 | 1 OF 1 |

METRIC

CUSTOMER DRAWING