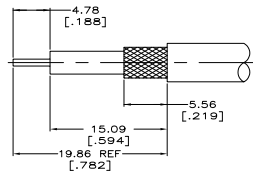
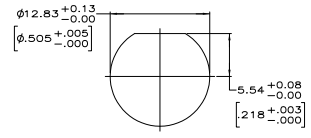


1. MAXIMUM PANEL THICKNESS = 6.10 [.240]
2. USE INSTRUCTION SHEET 408-1914-03



RECOMMENDED PANEL CUTOUT



RECOMMENDED PANEL CUTOUT

L	CABLE	WEIGHT	CRIMP TOOL	BUSHING QTY=1	JAM NUT QTY=1	LOCK WASHER QTY=1	GASKET QTY=1	FERRULE QTY=1	CONTACT QTY=1	JACK ASSEMBLY QTY=1	PART NUMBER
34.93	[1.375] RD-316 DOUBLE BRAIDED	-	69477-2	21427-4	1-329631-2	1-329632-2	329633	9-329049-0	1-331368-2	1-331786-6	1-5225398-5
34.93	[1.375] RG-179/U & 187/U CABLE	.557 OZ	220009-1	21427-4	1-329631-2	1-329632-2	329633	9-328666-0	1-331368-4	1-331786-6	5225398-8
34.93	[1.375] RG-174/U & 188/U	.582 OZ	220009-1	21427-4	1-329631-2	1-329632-2	329633	9-328666-0	1-331368-2	1-331786-6	5225398-7
38.10	[1.500] RG-142/U, 142A/U & 142B/U	-	220189-3	-	1-329631-2	1-329632-2	329633	9-225382-0	1-331369-7	1-331786-4	5225398-6
38.10	[1.500] RG55/U, 55A/U, 55B/U & 223/U	.568 OZ	69478-1	-	1-329631-2	1-329632-2	329633	9-225382-0	1-331369-6	1-331786-4	5225398-3
34.93	[1.375] RG-58/U, 58A/U, 58B/U & 58C/U	.582 OZ	69478-1	-	1-329631-2	1-329632-2	329633	9-50427-1	1-331369-6	1-331786-4	5225398-1

THIS DRAWING IS A CONTROLLED DOCUMENT.

APPROVED BY: [Signature]

DATE: 10/07/99

PROJECT: JACK, BULKHEAD, BNC

SIZE: A1

DATE: 10/07/99

REV: 0

QTY: 5225398