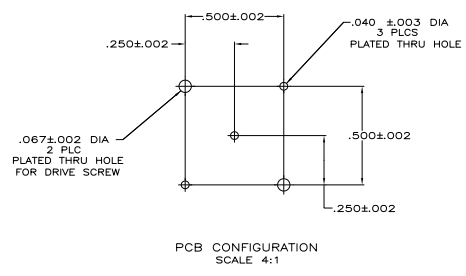
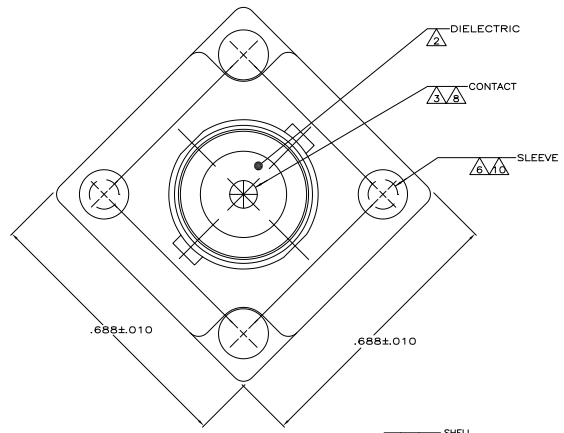
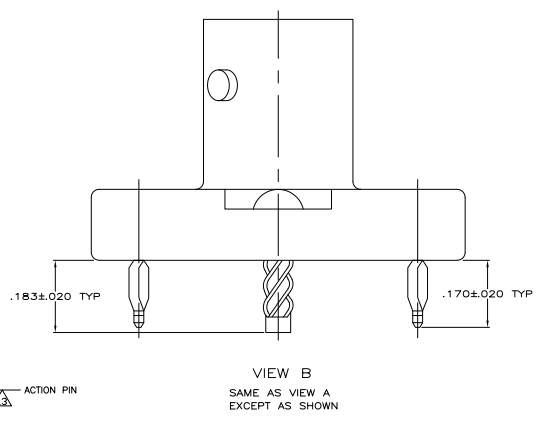
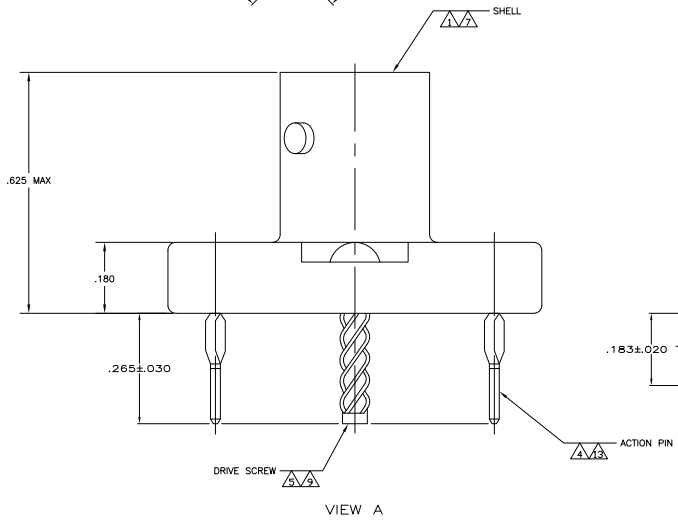


REV	DATE	DESCRIPTION	BY	CHK	APP
AJ	16				
A		REV PER ECO 08-003548			



- ▲ ZINC PER QQ-Z-363
- ▲ PTFE PER MIL-P-19468
- ▲ BERYLLIUM COPPER PER QQ-C-530
- ▲ COPPER NICKEL ALLOY PER ASTM-B-122
- ▲ STAINLESS STEEL PER ASTM-A-582
- ▲ BRASS PER QQ-B-626
- ▲ NICKEL PLATE PER QQ-N-290,  
 .000200 MINIMUM THICKNESS
- ▲ GOLD PLATE PER MIL-G-45204,  
 .000030 - .000055 MINIMUM THICKNESS
- ▲ PASSIVATE PER QQ-P-35
- ▲ TIN PLATE PER ASTM-B-545,  
 .000100 - .000200 MINIMUM THICKNESS
- ▲ PREPARE BOARD AND TERMINATE  
 PER APPLICATION SPEC 114-12001
- 1.2. SEE INSTRUCTION SHEET 408-9194.
- ▲ GOLD PLATE PER MIL-G-45204.



A	5221336-4
B	5221336-3
VIEW	PART NUMBER

THIS DRAWING IS A CONTROLLED DOCUMENT.		REV	DATE	DESCRIPTION	BY	CHK	APP
1	108-12103						
CUSTOMER DRAWING		REV	DATE	DESCRIPTION	BY	CHK	APP
A1	00779						