

4

3

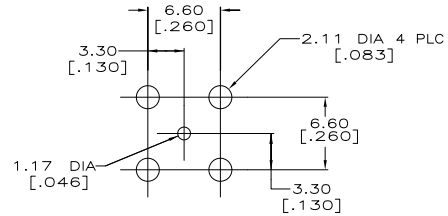
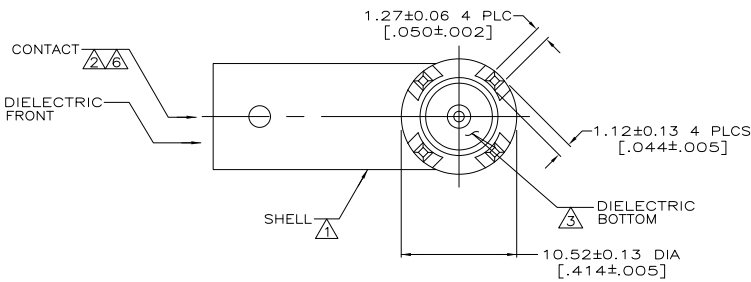
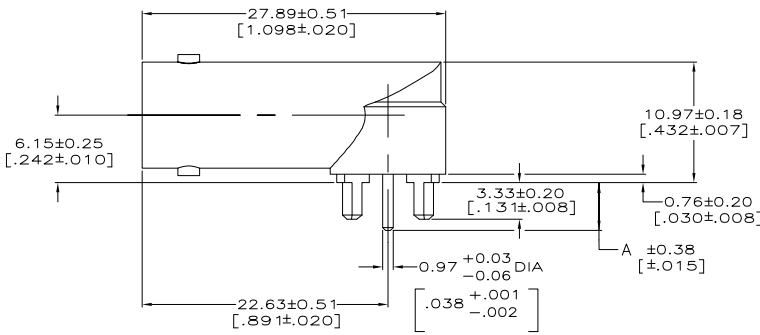
2

1

THIS DRAWING IS UNPUBLISHED. RELEASED FOR PUBLICATION  
 © COPYRIGHT BY TYCO ELECTRONICS CORPORATION. ALL RIGHTS RESERVED.

LOC	DIST	REVISIONS			
P	LTR	DESCRIPTION	DATE	BY	APPD
AJ	00	B2	REVISED PER EDD 07-015108	26JUN2007	DW FB

- 1 ZINC PER QQ-Z-363.
- 2 BERYLLIUM COPPER PER QQ-C-530.
- 3 PTFE PER MIL-P-19468.
- 4 NICKEL PLATE PER QQ-N-290, 3.81µm [.000150] MINIMUM THICK.
- 5 TIN PLATE PER ASTM-B-545, 3.04µm [.000120] MINIMUM THICK OVER NICKEL PLATE PER MIL-C-26074, 7.62µm [.000300] MINIMUM THICK.
- 6 GOLD PLATE PER MIL-G-45204, 1.27µm [.000050] MINIMUM THICK.
- 7 INTERFACE PER MIL-C-39012.
- 8 POLYMETHYLPENTENE, GENERAL PURPOSE



PCB CONFIGURATION

3.33 [.131]				5413631-5
3.33 [.131]				5413631-3
4.34 [.171]				5413631-2
4.34 [.171]				5413631-1
A	FINISH: SHELL	MATERIAL: DIELECTRIC, FRONT	PART NUMBER	

THIS DRAWING IS A CONTROLLED DOCUMENT.		DR: S.MCMASTER 03/AN/05	Tyco Electronics Corporation Harrisburg, PA 17105-3608	
DIMENSIONS: INCHES		CHK: J.LIPPERT 03/AN/05	APPC: J.LIPPERT 03/AN/05	
OTHER DIMENSIONS: MILLIMETERS		PRODUCT SPEC: APPLICATION SPEC: WEIGHT: FINISH: SEE NOTES 1-3		
MATERIAL: SEE NOTES 1-3		SIZE: A2 CASE CODE: 00779 DRAWING NO: C=5413631		RESTRICTED TO: -
FINISH: SEE NOTES 4-6		CUSTOMER DRAWING		SCALE: 4:1 SHEET: 1 of 1 REV: B2

AMP 1471-9 REV 31MM2000

5413631

A