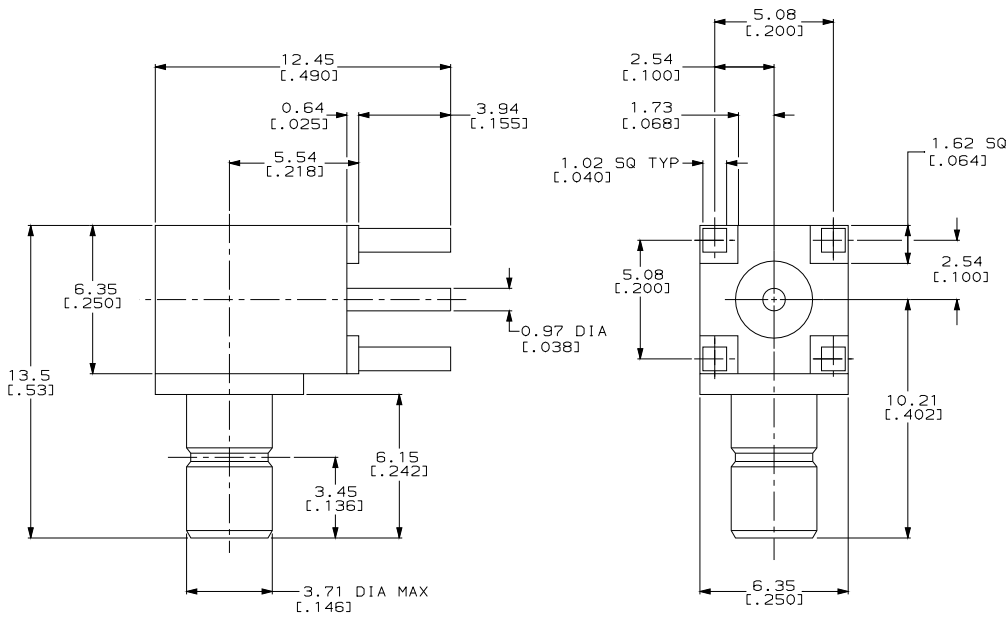


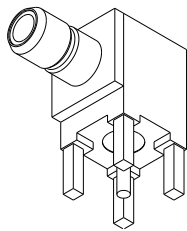
DRAWING MADE IN THIRD ANGLE PROJECTION  
 THIS DRAWING IS UNPUBLISHED. RELEASED FOR PUBLICATION, 19  
 © COPYRIGHT 19 BY AMP INCORPORATED. ALL INTERNATIONAL RIGHTS RESERVED.

LOC		DIST		ZONE		LTR		REVISIONS		DATE	APPD
AJ	16	P	F					D	REV PER EC 0514-0453-04	1700105	GM



- 1 MATERIALS:  
 BODY (LEG); ZINC ALLOY (ZAMAK 3)  
 BODY (FRONT); BRASS PER QQ-B-626  
 CENTER CONTACT; BRASS PER QQ-B-626  
 INSULATORS; TEFLON PER ASTM-D-1710
- 2 MATERIALS:  
 BODY (LEG); BRASS PER MIL-C-21768  
 BODY (FRONT); BRASS PER QQ-B-626  
 CENTER CONTACT; BRASS PER QQ-B-626  
 INSULATORS; TEFLON PER ASTM-D-1710
- 3 FINISH:  
 CENTER CONTACT; GOLD PL PER MIL-G-45204  
 BODY (LEG); NICKEL PL PER 112-25-1  
 BODY (FRONT); GOLD PL PER 112-162-5
- 4 FINISH:  
 CENTER CONTACT; GOLD PL PER MIL-G-45204  
 BODY (LEG); GOLD PL PER 112-162-5  
 BODY (FRONT); GOLD PL PER 112-162-5
- 5 FINISH:  
 CENTER CONTACT; GOLD PL PER MIL-G-45204  
 BODY (LEG); NICKEL PL PER 112-25-1  
 BODY (FRONT); NICKEL PL PER 112-25-1
- 6. INTERFACE PER MIL-C-39012
- 7 FINISH:  
 CENTER CONTACT; GOLD PL PER MIL-G-45204  
 BODY (LEG); TIN-LEAD PL PER ASTM-B-545  
 BODY (FRONT); GOLD PL PER 112-162-5
- 8 FINISH:  
 CENTER CONTACT; GOLD PL PER MIL-G-45204  
 BODY (LEG); TIN-LEAD PL PER ASTM-B-545  
 BODY (FRONT); NICKEL PL PER 112-25-1

SUPERSEDED BY 414337-1	414026-6
SUPERSEDED BY 414026-2	414026-5
OBSOLETE	414026-4
	414026-3
	414026-2
	414026-1
NOTES	PART NUMBER



ISOMETRIC VIEW

PART NO	
DO NOT SCALE PRINT. UNLESS SPECIFIED DIMENSIONS IN mm (INCHES) TOLERANCES ON: 2 PLC DEC ±.25 (.010) 3 PLC DEC ±.13 (.005) ANGLES ± -	DR 11-26-90 B. WERNER CHK 2-4-91 J. McLEOD APPD 2-4-91 J. McLEOD
MATERIAL	AMPD 2-4-91 B. WERNER
FINISH	PRODUCT SPEC
APPLICATION SPEC	NAME SMB, RIGHT ANGLE, JACK RECEPTACLE, PCB MOUNTING
WEIGHT	SIZE CAGE CODE DRAWING NO 00779 414026
	SCALE 8:1 SHEET 1 OF 1

CUSTOMER DRAWING