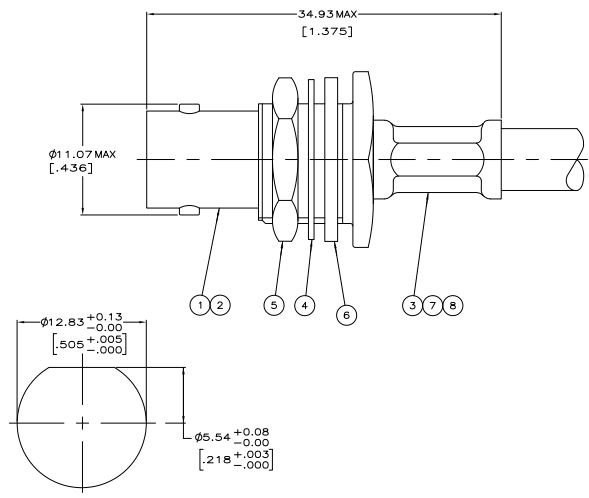
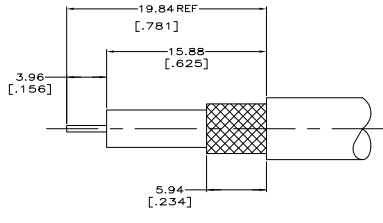


REV	DATE	DESCRIPTION	BY	APP
AJ	16	REVISED PER ECO-10-009938		



RECOMMENDED PANEL CUTOUT



RECOMMENDED STRIP LENGTH

- △ MAX PANEL THICKNESS .240.
- △ USE WITH PRO-CRIMPER 354940-1.
- 3. USE INSTRUCTION SHEET 408-9763.
- △ BULK KIT PACKAGE, 100 PER BAG.

CUSTOM CABLE	FERRULE (HEX) CONTACT (SQ) CRIMP HEIGHTS		DIE SET	⑧ TUBING, METAL, QTY=1	⑦ TUBING, PLASTIC, QTY=1	⑥ GASKET, QTY=1	⑤ JAM NUT, QTY=1	④ LOCKWASHER, QTY=1	③ FERRULE, QTY=1	② CONTACT, QTY=1	① JACK ASSY, QTY=1	PART NUMBER
AT&T 735A	4.52 (.178)	1.07 (.042)	58425-2	222001-6	227194-2	329633	1-329631-2	1-329632-2	9-413658-2	1-413746-0	413744-2	2-5413590-1
CUSTOM CABLE, C/C-24AWG, DDD-109, JOD-153	4.52 (.178)	1.07 (.042)	58425-2	-	-	329633	1-329631-2	1-329632-2	9-413658-2	1-413746-0	413744-2	1-5413590-8
RG-179/U & 187/U	4.52 (.178)	1.07 (.042)	58425-2	222001-6	227194-2	329633	1-329631-2	1-329632-2	9-413658-0	1-413746-5	413744-2	1-5413590-7
AT&T KS 19224 L2 AND JIS 1.5C-XV	4.52 (.178)	1.07 (.042)	58425-2	222001-6	227194-2	329633	1-329631-2	1-329632-2	9-413658-2	1-413746-5	413744-2	5413590-4
BELDEN 8218 AND JIS 2.5C-2V	4.52 (.178)	1.07 (.042)	58425-2	-	-	329633	1-329631-2	1-329632-2	9-221132-6	1-413746-0	413744-2	5413590-3

THIS DRAWING IS A CONTROLLED DOCUMENT.

INCHES	DECIMALS	FRACTIONS	OTHER
1/16	0.0005	1/32	1/64
1/32	0.0010	1/16	1/32
1/16	0.0020	1/8	1/16
3/32	0.0030	3/16	1/8
1/8	0.0040	1/4	3/16
3/16	0.0050	1/2	1/4
1/4	0.0060	3/4	1/2
5/16	0.0070	1	3/4
3/8	0.0080		1
1/2	0.0090		
5/8	0.0100		
3/4	0.0110		
7/8	0.0120		
1	0.0130		
1 1/8	0.0140		
1 1/4	0.0150		
1 3/8	0.0160		
1 1/2	0.0170		
1 5/8	0.0180		
1 3/4	0.0190		
1 7/8	0.0200		
2	0.0210		
2 1/8	0.0220		
2 1/4	0.0230		
2 3/8	0.0240		
2 1/2	0.0250		
2 5/8	0.0260		
2 3/4	0.0270		
2 7/8	0.0280		
3	0.0290		
3 1/8	0.0300		
3 1/4	0.0310		
3 3/8	0.0320		
3 1/2	0.0330		
3 5/8	0.0340		
3 3/4	0.0350		
3 7/8	0.0360		
4	0.0370		
4 1/8	0.0380		
4 1/4	0.0390		
4 3/8	0.0400		
4 1/2	0.0410		
4 5/8	0.0420		
4 3/4	0.0430		
4 7/8	0.0440		
5	0.0450		
5 1/8	0.0460		
5 1/4	0.0470		
5 3/8	0.0480		
5 1/2	0.0490		
5 5/8	0.0500		
5 3/4	0.0510		
5 7/8	0.0520		
6	0.0530		
6 1/8	0.0540		
6 1/4	0.0550		
6 3/8	0.0560		
6 1/2	0.0570		
6 5/8	0.0580		
6 3/4	0.0590		
6 7/8	0.0600		
7	0.0610		
7 1/8	0.0620		
7 1/4	0.0630		
7 3/8	0.0640		
7 1/2	0.0650		
7 5/8	0.0660		
7 3/4	0.0670		
7 7/8	0.0680		
8	0.0690		
8 1/8	0.0700		
8 1/4	0.0710		
8 3/8	0.0720		
8 1/2	0.0730		
8 5/8	0.0740		
8 3/4	0.0750		
8 7/8	0.0760		
9	0.0770		
9 1/8	0.0780		
9 1/4	0.0790		
9 3/8	0.0800		
9 1/2	0.0810		
9 5/8	0.0820		
9 3/4	0.0830		
9 7/8	0.0840		
10	0.0850		

DATE: 10/10/08
 DRAWN BY: [Signature]
 CHECKED BY: [Signature]
 APPROVED BY: [Signature]