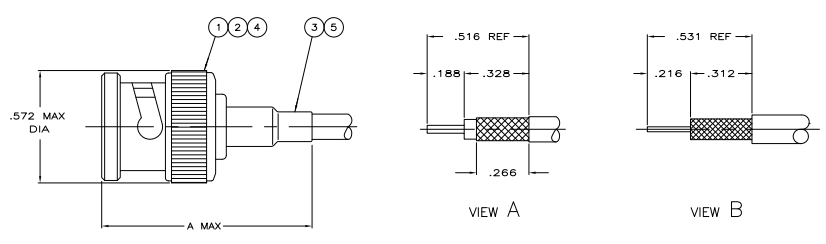


REV	DATE	DESCRIPTION	BY	CHK	APP
AJ	17	REVISED PER ECD-11-005030			



RECOMMENDED STRIP LENGTH

- △ CABLE USED WITHOUT SPACER
- △ CABLE USED WITH SPACER
- 3. SEE INSTRUCTION SHEET 408-2798
- 4. PARTS PACKAGED UNASSEMBLED
- △ USE WITH HAND TOOL FRAME 354940-1
- △ USE WITH HANDTOOL 69710-1, OR PNEUMATIC TOOL 69365 & 69365-3
- △ OBSOLETE PARTS: OBSOLETE CIS STREAMLINING PER D.RENAUD/D.SINISI

CABLE SIZE	DIE SET	DIE SET	CRIMP TOOL	VIEW	A	⑤	TUBING QTY=1	④	SPACER QTY=1	③	FERRULE QTY=1	②	CONTACT QTY=1	①	PLUG ASSY QTY=1	PART NUMBER
RG-174/U & 188/U	220217-3	220210-1	220009-5	A	1.090	227194-1	-	9-328666-4	227322-8	9-227074-1	8-5227079-3					
RG-188 DOUBLE BRAID AND RG-316 DOUBLE BRAID	-	58330-1	69477-4	A	-	227194-1	-	9-329049-0	227322-8	9-413530-3	8-5227079-2					
RG-59/U,59A/U AND 59B/U	220217-2	220189-2	220187-2	A	1.090	-	227423-1	9-50428-0	221607-6	9-413530-0	8-5227079-1					
RG-62/U,62A/U AND 62B/U	220217-1	220189-1	220187-1	A	1.090	-	-	9-50427-1	221607-5	9-227074-0	8-5227079-0					
RG-58/U,58A/U,58B/U,58C/U AND 141/U	220217-1	220189-1	220187-1	A	1.312	-	-	9-228783-0	221607-5	9-227074-0	7-5227079-6					
△ OBSOLETE BELDEN 88240 AND BERK-TEK BTDC-58	220217-2	220189-2	220187-2	B	1.090	-	227423-1	9-50428-0	9-221607-6	9-413530-0	7-5227079-2					
RG-62/U,62A/U AND 62B/U	-	318452-2	-	A	1.312	-	-	9-228783-0	1-221607-6	9-227074-0	6-5227079-8					
BELDEN 8907	220217-1	220189-1	220187-1	A	1.090	-	-	9-50427-1	1-221607-6	9-227074-0	6-5227079-7					
BELDEN 9907 AND RG-141A/U	-	220043-1	-	A	1.490	-	-	9-51713-3	1-221607-6	9-413530-1	6-5227079-5					
BELDEN 9290	220217-1	220189-1	220187-1	A	1.090	-	-	9-50427-1	1-221607-6	9-227074-0	6-5227079-4					
△ OBSOLETE BELDEN 9907	220217-1	220189-1	220187-1	A	1.280	-	-	9-225382-0	1-221607-6	9-227074-0	6-5227079-1					
RG-142/U,142A/U AND 142B/U	220217-1	220189-1	220187-1	A	1.312	-	-	9-228784-0	221607-5	9-413530-0	6-5227079-3					
△ OBSOLETE HI TEMP RG-59/U,TIMES PLS9 AND PLF59	220217-1	318452-2	-	A	1.312	-	-	9-228783-0	221607-5	9-227074-0	4-5227079-3					
BELDEN 88240 AND BERK-TEK BTDC-58	220217-3	220210-1	220009-5	A	1.090	227194-1	-	9-328666-0	227322-4	9-227074-1	2-5227079-2					
RG-179/U & 187/U	220217-3	220210-1	220009-5	A	1.090	227194-1	-	9-328666-0	9-227322-1	9-413530-3	2-5227079-0					
RG-179/U & 187/U	220217-3	220210-1	220009-5	A	1.090	227194-1	-	9-328666-0	2-221607-2	9-413530-2	1-5227079-9					
BELDEN 8218,AMPHENOL 21-597 & BELDEN NH SPECIAL	-	58330-1	69477-4	A	1.090	-	-	9-329461-0	2-221607-2	9-413530-2	1-5227079-9					
RG-174/U & 188/U	220217-3	220210-1	220009-5	A	1.090	227194-1	-	9-328666-0	227322-8	9-227074-1	1-5227079-6					
△ RG-59/U,59A/U & 59B/U	220217-2	220189-2	220187-2	A	1.090	-	227423-1	9-50428-0	9-221607-6	9-413530-0	1-5227079-1					
△ RG-62/U,62A/U & 62B/U	220217-1	220189-1	220187-1	B	1.090	-	-	9-50427-1	9-221607-5	9-227074-0	5227079-9					
△ RG-59/U,59A/U,59B/U,59C/U & 141/U	220217-2	220189-2	220187-2	A	1.090	-	227423-1	9-50428-0	221607-6	9-227074-2	5227079-7					
△ RG-62/U,62A/U & 62B/U	220217-1	220189-1	220187-1	B	1.090	-	-	9-50427-1	221607-5	9-227074-0	5227079-6					
RG-55/U,55A/U,55B/U, & 223/U	220217-1	220189-1	220187-1	A	1.280	-	-	9-225382-0	221607-5	9-227074-0	5227079-6					
RG-58/U,58A/U,58B/U,58C/U & 141/U	220217-1	220189-1	220187-1	A	1.090	-	-	9-50427-1	221607-5	9-227074-0	5227079-5					

THIS DRAWING IS A CONTROLLED DOCUMENT

TE Connectivity
 PLUG, COMMERCIAL, BNC

DATE: 108-12044
 DRAWING NO: 100779
 REV: 4.1