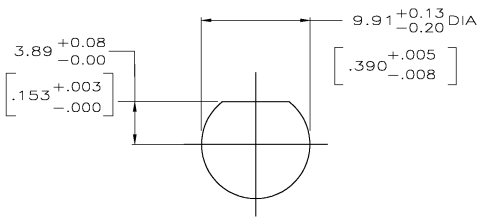
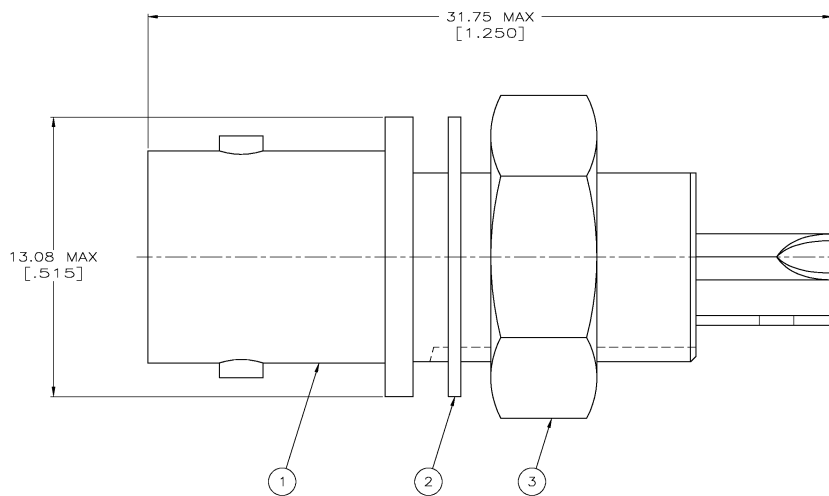


THIS DRAWING IS UNPUBLISHED. RELEASED FOR PUBLICATION
 © COPYRIGHT BY TYCO ELECTRONICS CORPORATION. ALL RIGHTS RESERVED.

LOC	DIST	REVISIONS			
P	LTR	DESCRIPTION	DATE	BY	APPD
AJ	16	E	EC PER DS14-0192-04	12NOV2004	JGH/JL

1. FOR USE IN PANELS UP TO .250 MAXIMUM THICK.



SUGGESTED PANEL CUTOUT
SCALE 4:1

9-414815-0	1-329492-1	227529-3	227726-3
9-414815-0	1-329492-1	227529-2	227726-2
9-414815-0	1-329492-1	227529-1	227726-1
③ JAM NUT QTY=1	② LOCKWASHER QTY=1	① JACK ASSY QTY=1	PART NUMBER

THIS DRAWING IS A CONTROLLED DOCUMENT.		DW J. LIPPERT 3-12-94 CK D. TAYLOR 3-18-94 D. TAYLOR PRODUCT SPEC 3-18-94	Tyco Electronics Tyco Electronics Corporation Harrisburg, PA 17105-3608
DIMENSIONS: INCHES 0 PLG ± 1 PLG ± 2 PLG ± 3 PLG ± 4 PLG ± ANGLES ±	FINISH -	APPLICATION SPEC -	SOLDER JACK, ISOLATED, 50 OHM, BNC
MATERIAL	WEIGHT: 290 OZ EACH	SIZE CASE CODE DRAWING NO A2 00779 C-227726	RESTRICTED TO
CUSTOMER DRAWING		SCALE: 8:1	SHEET 1 OF 1 REV E