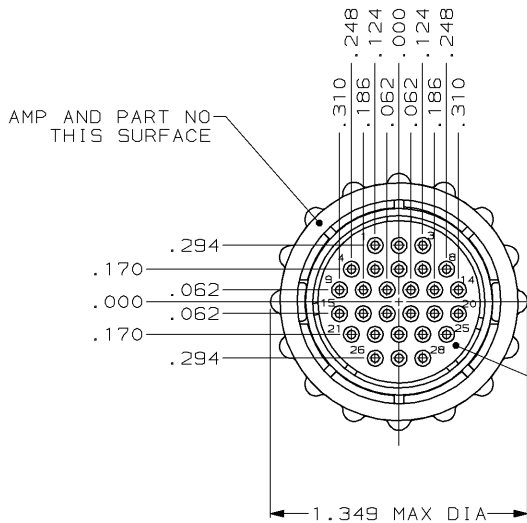


DRAWING MADE IN THIRD ANGLE PROJECTION

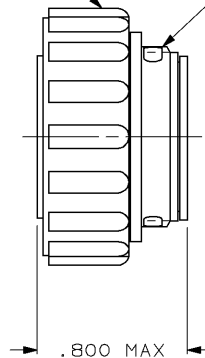
THIS DRAWING IS UNPUBLISHED. RELEASED FOR PUBLICATION, 19
 © COPYRIGHT 19 BY AMP INCORPORATED. ALL INTERNATIONAL RIGHTS RESERVED.

LOC	DIST	ZONE	LTR	REVISIONS	DATE	APPD
FT	4			E REDRAWN	4/1/91	-
				F REV PER EC 0020-568-95	19 JUL 95	AF
				G REV PER EC 0320-244-97	06 OCT 97	KD



POLYESTER, BLACK

GLASS FILLED NYLON, 6/6, BLACK



206126-1
 PART NUMBER

- CONTACT CAVITIES IDENTIFIED BY CHARACTERS ON FRONT AND REAR FACES OF CONNECTOR.
- WILL ACCEPT (28) SIZE 20 SOCKET CONTACTS.

DO NOT SCALE PRINT. UNLESS SPECIFIED DIMENSIONS IN INCHES TOLERANCES ON: 1. ALL DIMS ± .005 2. PLC DEC ± .005 3. ANGLES ± .5°		DR 4/1/91 A. STAUB BS CHK 7-23-92 M.G. LENKER APPD 7-23-92 K. BEAVER APPD 7-23-92 C. RONDÉ	AMP AMP Incorporated Harrisburg, PA 17105-3608	
MATERIAL SEE CALLOUTS	PRODUCT SPEC 108-10024	NAME PLUG ASSEMBLY, FEED-THRU, SERIES 2, 17-28, CPC		
FINISH -	APPLICATION SPEC -	SIZE B	CAGE CODE 00779	DRAWING NO 206126
WEIGHT -		SCALE 2:1	SHEET 1 OF 1	

AMP 1470-15 REV 11-89 06-OCT-97 10:15:08 amp40973 /home/ssrv026d/dsk04/dept4023/amp40973/edmod

CUSTOMER DRAWING