

4

3

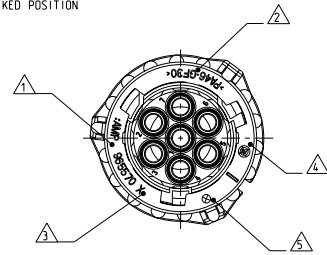
2

1

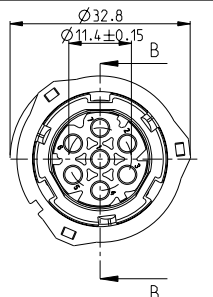
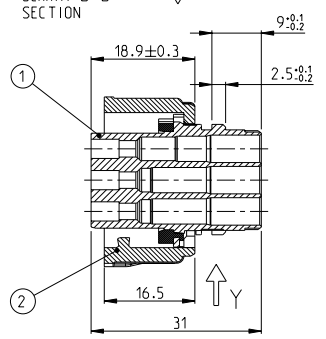
THIS DRAWING IS UNCLASSIFIED
 RELEASED FOR PUBLICATION
 UNLESS INDICATED OTHERWISE
 BY TYCO ELECTRONICS CORPORATION. ALL RIGHTS RESERVED.
 COPYRIGHT 1996

- NOTES**
 Bemerkungen
- 1 AMP oder Tyco Electronics (TE) Logo und TE Einzelteilnummer AMP OR Tyco Electronics (TE) LOGO AND TE SINGLE PART NUMBER
 - 2 Werkstoffkennzeichnung MATERIAL MARKING
 - 3 Werkzeugaenderungsindex REVISION OF THE MOULD
 - 4 Produktionsdatum PRODUCTION DATE
 - 5 Nestmarkierung CAVITY MARKING
- 6 Passend zu Geräteanschluss 7pol. nach TE-Zeichnung 14-18060-011 und Stiftgehäuse 7pol. TE-PIN 1718230
 FITS TO COMPONENT INTERFACE 7POS. ACC. TO TE-DRAWING 14-18060-011 AND PIN-HOUSING 7POS. TE-PIN 1718230
- 7 Zu verwendende Kontakte und Einzelzeichnungen siehe Tabellenezeichnungen:
 FOR SUITABLE CONTACTS AND SEALS SEE DRAWINGS.
- TE 1355063

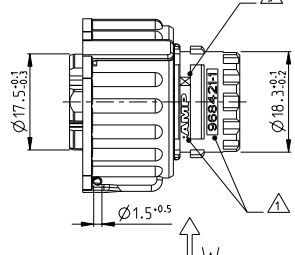
Kupplungsring in Vorraststellung
 COUPLING-RING IN PRE-LOCKED POSITION



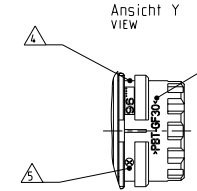
Schnitt B-B
 SECTION



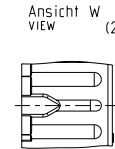
Ansicht X
 VIEW



Ansicht Y
 VIEW

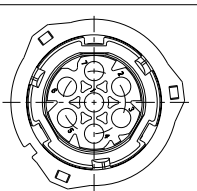


Ansicht W
 VIEW (2x)

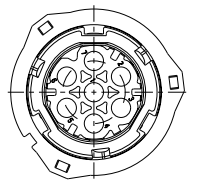


FURTHER CODINGS:
 weitere Kodierungen

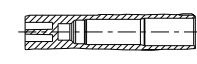
CODING C
 Kodierung



CODING B
 Kodierung



Verschlossene Kammer in der 5pol. bzw. 6pol. Variante
 CLOSED CAVITY IN THE 5POS. AND 6POS. CONNECTOR



Bestell-Nr. (ORDER-NO.)	REV.	Material (MATERIAL)	POS.	Stück QTY	DESCRIPTION SINCE PART	Werkstoff (MATERIAL)	Oberflächendefinition (SURFACE COLOR)
3-967650-1	F	PA46-GF30	2	1	Kupplungsring (COUPLING RING)	BLACK/schwarz	
2-967650-1	F	PBT-GF30/Silicone	1	1	7pol. Bu.geh. m. Dichtung Kodierung C (7POS. HSG. W. SEALING CODE C)	GRÜNgelb/Orange	
			1	1	Kupplungsring (COUPLING RING)	BLACK/schwarz	
1-967650-1	F	PBT-GF30/Silicone	2	1	7pol. Bu.geh. m. Dichtung Kodierung B (7POS. HSG. W. SEALING CODE B)	GRÜTgrau/Orange	
			1	1	Kupplungsring (COUPLING RING)	BLACK/schwarz	
967650-4	F	PBT-GF30/Silicone	2	1	6pol. Bu.geh. m. Dichtung Kodierung A (6POS. HSG. W. SEALING CODE A)	BLAUgrau/Orange	
			1	1	Kupplungsring (COUPLING RING)	BLACK/schwarz	
967650-3	F	PBT-GF30/Silicone	2	1	6pol. Bu.geh. m. Dichtung Kodierung A (6POS. HSG. W. SEALING CODE A)	BLACK/schwarz	
			1	1	Kupplungsring (COUPLING RING)	BLACK/schwarz	
967650-2	F	PBT-GF30/Silicone	2	1	6pol. Bu.geh. m. Dichtung Kodierung A (6POS. HSG. W. SEALING CODE A)	BLACK/schwarz	
			1	1	Kupplungsring (COUPLING RING)	BLACK/schwarz	
967650-1	F	PBT-GF30/Silicone	2	1	6pol. Bu.geh. m. Dichtung Kodierung A (6POS. HSG. W. SEALING CODE A)	BLACK/schwarz	
			1	1	Kupplungsring (COUPLING RING)	BLACK/schwarz	

<p>1:1 DRAWING IS CONTROLLED DOCUMENT. IT IS UNCLASSIFIED UNLESS INDICATED OTHERWISE BY TYCO ELECTRONICS CORPORATION. ALL RIGHTS RESERVED. THIS DRAWING IS UNCLASSIFIED UNLESS INDICATED OTHERWISE BY TYCO ELECTRONICS CORPORATION.</p> <p>DATE: 07MAR1996 CDR: Gradzow CHK: Hagg APPRO: JOMAY1996</p>	<p>DATE: 07MAR1996 NAME: JOMAY2010 DRAWING NO: 14-18622-0 PROJECT SPEC: 14-18622-0</p>	<p>DATE: 07MAR2010 NAME: JOMAY2010 DRAWING NO: 14-18622-0 PROJECT SPEC: 14-18622-0</p>	<p>DATE: 07MAR2010 NAME: JOMAY2010 DRAWING NO: 14-18622-0 PROJECT SPEC: 14-18622-0</p>	<p>DATE: 07MAR2010 NAME: JOMAY2010 DRAWING NO: 14-18622-0 PROJECT SPEC: 14-18622-0</p>
<p>TO GRABES (ONLY): ALLEN/STROEMER DIMENSIONS: MASS/METRIC mm</p>	<p>TO GRABES (ONLY): ALLEN/STROEMER DIMENSIONS: MASS/METRIC mm</p>	<p>TO GRABES (ONLY): ALLEN/STROEMER DIMENSIONS: MASS/METRIC mm</p>	<p>TO GRABES (ONLY): ALLEN/STROEMER DIMENSIONS: MASS/METRIC mm</p>	<p>TO GRABES (ONLY): ALLEN/STROEMER DIMENSIONS: MASS/METRIC mm</p>
<p>MATERIAL: SEE TABLE siehe Tabelle</p>	<p>MATERIAL: SEE TABLE siehe Tabelle</p>	<p>MATERIAL: SEE TABLE siehe Tabelle</p>	<p>MATERIAL: SEE TABLE siehe Tabelle</p>	<p>MATERIAL: SEE TABLE siehe Tabelle</p>
<p>DATE: 07MAR1996 CDR: Gradzow CHK: Hagg APPRO: JOMAY1996</p>	<p>DATE: 07MAR2010 NAME: JOMAY2010 DRAWING NO: 14-18622-0 PROJECT SPEC: 14-18622-0</p>	<p>DATE: 07MAR2010 NAME: JOMAY2010 DRAWING NO: 14-18622-0 PROJECT SPEC: 14-18622-0</p>	<p>DATE: 07MAR2010 NAME: JOMAY2010 DRAWING NO: 14-18622-0 PROJECT SPEC: 14-18622-0</p>	<p>DATE: 07MAR2010 NAME: JOMAY2010 DRAWING NO: 14-18622-0 PROJECT SPEC: 14-18622-0</p>