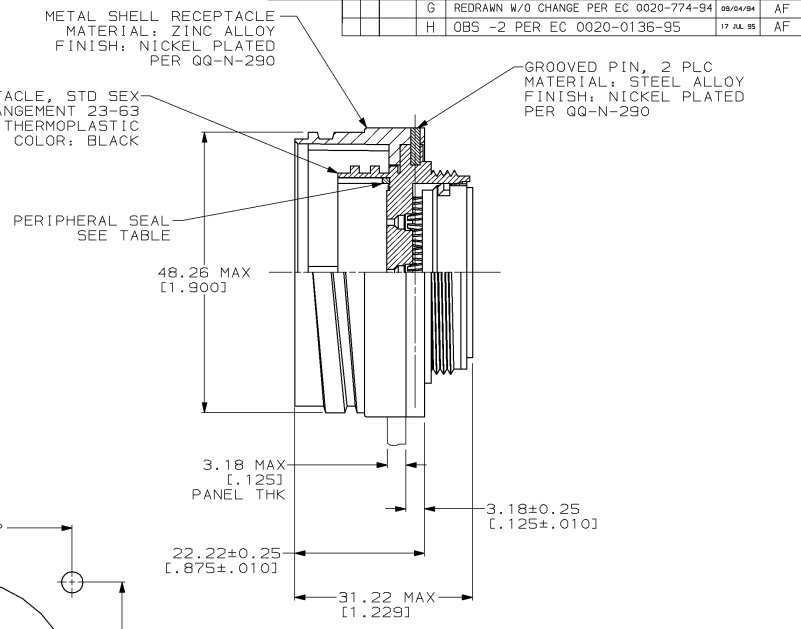
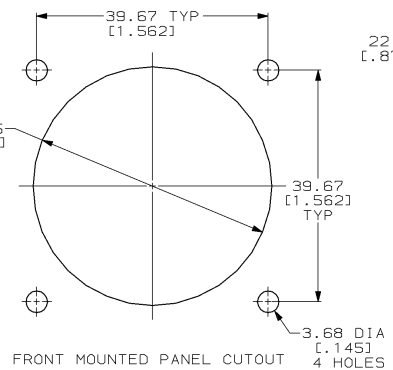
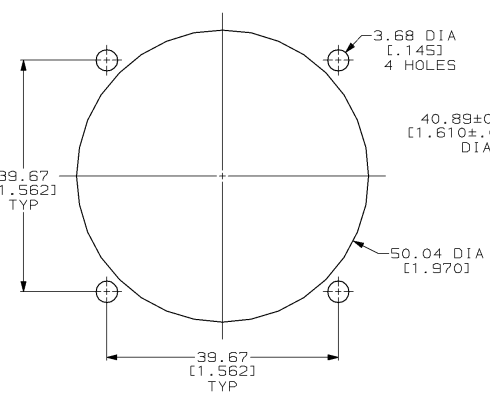
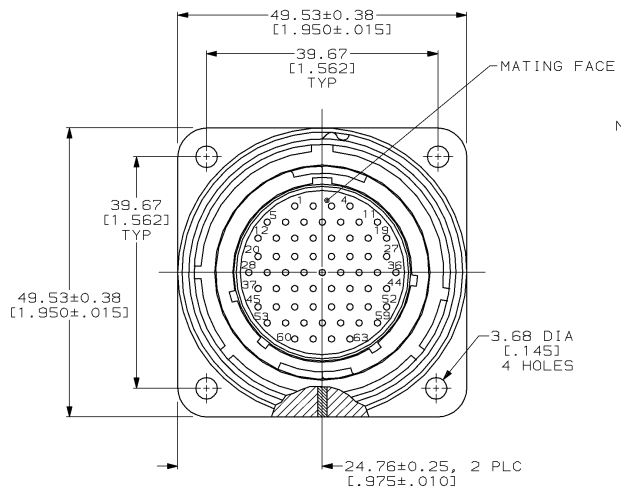


THIS DRAWING IS UNPUBLISHED. RELEASED FOR PUBLICATION, 19  
 © COPYRIGHT 19 BY AMP INCORPORATED. ALL INTERNATIONAL RIGHTS RESERVED.

LOC	DIST	P	F	ZONE	LTR	REVISIONS	DATE	APPD
BD	35					G REDRAWN W/O CHANGE PER EC 0020-774-94	08/24/94	AF
						H OBS -2 PER EC 0020-0136-95	17 JUL 95	AF



OBSOLETE	YES	208477-2
	NO	208477-1
PERIPHERAL SEAL		PART NUMBER

- RECEPTACLE MATES WITH AMP PLUG 208476-1.
- AMP PART NUMBER AND DATE CODE TO BE LOCATED ON EDGE OF FLANGE.

THIS DRAWING IS A CONTROLLED DOCUMENT FOR AMP INCORPORATED. IT IS SUBJECT TO CHANGE AND THE CONTROLLING ENGINEERING ORGANIZATION SHOULD BE CONTACTED FOR THE LATEST REVISION.

DO NOT SCALE PRINT. UNLESS SPECIFIED DIMENSIONS IN mm [INCHES] TOLERANCES ON: 2 PLC DEC ±0.13 [1.005] 3 PLC DEC ± ANGLES ± -	DR 09-04-94 D.HARDY	AMP Incorporated Harrisburg, PA 17105-3608	
MATERIAL SEE CALL OUT	CHK 09-07-94 R.STONE		
FINISH SEE CALL OUT	APPD 09-30-94 A.FRANTUM	SIZE C 00779	DRAWING NO C-208477
	PRODUCT SPEC -	SCALE 2:1	SHEET 1 OF 1
	APPLICATION SPEC -	CUSTOMER DRAWING	
	WEIGHT -		

208477

A