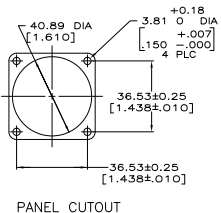
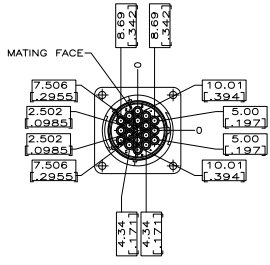
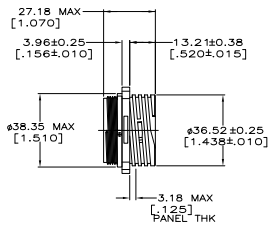
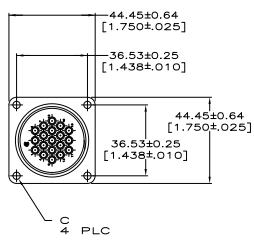
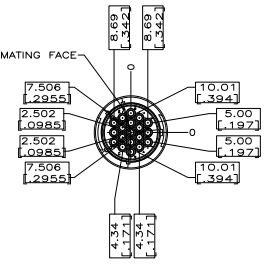
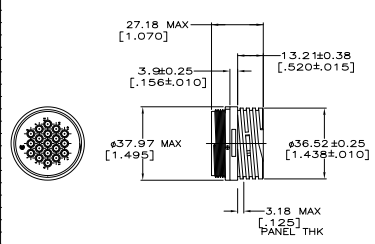


NOTES:

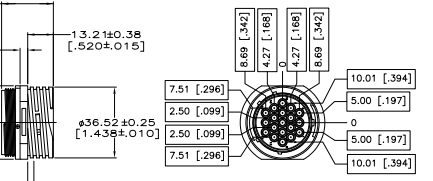
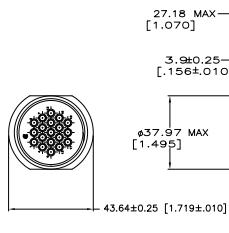
- WILL ACCEPT (19) MULTIMATE SOCKET CONTACTS.
- CONTACT CAVITIES IDENTIFIED BY CHARACTERS ON FRONT AND REAR FACES OF CONNECTOR.
- 3.81[.150] MAX INSULATION DIAMETER.
- 2.54[.100] MAX INSULATION DIAMETER.
- PRELIMINARY PART NUMBER.



211773-1, 211773-2 & 211773-6



211773-4



211773-5

4-40 THREADED INSERTS	YES	NORMAL	211773-6
	NO	FREE HANGING	211773-5
	NO	FREE HANGING	211773-4
3.81 [.150]	NO	NORMAL	211773-2
3.81 [.150]	NO	NORMAL	211773-1
C		PERIPHERAL SEAL	KEYING PART NUMBER

THIS DRAWING IS A CONTROLLED DOCUMENT.		REVISED	DATE	BY	APP
DESIGNED	APPROVED	DATE	BY	APP	
MATERIAL: MILON, BLACK		REVISED	DATE	BY	APP
CUSTOMER DRAWING		REVISED	DATE	BY	APP

TE Connectivity
 RECEPTACLE HOUSING, REVERSE SEX, SERIES I, SHELL SIZE 23, CPC
 SIZE: 00779 (Q)=211773
 SHEET 1 OF 1