

4

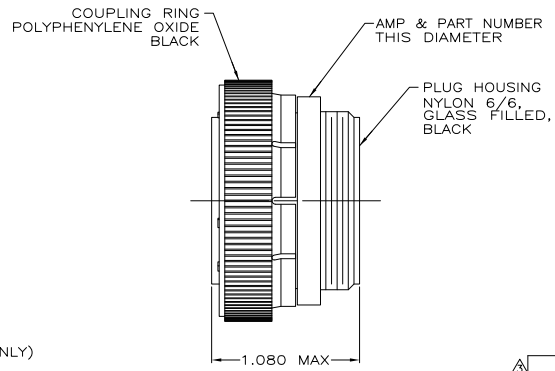
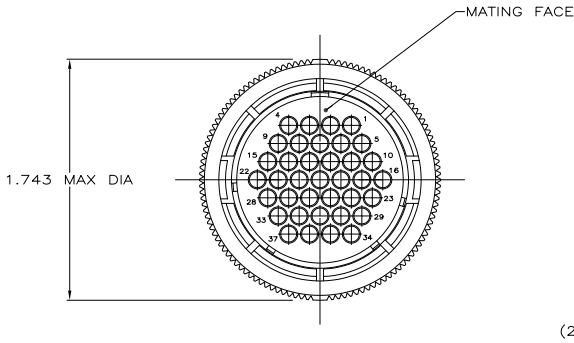
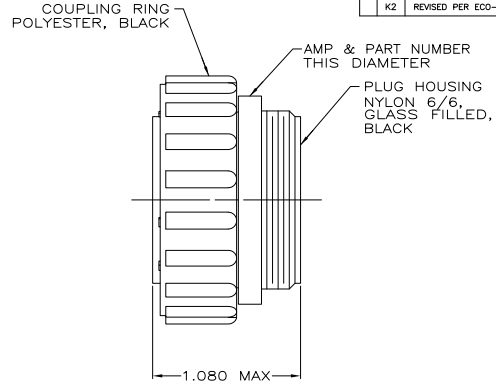
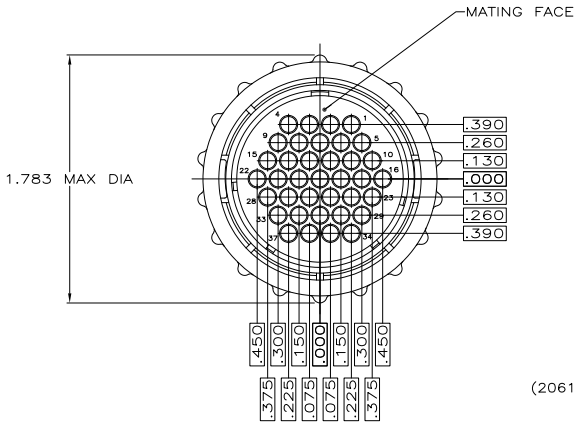
3

2

1

THIS DRAWING IS UNPUBLISHED. RELEASED FOR PUBLICATION  
 © COPYRIGHT - By - ALL RIGHTS RESERVED.

LOC		DIST		REVISIONS			
P	LR	DESCRIPTION	DATE	BY	APPD		
FT	0						
	K2	REVISED PER ECO-11-004587	11MAR11	RK	HMR		



- CONTACT CAVITIES IDENTIFIED BY CHARACTERS ON FRONT AND REAR FACES OF CONNECTOR.
  - THIS CONNECTOR WILL ACCEPT (37) MULTIMATE SOCKET CONTACTS.
- ⚠ WHITE DOT NEAR POSITION 1 ON WIRE ENTRY FACE.

STANDARD	206150-6
STANDARD	206150-3
SMALL PACK	206150-2
STANDARD	206150-1
PACKAGING	PART NUMBER

THIS DRAWING IS A CONTROLLED DOCUMENT.

DR: S. BRIDGLEY	8/2/90	 TE Connectivity
OK: B. STONE	4-26-91	
APPD: -	-	
NAME: -	-	
DIMENSIONS: INCHES	TOLERANCES UNLESS OTHERWISE SPECIFIED:	PLUG ASSEMBLY, SHELL SIZE 23, STANDARD SEX, SERIES 1, CPC
0 PLG ± .005	1 PLG ± .005	
2 PLG ± .005	3 PLG ± .005	
4 PLG ± .005	ANGLES ± .005	
MATERIAL: SEE CALLOUT	FINISH: -	SIZE: A2 CASE CODE: 00779 DRAWING NO: C-206150
CUSTOMER DRAWING		RESTRICTED TO: -
SCALE: 2:1		SHEET: 1 of 1
		REV: K2

1471-9 (3/11)

206150

A