

4

3

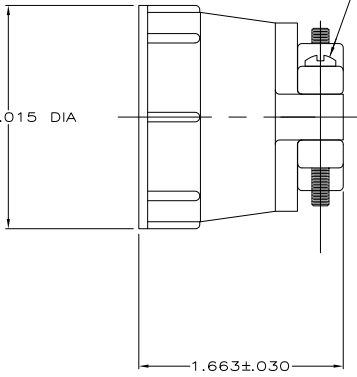
2

1

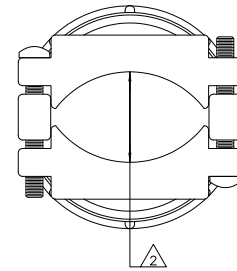
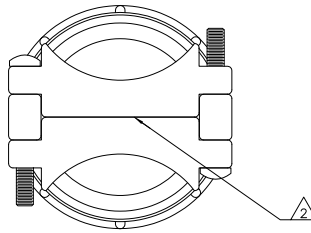
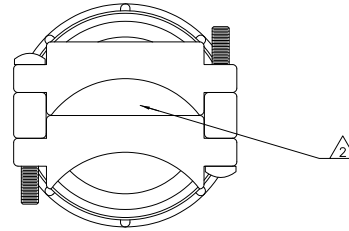
THIS DRAWING IS UNPUBLISHED. RELEASED FOR PUBLICATION  
 © COPYRIGHT - By - ALL RIGHTS RESERVED.

LOC	DIST	REVISIONS			
P	LR	DESCRIPTION	DATE	BY	APPD
BD	0				
	E1	REVISED PER ECO-11-004820	11MAR11	RK	HMR

1.600±.015 DIA



(2) #5-20 SELF-TAPPING SCREWS,  
 SOLID OR SLOTTED SHANK,  
 MATERIAL: ZINC PLATED STEEL  
 LENGTH: 1.00±.08



1 PARTS PACKAGED UNASSEMBLED.

2 CABLE CLAMPING AREA ADJUSTABLE FROM .000 TO .652 SQ IN, MAX CABLE DIA = 1.125 INCHES. TWO CLAMPING INSERTS SUPPLIED WITH ASSEMBLY, CLAMPING AREA DETERMINED BY POSITION OF INSERTS AS SHOWN AT RIGHT.

3 BULK PACKAGED KITS TO BE ORDERED IN MULTIPLES OF 250 ONLY.

4 SCREWS NON-HEXAVALENT CHROMATE COATED.

3	BULK	207774-4
4	INDIVIDUAL	207774-3
3	BULK	207774-2
4	INDIVIDUAL	207774-1

PACKAGING PART NUMBER

DIMENSIONS:		DRAWN BY:		DATE:		TE Connectivity	
INCHES		A. STAUB, BG		4-3-91		TE Connectivity	
OTHER FINISHES:		W. G. LENKER		7-22-92		CABLE CLAMP KIT, SELF CENTERING, SHELL SIZE 23, CPC	
0 PLC		NAME		PRODUCT SPEC		SIZE CASE CODE DRAWING NO	
1 PLC		108-10024		APPLICATION SPEC		A2 00779 C-207774	
2 PLC		WEIGHT		FINISH		RESTRICTED TO	
3 PLC		CUSTOMER DRAWING		SCALE		1 of 1	
4. P.C. ANGLES		SCALE 2:1		SHEET		REV E1	

1471-9 (3/11)

207774

A